

À des fins de recherche uniquement

# Anticorps Polyclonal de lapin anti-NOTCH3



Numéro de catalogue: 30540-1-AP

## Informations de base

<b>Numéro de catalogue:</b> 30540-1-AP	<b>Numéro d'acquisition GenBank:</b> NM_000435	<b>Méthode de purification:</b> Purification par affinité contre l'antigène
<b>Taille:</b> 150ul , Concentration: 650 µg/ml by Nanodrop;	<b>Identification du gène (NCBI):</b> 4854	<b>Dilutions recommandées:</b> WB 1:500-1:2000
<b>Hôte:</b> Lapin	<b>Nom complet:</b> Notch homolog 3 (Drosophila)	
<b>Isotype:</b> IgG	<b>MW calculé:</b> 244 kDa	
<b>Immunogen Catalog Number:</b> AG30242	<b>MW observés:</b> 270 kDa, 90 kDa	

## Applications

<b>Applications testées:</b> WB, ELISA	<b>Contrôles positifs:</b> WB : cellules Caco-2, cellules HeLa, cellules U2OS, tissu pulmonaire de souris
<b>Spécificité de l'espèce:</b> Humain, souris	

## Informations générales

NOTCH3 (Neurogenic locus notch homolog protein 3) is one of four mammalian Notch proteins, which act as signalling receptors to control cell fate in many developmental and adult tissue contexts (PMID: 32210034). Notch is a transmembrane, developmental signalling receptor, which plays many crucial roles in developmental patterning, cell fate decisions, regulation of cell survival and proliferation (PMID:30246579). Genetic studies have shown that Notch3 gene knockouts are viable and have limited developmental defects, focussed mostly on defects in the arterial smooth muscle cell lineage. Notch3, in collaboration with other Notch proteins, is involved in stem cell regulation in different tissues in stem cell regulation in different tissues, and it also controls the plasticity of the vascular smooth muscle phenotype involved in arterial vessel remodelling. Overexpression, gene amplification and mis-activation of Notch3 are associated with different cancers, in particular triple negative breast cancer and ovarian cancer (PMID: 32210034).

## Stockage

**Stockage:**  
Stocker à -20°C. Stable pendant un an après l'expédition.  
**Tampon de stockage:**  
PBS avec azoture de sodium à 0,02 % et glycérol à 50 % pH 7,3  
L'aliquotage n'est pas nécessaire pour le stockage à -20C

\*\*\* Les 20ul contiennent 0,1% de BSA.

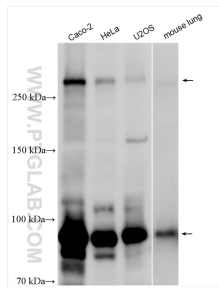
For technical support and original validation data for this product please contact:

T: 1 (888) 4PTGLAB (1-888-478-4522) (toll free in USA), or 1(312) 455-8498 (outside USA)

E: [proteintech@ptglab.com](mailto:proteintech@ptglab.com)  
W: [ptglab.com](http://ptglab.com)

This product is exclusively available under Proteintech Group brand and is not available to purchase from any other manufacturer.

## Données de validation sélectionnées



Various lysates were subjected to SDS PAGE followed by western blot with 30540-1-AP (NOTCH3 antibody) at dilution of 1:1000 incubated at room temperature for 1.5 hours.