

À des fins de recherche uniquement

Anticorps Polyclonal de lapin anti-EXOSC6



Numéro de catalogue: 30685-1-AP

Informations de base

Numéro de catalogue:	30685-1-AP	Numéro d'acquisition GenBank:	NM_058219	Méthode de purification:	Purification par affinité contre l'antigène
Taille:	150ul , Concentration: 400 µg/ml by Nanodrop;	Identification du gène (NCBI):	118460	Dilutions recommandées:	WB 1:500-1:3000
Hôte:	Lapin	Nom complet:	exosome component 6		
Isotype:	IgG	MW calculé	28kd		
Immunogen Catalog Number:	AG33513	MW observés:	28-32 kDa		

Applications

Applications testées:
WB, ELISA
Spécificité de l'espèce:
Humain

Contrôles positifs:

WB : cellules HaCaT, cellules HeLa, cellules HepG2, cellules Jurkat, cellules K-562, cellules MCF-7

Informations générales

EXOSC6 (exosome component 6), also known as p11 or MTR3. The calculated molecular weight of EXOSC6 is 28 kDa. And it has low tissue specificity. The gene product constitutes one of the subunits of the multisubunit particle called exosome, which mediates mRNA degradation. It is also a component of the RNA exosome complex (PubMed: 29906447). The composition of human exosome is similar to its yeast counterpart. EXOSC6 is homologous to the yeast Mtr3 protein. Its exact function is not known, however, it has been shown using a cell-free RNA decay system that the exosome is required for rapid degradation of unstable mRNAs containing AU-rich elements (AREs), but not for poly(A) shortening. The exosome does not recognize ARE-containing mRNAs on its own, but requires ARE-binding proteins that could interact with the exosome and recruit it to unstable mRNAs, thereby promoting their rapid degradation.

Stockage

Stockage:
Stocker à -20°C. Stable pendant un an après l'expédition.
Tampon de stockage:
PBS avec azoture de sodium à 0,02 % et glycérol à 50 % pH 7,3
L'aliquotage n'est pas nécessaire pour le stockage à -20C

*** Les 20ul contiennent 0,1% de BSA.

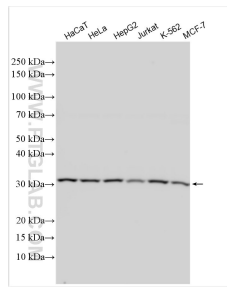
For technical support and original validation data for this product please contact:

T: 1 (888) 4PTGLAB (1-888-478-4522) (toll free in USA), or 1(312) 455-8498 (outside USA)

E: proteintech@ptglab.com
W: ptglab.com

This product is exclusively available under Proteintech Group brand and is not available to purchase from any other manufacturer.

Données de validation sélectionnées



Various lysates were subjected to SDS PAGE followed by western blot with 30685-1-AP (EXOSC6 antibody) at dilution of 1:1500 incubated at room temperature for 1.5 hours.