

À des fins de recherche uniquement

# Anticorps Polyclonal de lapin anti-BCL10



Numéro de catalogue: 50180-1-AP

Phare

3 Publications

## Informations de base

Numéro de catalogue:

50180-1-AP

Numéro d'acquisition GenBank:

BC053617

Méthode de purification:

Purification par affinité contre l'antigène

Taille:

150µl, Concentration: 850 µg/ml by Nanodrop and 400 µg/ml by Bradford method using BSA as the standard;

Identification du gène (NCBI):

8915

Dilutions recommandées:

WB 1:1000-1:6000

IHC 1:250-1:1000

Hôte:

Lapin

MW calculé

233 aa, 26 kDa

Isotype:

IgG

MW observés:

26-32 kDa

Immunogen Catalog Number:

AG0037

## Applications

Applications testées:

FC, IHC, WB, ELISA

Demandes citées:

WB

Spécificité de l'espèce:

Humain, rat, souris

Espèces citées:

Humain, souris

**Remarque-IHC: il est suggéré de démasquer l'antigène avec un tampon de TE buffer pH 9,0; (\*) A défaut, le démasquage de l'antigène peut être effectué avec un tampon citrate pH 6,0.**

Contrôles positifs:

WB : cellules A549, cellules Jurkat, cellules K-562, cellules Raji, cellules Ramos, tissu ovarien de rat, tissu ovarien de souris

IHC : tissu de cancer du poumon humain, tissu de cancer du côlon humain

## Informations générales

The gene encoding BCL10 was identified by its recurrent translocation t(1;14)(p22;q32) in a case of mucosa-associated lymphoid tissue (MALT) lymphoma. BCL10 contains a caspase recruitment domain (CARD), and has been shown to induce apoptosis and to activate NF-kappaB.

## Publications notables

Autrice	Pubmed ID	Journal	Application
Fatma Aybuke Mazi	36708753	Cell Signal	WB
Dong Wei W	16831874	J Biol Chem	WB
Liu Yingle Y	15213237	J Biol Chem	WB

## Stockage

Stockage:

Stocker à -20 °C.

Tampon de stockage:

PBS avec azoture de sodium à 0,02 % et glycérol à 50 % pH 7,3

L'aliquotage n'est pas nécessaire pour le stockage à -20C

\*\*\* Les 200µl contiennent 0,1% de BSA.

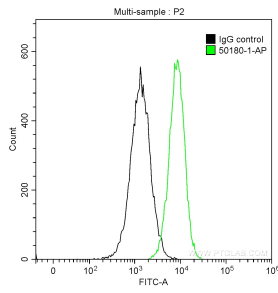
For technical support and original validation data for this product please contact:

T: 1 (888) 4PTGLAB (1-888-478-4522) (toll free in USA), or 1(312) 455-8498 (outside USA)

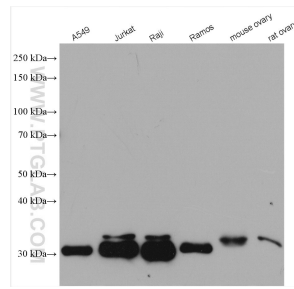
E: [proteintech@ptglab.com](mailto:proteintech@ptglab.com)  
W: [ptglab.com](http://ptglab.com)

This product is exclusively available under Proteintech Group brand and is not available to purchase from any other manufacturer.

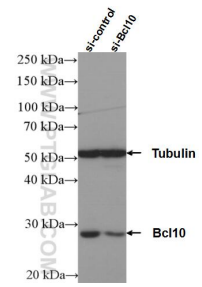
## Données de validation sélectionnées



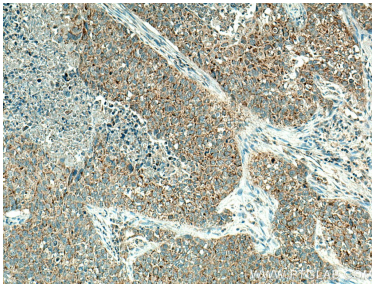
1X10<sup>6</sup> Jurkat cells were intracellularly stained with 0.2 ug Anti-Human BCL10 (50180-1-AP) and CoraLite®488-Conjugated AffiniPure Goat Anti-Rabbit IgG(H+L) at dilution 1:1000 (green), and 0.2 ug Control Antibody. Cells were fixed with 90% MeOH.



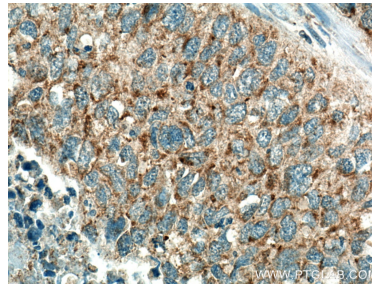
Various lysates were subjected to SDS PAGE followed by western blot with 50180-1-AP (BCL10 antibody) at dilution of 1:3000 incubated at room temperature for 1.5 hours.



WB result of BCL10 antibody (50180-1-AP; 1:1000; incubated at room temperature for 1.5 hours) with sh-Control and sh-BCL10 transfected K-562 cells.



Immunohistochemical analysis of paraffin-embedded human lung cancer tissue slide using 50180-1-AP (BCL10 antibody) at dilution of 1:500 (under 10x lens). Heat mediated antigen retrieval with Tris-EDTA buffer (pH 9.0).



Immunohistochemical analysis of paraffin-embedded human lung cancer tissue slide using 50180-1-AP (BCL10 antibody) at dilution of 1:500 (under 40x lens). Heat mediated antigen retrieval with Tris-EDTA buffer (pH 9.0).