

À des fins de recherche uniquement

Anticorps Polyclonal de lapin anti-Mecr



Numéro de catalogue: 51027-2-AP

5 Publications

Informations de base

Numéro de catalogue:

51027-2-AP

Taille:

150ul, Concentration: 600 µg/ml by Nanodrop;

Hôte:

Lapin

Isotype:

IgG

Immunogen Catalog Number:

AG0465

Numéro d'acquisition GenBank:

BC003864

Identification du gène (NCBI):

26922

Nom complet:

mitochondrial trans-2-enoyl-CoA reductase

MW calculé

40 kDa

MW observés:

37-40 kDa

Méthode de purification:

Purification par affinité contre l'antigène

Dilutions recommandées:

WB 1:2000-1:10000

IP 0.5-4.0 µg for IP and 1:500-1:3000 for WB

IHC 1:20-1:200

IF 1:50-1:500

Applications

Applications testées:

IF, IHC, IP, WB, ELISA

Demandes citées:

IF, IHC, WB

Spécificité de l'espèce:

Humain, rat, souris

Espèces citées:

Humain, levure, souris

Contrôles positifs:

WB : tissu cardiaque de souris, tissu cardiaque de rat, tissu de muscle squelettique de souris, tissu d'estomac de souris

IP : tissu cardiaque de souris,

IHC : tissu de tumeur ovarienne humain,

IF : cellules C2C12,

Remarque-IHC: il est suggéré de démasquer l'antigène avec un tampon de TE buffer pH 9,0; (*) À défaut, 'le démasquage de l'antigène peut être effectué avec un tampon citrate pH 6,0.

Informations générales

Mitochondrial Trans-2-Enoyl-CoA Reductase is abbreviated as MECCR, involved in human mitochondrial fatty acid synthesis (mtFAS) as an oxidoreductase. (PMID: 27817865) MECCR has molecular weight can be calculated around 37kDa. With immunoprecipitation reaction on mouse heart samples, the IgG heavy chain, dimer of MECCR is around 65kDa. Numerous studies have shown disorder of lipid metabolism is closely related with malignance, especially in liver cancer. As further research suggests that MECCR has close relationship with cell proliferation, apoptosis, and metastasis (PMID: 31178528)

Publications notables

Autrice	Pubmed ID	Journal	Application
Remya R Nair	30266742	J Neurosci	IHC,IF
Remya R Nair	28369354	Hum Mol Genet	WB
Gali Heimer	27817865	Am J Hum Genet	WB

Stockage

Stockage:

Stocker à -20°C. Stable pendant un an après l'expédition.

Tampon de stockage:

PBS avec azoture de sodium à 0,02 % et glycérol à 50 % pH 7,3

L'aliquotage n'est pas nécessaire pour le stockage à -20C

*** Les 20ul contiennent 0,1% de BSA.

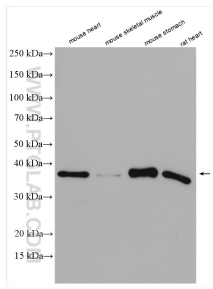
For technical support and original validation data for this product please contact:

T: 1 (888) 4PTGLAB (1-888-478-4522) (toll free in USA), or 1(312) 455-8498 (outside USA)

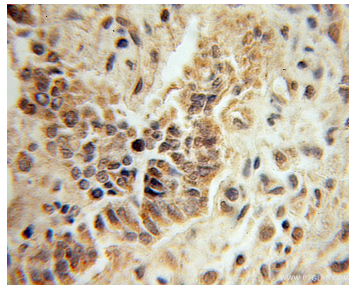
E: proteintech@ptglab.com
W: ptglab.com

This product is exclusively available under Proteintech Group brand and is not available to purchase from any other manufacturer.

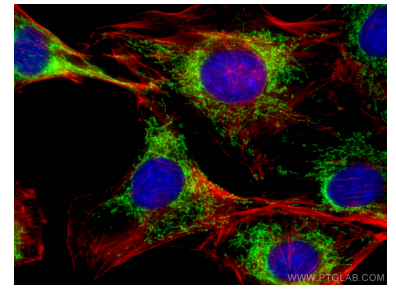
Données de validation sélectionnées



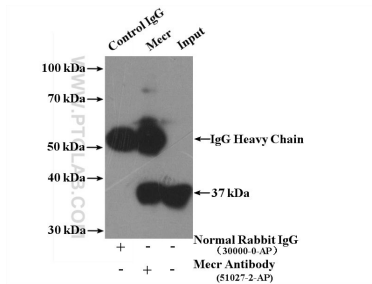
Various lysates were subjected to SDS PAGE followed by western blot with 51027-2-AP (Mecr antibody) at dilution of 1:5000 incubated at room temperature for 1.5 hours.



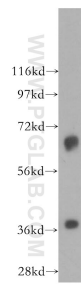
Immunohistochemical analysis of paraffin-embedded human ovary tumor using 51027-2-AP (Mecr antibody) at dilution of 1:100 (under 10x lens).



Immunofluorescent analysis of (4% PFA) fixed C2C12 cells using Mecr antibody (51027-2-AP) at dilution of 1:200 and CoraLite@488-Conjugated AffiniPure Goat Anti-Rabbit IgC(H+L), CL594-Phalloidin (red).



IP Result of anti-Mecr (IP:51027-2-AP, 4ug; Detection:51027-2-AP 1:1500) with mouse heart tissue lysate 4800ug.



mouse heart tissue were subjected to SDS PAGE followed by western blot with 51027-2-AP (Mecr antibody) at dilution of 1:3000 incubated at room temperature for 1.5 hours.