

À des fins de recherche uniquement

# Anticorps Polyclonal de lapin anti-Connexin-26



Numéro de catalogue: 51037-2-AP

## Informations de base

<b>Numéro de catalogue:</b> 51037-2-AP	<b>Numéro d'acquisition GenBank:</b> BC017048	<b>Méthode de purification:</b> Purification par affinité contre l'antigène
<b>Taille:</b> 150ul , Concentration: 600 µg/ml by Bradford method using BSA as the standard;	<b>Identification du gène (NCBI):</b> 2706	<b>Dilutions recommandées:</b> WB 1:200-1:1000
<b>Hôte:</b> Lapin	<b>Nom complet:</b> gap junction protein, beta 2, 26kDa	
<b>Isotype:</b> IgG	<b>MW calculé:</b> 26 kDa	
	<b>MW observés:</b> 26 kDa	

## Applications

<b>Applications testées:</b> WB, ELISA	<b>Contrôles positifs:</b> WB : tissu cérébral humain,
<b>Spécificité de l'espèce:</b> Humain, rat, souris	

## Informations générales

The gap junctions were first characterized by electron microscopy as regionally specialized structures on plasma membranes of contacting adherent cells. These structures were shown to consist of cell-to-cell channels that facilitate the transfer of ions and small molecules between cells. The gap junction proteins, also known as connexins, purified from fractions of enriched gap junctions from different tissues differ. According to sequence similarities at the nucleotide and amino acid levels, the gap junction proteins are divided into two categories, alpha and beta. Connexin-26 (GJB2) is a beta class gap junction protein. Mutations in the gene for connexin-26 are responsible for as much as 50% of pre-lingual, recessive deafness.

## Stockage

**Stockage:**  
Stocker à -20 °C.  
**Tampon de stockage:**  
PBS avec azoture de sodium à 0,02 % et glycérol à 50 % pH 7,3  
L'aliquotage n'est pas nécessaire pour le stockage à -20C

\*\*\* Les 20ul contiennent 0,1% de BSA.

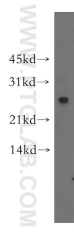
For technical support and original validation data for this product please contact:

T: 1 (888) 4PTGLAB (1-888-478-4522) (toll free in USA), or 1(312) 455-8498 (outside USA)

E: [proteintech@ptglab.com](mailto:proteintech@ptglab.com)  
W: [ptglab.com](http://ptglab.com)

This product is exclusively available under Proteintech Group brand and is not available to purchase from any other manufacturer.

## Données de validation sélectionnées



human brain tissue were subjected to SDS PAGE followed by western blot with 51037-2-AP (Connexin-26 antibody) at dilution of 1:300 incubated at room temperature for 1.5 hours.