

À des fins de recherche uniquement

Anticorps Polyclonal de lapin anti-CRLS1



Numéro de catalogue: 51055-1-AP

1 Publications

Informations de base

Numéro de catalogue:

51055-1-AP

Taille:

150ul , Concentration: 300 µg/ml by Bradford method using BSA as the standard;

Hôte:

Lapin

Isotype:

IgG

Numéro d'acquisition GenBank:

BC069010

Identification du gène (NCBI):

54675

Nom complet:

cardiolipin synthase 1

MW calculé

301 aa, 32 kDa

MW observés:

50 kDa

Méthode de purification:

Purification par affinité contre l'antigène

Dilutions recommandées:

WB 1:200-1:1000

IHC 1:50-1:500

Applications

Applications testées:

IHC, WB, ELISA

Demandes citées:

WB

Spécificité de l'espèce:

Humain, souris

Espèces citées:

souris

Remarque-IHC: il est suggéré de démasquer l'antigène avec un tampon de TE buffer pH 9,0; (*) À défaut, le démasquage de l'antigène peut être effectué avec un tampon citrate pH 6,0.

Contrôles positifs:

WB : tissu cardiaque de souris,

IHC : tissu cardiaque humain, tissu cardiaque de souris, tissu de cancer du sein humain

Informations générales

Cardiolipin (CL) is a mitochondrial specific double negatively charged phospholipid which is intricately involved in regulating bioenergetic efficiency. In eukaryotes, CL is synthesized by cardiolipin synthase (CRLS1 or CLS1) which catalyzes the reversible phosphatidyl group transfer from one phosphatidylglycerol molecule to another to form CL and glycerol. Recently it has been reported that transgenic expression of CRLS1 accelerates cardiolipin remodeling, improves mitochondrial function, modulates mitochondrial signaling, and attenuates mitochondrial dysfunction during diabetes, thereby identifying CRLS1 as a novel therapeutic target to attenuate mitochondrial dysfunction in diabetic myocardium. The predicted molecular weight of CRLS1 is around 32-35 kDa, while a 50 kDa protein with CRLS1 activity had been observed in liver isolation, which may represent an isoform of CRLS1 (20652826).

Publications notables

Autrice	Pubmed ID	Journal	Application
Li Chen	35313046	Hepatology	WB

Stockage

Stockage:

Stocker à -20 °C

Tampon de stockage:

PBS avec azoture de sodium à 0,02 % et glycérol à 50 % pH 7,3

L'aliqotage n'est pas nécessaire pour le stockage à -20C

*** Les 20ul contiennent 0,1% de BSA.

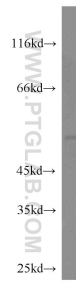
For technical support and original validation data for this product please contact:

T: 1 (888) 4PTGLAB (1-888-478-4522) (toll free in USA), or 1(312) 455-8498 (outside USA)

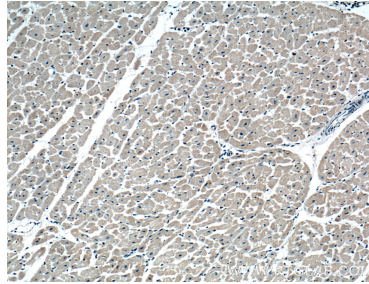
E: proteintech@ptglab.com
W: ptglab.com

This product is exclusively available under Proteintech Group brand and is not available to purchase from any other manufacturer.

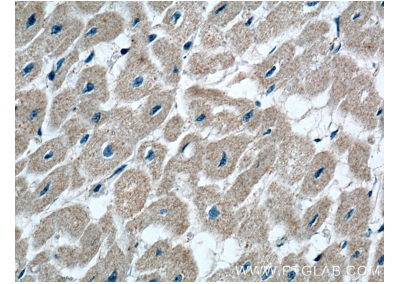
Données de validation sélectionnées



mouse heart tissue were subjected to SDS PAGE followed by western blot with 51055-1-AP (CRLS1 antibody) at dilution of 1:300 incubated at room temperature for 1.5 hours.



Immunohistochemical analysis of paraffin-embedded human heart tissue slide using 51055-1-AP (CRLS1 Antibody) at dilution of 1:200 (under 10x lens).



Immunohistochemical analysis of paraffin-embedded human heart tissue slide using 51055-1-AP (CRLS1 Antibody) at dilution of 1:200 (under 40x lens).