

À des fins de recherche uniquement

# Anticorps Polyclonal de lapin anti-IkB Alpha



Numéro de catalogue: 51066-1-AP

10 Publications

## Informations de base

Numéro de catalogue:

51066-1-AP

Taille:

150ul, Concentration: 500 µg/ml by Nanodrop and 340 µg/ml by Bradford method using BSA as the standard;

Hôte:

Lapin

Isotype:

IgG

Numéro d'acquisition GenBank:

BC002601

Identification du gène (NCBI):

4792

Nom complet:

nuclear factor of kappa light polypeptide gene enhancer in B-cells inhibitor, alpha

MW calculé

36 kDa

MW observés:

39 kDa

Méthode de purification:

Purification par affinité contre l'antigène

Dilutions recommandées:

WB 1:500-1:2000

IP 0.5-4.0 ug for IP and 1:500-1:2000 for WB

IHC 1:50-1:500

## Applications

Applications testées:

IHC, IP, WB, ELISA

Demandes citées:

WB

Spécificité de l'espèce:

Humain, souris

Espèces citées:

Humain, rat, souris

**Remarque-IHC: il est suggéré de démasquer l'antigène avec un tampon de TE buffer pH 9,0; (\*) À défaut, le démasquage de l'antigène peut être effectué avec un tampon citrate pH 6,0.**

Contrôles positifs:

WB : cellules PC-3, cellules HeLa, cellules Jurkat

IP : cellules HeLa,

IHC : tissu de cancer du col de l'utérus humain, tissu hépatique humain

## Informations générales

Nuclear factor of kappa light polypeptide gene enhancer in B-cells inhibitor, alpha (NFKB1A, synonyms: IKBA, MAD-3, NFKB1). NFKB1 or NFKB2 is bound to REL, RELA, or RELB to form the NFKB complex. The NFKB complex is inhibited by I-kappa-B proteins (NFKBIA or NFKBIB), which inactivate NF-kappa-B by trapping it in the cytoplasm. Phosphorylation of serine residues on the I-kappa-B proteins by kinases (IKBKA, or IKBKB) marks them for destruction via the ubiquitination pathway, thereby allowing activation of the NF-kappa-B complex. Activated NFKB complex translocates into the nucleus and binds DNA at kappa-B-binding motifs such as 5-prime GGGRNNYYCC 3-prime or 5-prime HGGARNYYCC 3-prime.

## Publications notables

Autrice	Pubmed ID	Journal	Application
Zheng Zhenhua Z	21810613	J Immunol	WB
Hao Wang	34745126	Front Immunol	WB
Mathilde Chataigner	33801489	Nutrients	WB

## Stockage

Stockage:

Stocker à -20 °C.

Tampon de stockage:

PBS avec azoture de sodium à 0,02 % et glycérol à 50 % pH 7,3

L'aliquoteage n'est pas nécessaire pour le stockage à -20C

\*\*\* Les 20ul contiennent 0,1% de BSA.

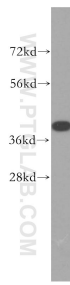
For technical support and original validation data for this product please contact:

T: 1 (888) 4PTGLAB (1-888-478-4522) (toll free in USA), or 1(312) 455-8498 (outside USA)

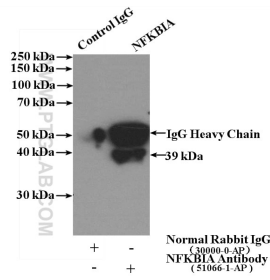
E: [proteintech@ptglab.com](mailto:proteintech@ptglab.com)  
W: [ptglab.com](http://ptglab.com)

This product is exclusively available under Proteintech Group brand and is not available to purchase from any other manufacturer.

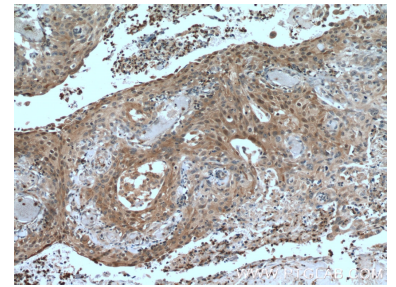
## Données de validation sélectionnées



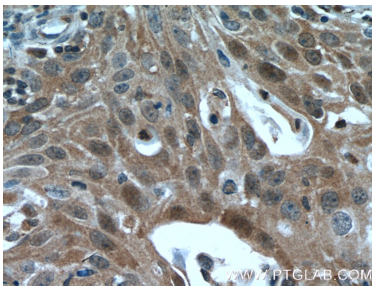
PC-3 cells were subjected to SDS PAGE followed by western blot with 51066-1-AP (IκB alpha antibody) at dilution of 1:500 incubated at room temperature for 1.5 hours.



IP Result of anti-IκB alpha (IP:51066-1-AP, 4ug; Detection:51066-1-AP 1:1000) with HeLa cells lysate 3200ug.



Immunohistochemical analysis of paraffin-embedded human cervical cancer tissue slide using 51066-1-AP (IκB alpha antibody) at dilution of 1:200 (under 10x lens. Heat mediated antigen retrieval with Tris-EDTA buffer (pH 9.0).



Immunohistochemical analysis of paraffin-embedded human cervical cancer tissue slide using 51066-1-AP (IκB alpha antibody) at dilution of 1:200 (under 40x lens. Heat mediated antigen retrieval with Tris-EDTA buffer (pH 9.0).