

À des fins de recherche uniquement

Anticorps Polyclonal de lapin anti-EGFR (C-terminal)



Numéro de catalogue: 51071-2-AP

17 Publications

Informations de base

Numéro de catalogue:

51071-2-AP

Taille:

150ul, Concentration: 4000 µg/ml by Nanodrop and 667 µg/ml by Bradford method using BSA as the standard;

Hôte:

Lapin

Isotype:

IgG

Numéro d'acquisition GenBank:

BC094761

Identification du gène (NCBI):

1956

Nom complet:

epidermal growth factor receptor (erythroblastic leukemia viral (v-erb-b) oncogene homolog, avian)

MW calculé

1210 aa, 134 kDa

MW observés:

170 kDa

Méthode de purification:

Purification par affinité contre l'antigène

Dilutions recommandées:

WB 1:500-1:2000

IP 0.5-4.0 ug for IP and 1:500-1:1000 for WB

Applications

Applications testées:

IP, WB, ELISA

Demandes citées:

IF, IHC, WB

Spécificité de l'espèce:

Humain

Espèces citées:

Humain, souris

Contrôles positifs:

WB : cellules A431, cellules HeLa, cellules L02

IP : cellules A431,

Informations générales

EGFR, also named as ERBB1, is a cell-surface receptor for members of the epidermal growth factor family (EGF-family) of extracellular protein ligands. Binding of the protein to a ligand induces receptor dimerization and tyrosine autophosphorylation and leads to cell proliferation. The gene resides on chromosome 7p12, encoding a 170 kDa membrane-associated glycoprotein. Recent studies have shown EGFR plays a critical role in cancer development and progression, including cell proliferation, apoptosis, angiogenesis, and metastatic spread. Mutations in this gene are associated with lung cancer. The antibody is specific to isoform1.

Publications notables

Autrice	Pubmed ID	Journal	Application
Samusi Adediran	36230550	Cancers (Basel)	WB
Xiaojin Liu	36230833	Cancers (Basel)	WB
Minglu Liu	36467051	Front Pharmacol	WB

Stockage

Stockage:

Stocker à -20°C. Stable pendant un an après l'expédition.

Tampon de stockage:

PBS avec azoture de sodium à 0,02 % et glycérol à 50 % pH 7,3

L'aliquotage n'est pas nécessaire pour le stockage à -20C

*** Les 20ul contiennent 0,1% de BSA.

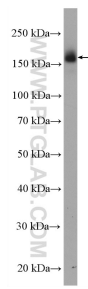
For technical support and original validation data for this product please contact:

T: 1 (888) 4PTGLAB (1-888-478-4522) (toll free in USA), or 1(312) 455-8498 (outside USA)

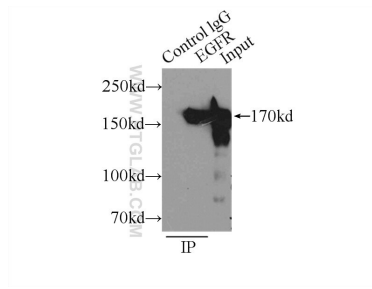
E: proteintech@ptglab.com
W: ptglab.com

This product is exclusively available under Proteintech Group brand and is not available to purchase from any other manufacturer.

Données de validation sélectionnées



A431 cells were subjected to SDS PAGE followed by western blot with 51071-2-AP (EGFR (C-terminal) antibody) at dilution of 1:1000 incubated at room temperature for 1.5 hours.



IP Result of anti-EGFR (C-terminal) (IP:51071-2-AP, 5ug; Detection:51071-2-AP 1:500) with A431 cells lysate 3000ug.