

À des fins de recherche uniquement

Anticorps Polyclonal de lapin anti-STAT6



Numéro de catalogue: 51073-1-AP

Phare

18 Publications

Informations de base

Numéro de catalogue:

51073-1-AP

Taille:

150ul, Concentration: 500 µg/ml by Nanodrop;

Hôte:

Lapin

Isotype:

IgG

Numéro d'acquisition GenBank:

BC075852

Identification du gène (NCBI):

6778

Nom complet:

signal transducer and activator of transcription 6, interleukin-4 induced

MW calculé

94 kDa

MW observés:

100-110 kDa

Méthode de purification:

Purification par affinité contre l'antigène

Dilutions recommandées:

WB 1:1000-1:8000

IHC 1:20-1:200

Applications

Applications testées:

IHC, WB, ELISA

Demandes citées:

IF, IHC, RIP, WB

Spécificité de l'espèce:

Humain, rat, souris

Espèces citées:

Humain, rat, souris

Contrôles positifs:

WB : cellules HeLa, cellules Jurkat, cellules MCF-7, cellules NIH/3T3, cellules PC-12, cellules THP-1

IHC : tissu splénique humain, tissu de cancer du côlon humain, tissu pulmonaire de souris, tissu pulmonaire humain

Remarque-IHC: il est suggéré de démasquer l'antigène avec un tampon de TE buffer pH 9,0; (*) À défaut, le démasquage de l'antigène peut être effectué avec un tampon citrate pH 6,0.

Informations générales

STAT6, also named as Signal transducer and activator of transcription 6, is a 847 amino acid protein, which belongs to the transcription factor STAT family. STAT6 forms a homodimer or a heterodimer with a related family member. STAT6 translocates into the nucleus in response to phosphorylation. STAT6 is Involved in IL4/interleukin-4- and IL3/interleukin-3-mediated signaling. The antibody could identify about 100 kDa band, similar to the reported in the literature(PMID: 10961983).

Publications notables

Autrice	Pubmed ID	Journal	Application
Xiwen Xiong	36232438	Int J Mol Sci	WB,IF
Weili Zheng	34778251	Front Cell Dev Biol	WB
Lingyan Chen	36443287	Cell Death Dis	WB

Stockage

Stockage:

Stocker à -20°C. Stable pendant un an après l'expédition.

Tampon de stockage:

PBS avec azoture de sodium à 0,02 % et glycérol à 50 % pH 7,3

L'aliquotage n'est pas nécessaire pour le stockage à -20C

***** Les 20ul contiennent 0,1% de BSA.**

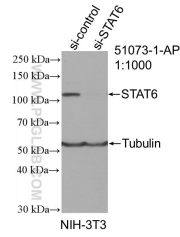
For technical support and original validation data for this product please contact:

T: 1 (888) 4PTGLAB (1-888-478-4522) (toll free in USA), or 1(312) 455-8498 (outside USA)

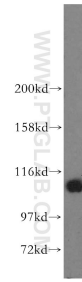
E: proteintech@ptglab.com
W: ptglab.com

This product is exclusively available under Proteintech Group brand and is not available to purchase from any other manufacturer.

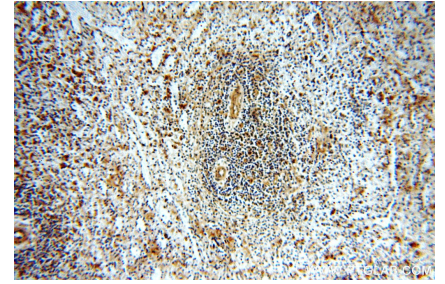
Données de validation sélectionnées



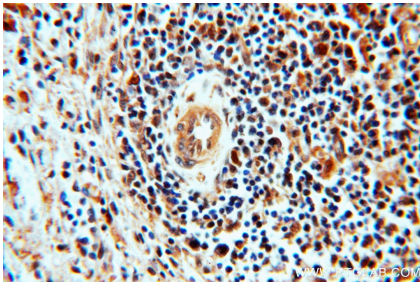
WB result of STAT6 antibody (51073-1-AP; 1:1000; incubated at room temperature for 1.5 hours) with sh-Control and sh-STAT6 transfected NIH/3T3 cells.



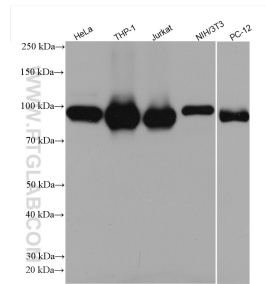
NIH/3T3 cells were subjected to SDS PAGE followed by western blot with 51073-1-AP (STAT6 antibody) at dilution of 1:1500 incubated at room temperature for 1.5 hours.



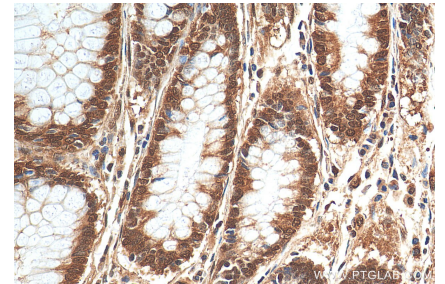
Immunohistochemical analysis of paraffin-embedded human spleen using 51073-1-AP (STAT6 antibody) at dilution of 1:50 (under 10x lens).



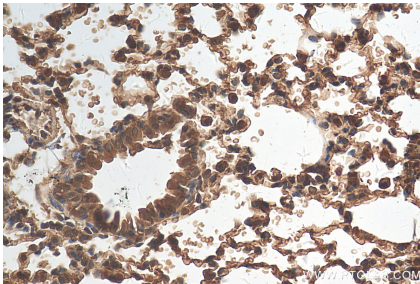
Immunohistochemical analysis of paraffin-embedded human spleen using 51073-1-AP (STAT6 antibody) at dilution of 1:50 (under 40x lens).



Various lysates were subjected to SDS PAGE followed by western blot with 51073-1-AP (STAT6 antibody) at dilution of 1:4000 incubated at room temperature for 1.5 hours.



Immunohistochemical analysis of paraffin-embedded human colon cancer tissue slide using 51073-1-AP (STAT6 antibody) at dilution of 1:200 (under 40x lens). Heat mediated antigen retrieval with Tris-EDTA buffer (pH 9.0).



Immunohistochemical analysis of paraffin-embedded mouse lung tissue slide using 51073-1-AP (STAT6 antibody) at dilution of 1:200 (under 40x lens). Heat mediated antigen retrieval with Tris-EDTA buffer (pH 9.0).