

À des fins de recherche uniquement

Anticorps Polyclonal de lapin anti-STAT3



Numéro de catalogue: 51076-2-AP

5 Publications

Informations de base

Numéro de catalogue:
51076-2-AP

Taille:
150ul, Concentration: 340 µg/ml by Nanodrop and 340 µg/ml by Bradford method using BSA as the standard;

Hôte:
Lapin

Isotype:
IgG

Numéro d'acquisition GenBank:
BC000627

Identification du gène (NCBI):
6774

Nom complet:
signal transducer and activator of transcription 3 (acute-phase response factor)

MW calculé
770 aa, 88 kDa

MW observés:
88 kDa

Méthode de purification:
Purification par affinité contre l'antigène

Dilutions recommandées:
WB 1:500-1:1000
IP 0.5-4.0 ug for IP and 1:500-1:1000 for WB
IHC 1:50-1:500

Applications

Applications testées:
IHC, IP, WB, ELISA

Demandes citées:
IP, WB

Spécificité de l'espèce:
Humain

Espèces citées:
Humain, souris

Remarque-IHC: il est suggéré de démasquer l'antigène avec un tampon de TE buffer pH 9,0; (*) A défaut, 'le démasquage de l'antigène peut être effectué avec un tampon citrate pH 6,0.

Contrôles positifs:

WB : cellules K-562, cellules HeLa

IP : cellules HeLa,

IHC : tissu de cancer du col de l'utérus humain, tissu de cancer du poumon humain, tissu de cancer du sein humain

Informations générales

Signal transducer and activator of transcription 3 (acute-phase response factor) (STAT3, synonyms: APRF, FLJ20882, MGC16063) is a member of the STAT protein family. In response to cytokines and growth factors, STAT family members are phosphorylated by the receptor associated kinases, and then form homo- or heterodimers that translocate to the cell nucleus where they act as transcription activators. STAT3 is activated through phosphorylation in response to various cytokines and growth factors including IFNs, EGF, IL5, IL6, HGF, LIF and BMP2. STAT3 mediates the expression of a variety of genes in response to cell stimuli, and thus plays a key role in many cellular processes such as cell growth and apoptosis. The small GTPase Rac1 has been shown to bind and regulate the activity of STAT3. This antibody is a rabbit polyclonal antibody raised against a peptide mapping within human STAT3. STAT3 exists three isoforms and the molecular weight of each isoform respectively is 83 kDa, 87 kDa and 88 kDa.

Publications notables

Autrice	Pubmed ID	Journal	Application
Chung-I Yu	32222934	Neurotox Res	WB
Yu Sun	32030835	FASEB J	WB
Shengjin Yu	34429775	Oncol Lett	WB

Stockage

Stockage:

Stocker à -20°C. Stable pendant un an après l'expédition.

Tampon de stockage:

PBS avec azoture de sodium à 0,02 % et glycérol à 50 % pH 7,3

L'aliquotage n'est pas nécessaire pour le stockage à -20C

*** Les 20ul contiennent 0,1% de BSA.

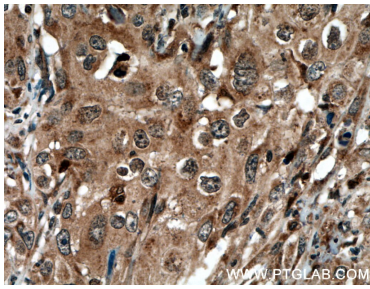
For technical support and original validation data for this product please contact:

T: 1 (888) 4PTGLAB (1-888-478-4522) (toll free in USA), or 1(312) 455-8498 (outside USA)

E: proteintech@ptglab.com
W: ptglab.com

This product is exclusively available under Proteintech Group brand and is not available to purchase from any other manufacturer.

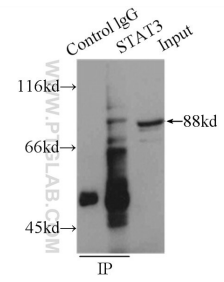
Données de validation sélectionnées



Immunohistochemical analysis of paraffin-embedded human cervical cancer tissue slide using 51076-2-AP (STAT3 antibody) at dilution of 1:200 (under 40x lens. Heat mediated antigen retrieval with Tris-EDTA buffer (pH 9.0).



K-562 cells were subjected to SDS PAGE followed by western blot with 51076-2-AP (STAT3 antibody) at dilution of 1:500 incubated at room temperature for 1.5 hours.



IP Result of anti-STAT3 (IP:51076-2-AP, 4ug; Detection:51076-2-AP 1:500) with HeLa cells lysate 1500ug.