

À des fins de recherche uniquement

Anticorps Polyclonal de lapin anti-HER2/ErbB2



Numéro de catalogue: 51105-1-AP

Informations de base

Numéro de catalogue: 51105-1-AP	Numéro d'acquisition GenBank: BC167147	Méthode de purification: Purification par affinité contre l'antigène
Taille: 150ul, Concentration: 300 µg/ml by Nanodrop and 160 µg/ml by Bradford method using BSA as the standard;	Identification du gène (NCBI): 2064	Dilutions recommandées: WB 1:500-1:2000 IHC 1:20-1:200 IF 1:20-1:200
Hôte: Lapin	Nom complet: v-erb-b2 erythroblastic leukemia viral oncogene homolog 2, neuro/glioblastoma derived oncogene homolog (avian)	
Isotype: IgG	MW calculé: 185 kDa	
	MW observés: 185 kDa	

Applications

Applications testées: IF, IHC, WB, ELISA	Contrôles positifs: WB : cellules HeLa, cellules MCF-7
Spécificité de l'espèce: Humain	IHC : tissu de cancer du sein humain, lames de cancer du sein
Remarque-IHC: <i>il est suggéré de démasquer l'antigène avec un tampon de TE buffer pH 9,0; (*) A défaut, 'le démasquage de l'antigène peut être 'effectué avec un tampon citrate pH 6,0.</i>	IF : cellules HeLa,

Informations générales

HER2, also known as ErbB2 and Neu, is a 185-kDa transmembrane glycoprotein that is a member of the EGF receptor family of receptor tyrosine kinases. It has no ligand binding domain of its own. However, it does bind tightly to other ligand-bound EGF receptor family members to form a heterodimer, stabilizing ligand binding and enhancing kinase-mediated activation of downstream signalling pathways, such as those involving mitogen-activated protein kinase and phosphatidylinositol-3 kinase. Amplification and/or overexpression of HER2 have been reported in numerous cancers, including breast and ovarian tumors. HER2 is a therapeutic target for the treatment of breast cancer and other carcinomas.

Stockage

Stockage:
Stocker à -20 °C.
Tampon de stockage:
PBS avec azoture de sodium à 0,02 % et glycérol à 50 % pH 7,3
L'aliquotage n'est pas nécessaire pour le stockage à -20C

*** Les 20ul contiennent 0,1% de BSA.

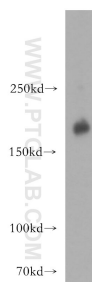
For technical support and original validation data for this product please contact:

T: 1 (888) 4PTGLAB (1-888-478-4522) (toll free in USA), or 1(312) 455-8498 (outside USA)

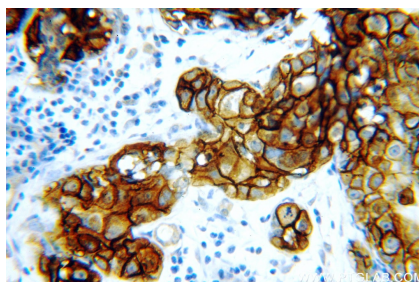
E: proteintech@ptglab.com
W: ptglab.com

This product is exclusively available under Proteintech Group brand and is not available to purchase from any other manufacturer.

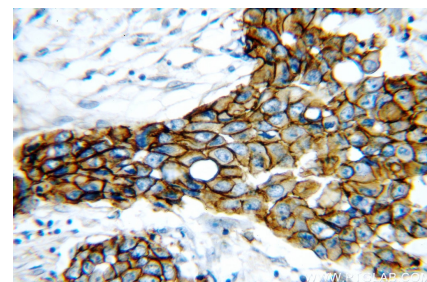
Données de validation sélectionnées



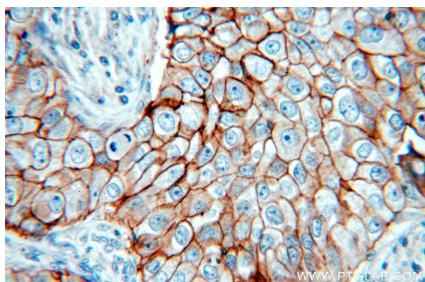
HeLa cells were subjected to SDS PAGE followed by western blot with 51105-1-AP (HER2/ErbB2 antibody) at dilution of 1:300 incubated at room temperature for 1.5 hours.



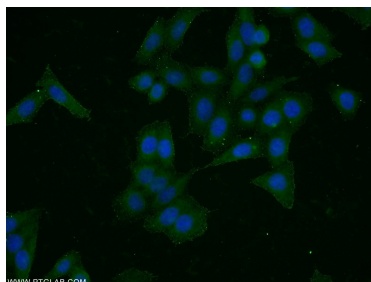
Immunohistochemical analysis of paraffin-embedded human breast cancer using 51105-1-AP (HER2/ErbB2 antibody) at dilution of 1:50 (under 40x lens).



Immunohistochemical analysis of paraffin-embedded human breast cancer using 51105-1-AP (HER2/ErbB2 antibody) at dilution of 1:50 (under 40x lens).



Immunohistochemical analysis of paraffin-embedded human breast cancer using 51105-1-AP (HER2/ErbB2 antibody) at dilution of 1:50 (under 40x lens).



Immunofluorescent analysis of HeLa cells using 51105-1-AP (HER2/ErbB2 antibody) at dilution of 1:50 and Alexa Fluor 488-conjugated AffiniPure Goat Anti-Rabbit IgG(H+L).