

À des fins de recherche uniquement

# Anticorps Polyclonal de lapin anti-SMAD4



Numéro de catalogue: 51144-1-AP

Phare

3 Publications

## Informations de base

Numéro de catalogue:

51144-1-AP

Taille:

150ul, Concentration: 450 µg/ml by Nanodrop and 333 µg/ml by Bradford method using BSA as the standard;

Hôte:

Lapin

Isotype:

IgG

Numéro d'acquisition GenBank:

BC002379

Identification du gène (NCBI):

4089

Nom complet:

SMAD family member 4

MW calculé

60 kDa

MW observés:

58 kDa

Méthode de purification:

Purification par affinité contre l'antigène

Dilutions recommandées:

WB 1:500-1:1000

IHC 1:20-1:200

## Applications

Applications testées:

IHC, WB, ELISA

Demandes citées:

WB

Spécificité de l'espèce:

Humain, rat, souris

Espèces citées:

rat

Contrôles positifs:

WB : cellules HeLa, cellules HepG2

IHC : tissu placentaire humain, tissu cardiaque humain

**Remarque-IHC: il est suggéré de démasquer l'antigène avec un tampon de TE buffer pH 9,0; (\*) À défaut, le démasquage de l'antigène peut être effectué avec un tampon citrate pH 6,0.**

## Informations générales

Mammalian homologs of the Drosophila Mad gene include Smad1, Smad2, Smad3, Smad4 (DPC4), Smad5, Smad6, Smad7 and Smad8. Smad1 and Smad5 are effectors of BMP2 and BMP4 function while Smad2 and Smad3 are involved in TGF and activin-mediated growth modulation. Smad4 has been shown to mediate all of the above activities through interaction with various Smad family members. Smad6 and Smad7 regulate the response to activin/ TGF signaling by interfering with TGF-mediated phosphorylation of other Smad family members. This antibody is a rabbit polyclonal antibody raised against a peptide (25-43aa) mapping within human SMAD4. It is specific to SMAD4.

## Publications notables

Autrice	Pubmed ID	Journal	Application
Ruichen Wang	33365066	Exp Ther Med	WB
Bianqiao Cheng	30651793	Exp Ther Med	WB
Qian Huang	35600274	Open Life Sci	WB

## Stockage

Stockage:

Stocker à -20 °C

Tampon de stockage:

PBS avec azoture de sodium à 0,02 % et glycérol à 50 % pH 7,3

L'aliquotage n'est pas nécessaire pour le stockage à -20C

\*\*\* Les 20ul contiennent 0,1% de BSA.

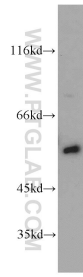
For technical support and original validation data for this product please contact:

T: 1 (888) 4PTGLAB (1-888-478-4522) (toll free in USA), or 1(312) 455-8498 (outside USA)

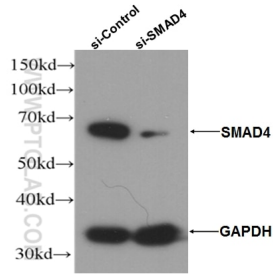
E: proteintech@ptglab.com  
W: ptglab.com

This product is exclusively available under Proteintech Group brand and is not available to purchase from any other manufacturer.

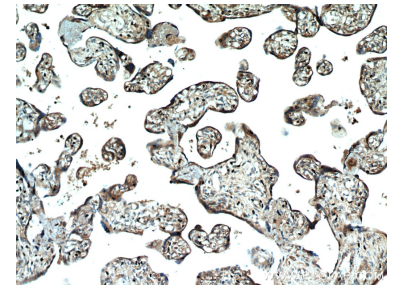
## Données de validation sélectionnées



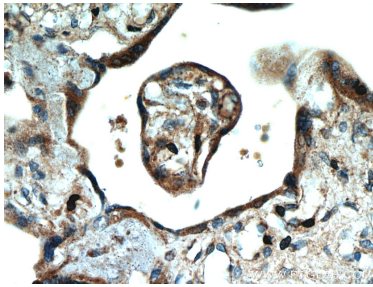
HeLa cells were subjected to SDS PAGE followed by western blot with 51144-1-AP (SMAD4 antibody) at dilution of 1:300 incubated at room temperature for 1.5 hours.



WB results of SMAD4 antibody (51144-1-AP, 1:1000) with si-Control and si-SMAD4 transfected HepG2 cells.



Immunohistochemical analysis of paraffin-embedded human placenta using 51144-1-AP (SMAD4 antibody) at dilution of 1:50 (under 10x lens).



Immunohistochemical analysis of paraffin-embedded human placenta using 51144-1-AP (SMAD4 antibody) at dilution of 1:50 (under 40x lens).