

À des fins de recherche uniquement

Anticorps Polyclonal de lapin anti-Drosha



Numéro de catalogue: 55001-1-AP

Phare

8 Publications

Informations de base

Numéro de catalogue: 55001-1-AP	Numéro d'acquisition GenBank: NM_013235	Méthode de purification: Purification par affinité contre l'antigène
Taille: 150ul, Concentration: 200 µg/ml by Nanodrop and 207 µg/ml by Bradford method using BSA as the standard;	Identification du gène (NCBI): 29102	Dilutions recommandées: WB 1:500-1:1000
Hôte: Lapin	Nom complet: ribonuclease type III, nuclear	
Isotype: IgG	MW calculé 159 kDa	
	MW observés: 90 kDa, 151 kDa	

Applications

Applications testées: WB, ELISA	Contrôles positifs: WB : cellules HEK-293, cellules HeLa, cellules HepG2
Demandes citées: WB	
Spécificité de l'espèce: Humain, rat, souris	
Espèces citées: Humain, souris	

Informations générales

DROSHA, also named as RN3, RNASE3L, P241 and RNASEN, is double-stranded (ds) RNA-specific endoribonuclease that is involved in the initial step of microRNA (miRNA) biogenesis. It is a component of the microprocessor complex that is required to process primary miRNA transcripts (pri-miRNAs) to release precursor miRNA (pre-miRNA) in the nucleus. Within the microprocessor complex, RNASEN/DROSHA cleaves the 3' and 5' strands of a stem-loop in pri-miRNAs (processing center 11 bp from the dsRNA-ssRNA junction) to release hairpin-shaped pre-miRNAs that are subsequently cut by the cytoplasmic DICER to generate mature miRNAs. RNASEN is involved also in pre-rRNA processing. Cleaves double-strand RNA and does not cleave single-strand RNA. And it is involved in the formation of GW bodies. The antibody is specific to DROSHA. DROSHA/RNASEN has some transcription forms with MW 160kd, 151kd, 138kd and 90kd.

Publications notables

Autrice	Pubmed ID	Journal	Application
Qiaofang Chu	35604380	J Gen Virol	WB
Yuan Wang	28522832	Sci Rep	WB
Kaiqiang Fu	31088452	BMC Biol	

Stockage

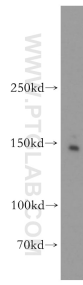
Stockage:
Stocker à -20°C. Stable pendant un an après l'expédition.
Tampon de stockage:
PBS avec azoture de sodium à 0,02 % et glycérol à 50 % pH 7,3
L'aliquotage n'est pas nécessaire pour le stockage à -20C

***** Les 20ul contiennent 0,1% de BSA.**

For technical support and original validation data for this product please contact:
T: 1 (888) 4PTGLAB (1-888-478-4522) (toll free in USA), or 1(312) 455-8498 (outside USA)
E: proteintech@ptglab.com
W: ptglab.com

This product is exclusively available under Proteintech Group brand and is not available to purchase from any other manufacturer.

Données de validation sélectionnées



HEK-293 cells were subjected to SDS PAGE followed by western blot with 55001-1-AP (Drosha antibody) at dilution of 1:800 incubated at room temperature for 1.5 hours.