

À des fins de recherche uniquement

Anticorps Polyclonal de lapin anti-NOVA2



Numéro de catalogue: 55002-1-AP

Phare

3 Publications

Informations de base

Numéro de catalogue:

55002-1-AP

Taille:

150ul, Concentration: 300 µg/ml by Nanodrop and 207 µg/ml by Bradford method using BSA as the standard;

Hôte:

Lapin

Isotype:

IgG

Numéro d'acquisition GenBank:

NM_002516

Identification du gène (NCBI):

4858

Nom complet:

neuro-oncological ventral antigen 2

MW calculé

49 kDa

MW observés:

50-55 kDa, 65-70 kDa

Méthode de purification:

Purification par affinité contre l'antigène

Dilutions recommandées:

WB 1:500-1:2000

IP 0.5-4.0 ug for IP and 1:500-1:1000 for WB

Applications

Applications testées:

IP, WB, ELISA

Demandes citées:

WB

Spécificité de l'espèce:

Humain, rat, souris

Espèces citées:

Humain, souris

Contrôles positifs:

WB : tissu cérébral de souris, tissu cérébral de rat

IP : tissu cérébral de souris,

Informations générales

NOVA2 also named as ANOVA and NOVA3. It regulates RNA splicing or metabolism in a specific subset of developing neurons. NOVA2 binds single strand RNA. The antibody is specific to NOVA2. By the alternative splicing, NOVA2 can be detected as 50-55 and 70-80 kDa (PMID:26446569, PMID:9789075).

Publications notables

Autrice	Pubmed ID	Journal	Application
Manoja K Brahma	36145242	Nutrients	WB
Florian Krach	35778567	Acta Neuropathol	WB
Dongdong Chai	32271715	Aging (Albany NY)	WB

Stockage

Stockage:

Stocker à -20°C. Stable pendant un an après l'expédition.

Tampon de stockage:

PBS avec azoture de sodium à 0,02 % et glycérol à 50 % pH 7,3

L'aliquotage n'est pas nécessaire pour le stockage à -20C

*** Les 20ul contiennent 0,1% de BSA.

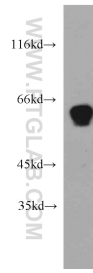
For technical support and original validation data for this product please contact:

T: 1 (888) 4PTGLAB (1-888-478-4522) (toll free in USA), or 1(312) 455-8498 (outside USA)

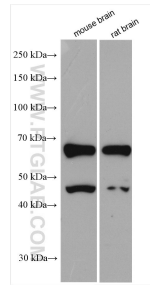
E: proteintech@ptglab.com
W: ptglab.com

This product is exclusively available under Proteintech Group brand and is not available to purchase from any other manufacturer.

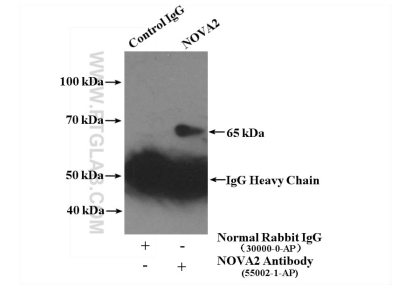
Données de validation sélectionnées



mouse brain tissue were subjected to SDS PAGE followed by western blot with 55002-1-AP (NOVA2 antibody) at dilution of 1:500 incubated at room temperature for 1.5 hours.



Various lysates were subjected to SDS PAGE followed by western blot with 55002-1-AP (NOVA2 antibody) at dilution of 1:1000 incubated at room temperature for 1.5 hours.



IP Result of anti-NOVA2 (IP:55002-1-AP, 4ug; Detection:55002-1-AP 1:500) with mouse brain tissue lysate 4000ug.