

À des fins de recherche uniquement

Anticorps Polyclonal de lapin anti-Cyclin B1



Numéro de catalogue: 55004-1-AP

Phare

220 Publications

Informations de base

Numéro de catalogue:

55004-1-AP

Taille:

150ul, Concentration: 700 µg/ml by Nanodrop;

Hôte:

Lapin

Isotype:

IgG

Numéro d'acquisition GenBank:

NM_031966

Identification du gène (NCBI):

891

Nom complet:

cyclin B1

MW calculé

48 kDa

MW observés:

55-60 kDa

Méthode de purification:

Purification par affinité contre l'antigène

Dilutions recommandées:

WB 1:1000-1:4000

IP 0.5-4.0 ug for IP and 1:500-1:1000 for WB

IF 1:50-1:500

Applications

Applications testées:

FC, IF, IP, WB, ELISA

Demandes citées:

ColP, IF, WB

Spécificité de l'espèce:

Humain, souris

Espèces citées:

bovin, Humain, rat, souris

Contrôles positifs:

WB : cellules HeLa, cellules HepG2, cellules Jurkat, cellules K-562, cellules PC-3

IP : cellules HeLa,

IF : cellules HeLa,

Informations générales

Cyclin B1 is a regulatory protein involved in mitosis. The gene product complexes with p34(cdc2) to form the maturation-promoting factor (MPF). Two alternative transcripts have been found, a constitutively expressed transcript and a cell cycle-regulated transcript, that is expressed predominantly during G2/M phase of the cell cycle. The different transcripts result from the use of alternate transcription initiation sites. The antibody is specific to CCNB1. We got a 55-60 kDa band in western blotting maybe due to phosphorylation.

Publications notables

| Autrice | Pubmed ID | Journal | Application |
|--------------|-----------|-----------------------------------|-------------|
| Zijian Zhang | 34593753 | Cell Death Dis | WB |
| Xiaoman Chen | 30207732 | Mol Pharm | WB |
| Hui-Ting Liu | 34667869 | Laryngoscope Investig Otolaryngol | WB |

Stockage

Stockage:

Stocker à -20°C. Stable pendant un an après l'expédition.

Tampon de stockage:

PBS avec azoture de sodium à 0,02 % et glycérol à 50 % pH 7,3

L'aliquotage n'est pas nécessaire pour le stockage à -20C

*** Les 20ul contiennent 0,1% de BSA.

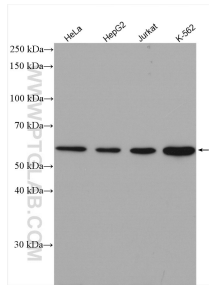
For technical support and original validation data for this product please contact:

T: 1 (888) 4PTGLAB (1-888-478-4522) (toll free in USA), or 1(312) 455-8498 (outside USA)

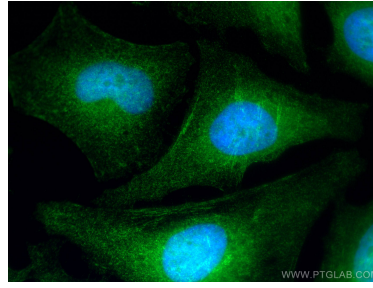
E: proteintech@ptglab.com
W: ptglab.com

This product is exclusively available under Proteintech Group brand and is not available to purchase from any other manufacturer.

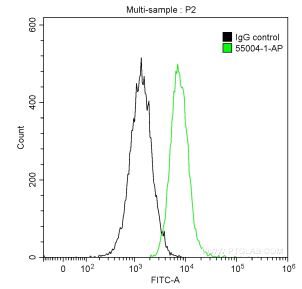
Données de validation sélectionnées



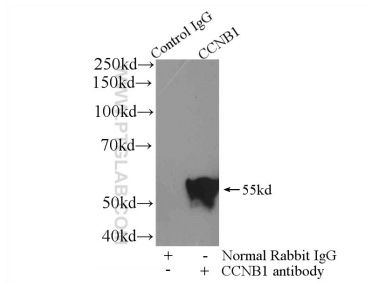
Various lysates were subjected to SDS PAGE followed by western blot with 55004-1-AP (Cyclin B1 antibody) at dilution of 1:2000 incubated at room temperature for 1.5 hours.



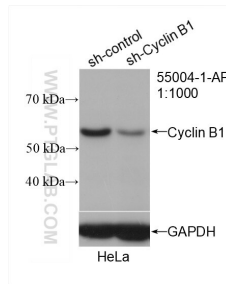
Immunofluorescent analysis of (4% PFA) fixed HeLa cells using Cyclin B1 antibody (55004-1-AP) at dilution of 1:200 and CoraLite®488-Conjugated AffiniPure Goat Anti-Rabbit IgG(H+L).



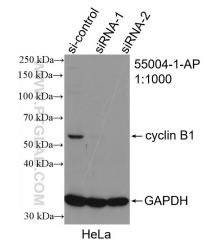
1×10^6 Jurkat cells were intracellularly stained with 0.2 ug Anti-Human Cyclin B1 (55004-1-AP) and CoraLite®488-Conjugated AffiniPure Goat Anti-Rabbit IgG(H+L) at dilution 1:1000 (green), and 0.2 ug Control Antibody. Cells were fixed with 90% MeOH.



IP Result of anti-Cyclin B1 (IP:55004-1-AP, 4ug; Detection:55004-1-AP 1:500) with HeLa cells lysate 1200ug.



WB result of Cyclin B1 antibody (55004-1-AP; 1:1000; incubated at room temperature for 1.5 hours) with sh-Control and sh-Cyclin B1 transfected HeLa cells.



WB result of Cyclin B1 antibody (55004-1-AP; 1:1000; incubated at room temperature for 1.5 hours) with sh-Control and sh-Cyclin B1 transfected HeLa cells.