

À des fins de recherche uniquement

Anticorps Polyclonal de lapin anti-HTRA1



Numéro de catalogue: 55011-1-AP

10 Publications

Informations de base

Numéro de catalogue:

55011-1-AP

Taille:

150ul, Concentration: 750 µg/ml by Nanodrop;

Hôte:

Lapin

Isotype:

IgG

Numéro d'acquisition GenBank:

NM_002775

Identification du gène (NCBI):

5654

Nom complet:

HtrA serine peptidase 1

MW calculé

51 kDa

MW observés:

35 kDa, 50 kDa, 42 kDa

Méthode de purification:

Purification par affinité contre l'antigène

Dilutions recommandées:

WB 1:500-1:2000

IP 0.5-4.0 µg for IP and 1:500-1:1000 for WB

IHC 1:50-1:500

IF 1:10-1:100

Applications

Applications testées:

IF, IHC, IP, WB, ELISA

Demandes citées:

IF, IHC, WB

Spécificité de l'espèce:

Humain, rat, souris

Espèces citées:

Humain, poisson-zèbre, rat, souris

Contrôles positifs:

WB : cellules L02, cellules HepG2, tissu cérébral de souris

IP : cellules L02,

IHC : tissu placentaire humain,

IF : cellules HepG2,

Remarque-IHC: il est suggéré de démasquer l'antigène avec un tampon de TE buffer pH 9.0; (*) À défaut, le démasquage de l'antigène peut être effectué avec un tampon citrate pH 6,0.

Informations générales

HTRA1, also named as HTRA, PRSS11 and L56, belongs to the peptidase S1B family. It is a protease that regulates the availability of nsulin-like growth factors (IGFs) by cleaving IGF-binding proteins. HTRA1 represses signaling by TGF-beta family members. Variations in the promoter region of HTRA1 are the cause of susceptibility to age-related macular degeneration type 7 (ARMD7). Defects in HTRA1 are the cause of cerebral autosomal recessive arteriopathy with subcortical infarcts and leukoencephalopathy (CARASIL). The 50 kDa HTRA1 was found at varying levels in the majority samples tested, whereas the 42 kDa form of HTRA1 was identified in degenerated intervertebral disc protein samples (PMID:22556410). The short truncated monomer 37 kDa and dimer 74 kDa are proved (PMID:25329061). The antibody is specific to HTRA1.

Publications notables

Autrice	Pubmed ID	Journal	Application
Yoshihito Oura	30273602	Am J Pathol	IHC,WB
Sandeep Kumar	28941979	Am J Pathol	IHC
Hong Xiang	29163548	Front Immunol	WB,IF

Stockage

Stockage:

Stocker à -20°C. Stable pendant un an après l'expédition.

Tampon de stockage:

PBS avec azoture de sodium à 0,02 % et glycérol à 50 % pH 7,3

L'aliquotage n'est pas nécessaire pour le stockage à -20C

*** Les 20ul contiennent 0,1% de BSA.

For technical support and original validation data for this product please contact:

T: 1 (888) 4PTGLAB (1-888-478-4522) (toll free in USA), or 1(312) 455-8498 (outside USA)

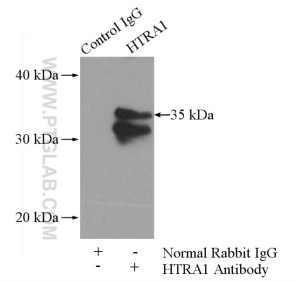
E: proteintech@ptglab.com
W: ptglab.com

This product is exclusively available under Proteintech Group brand and is not available to purchase from any other manufacturer.

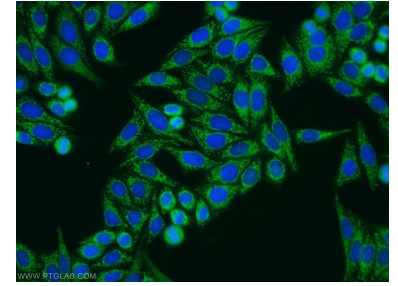
Données de validation sélectionnées



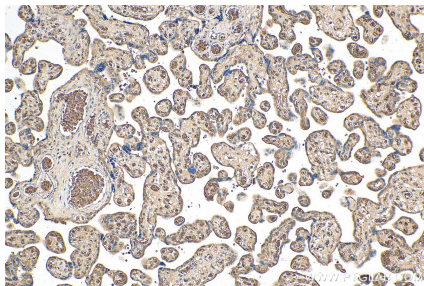
L02 cells were subjected to SDS PAGE followed by western blot with 55011-1-AP (HTRA1 antibody) at dilution of 1:600 incubated at room temperature for 1.5 hours.



IP Result of anti-HTRA1 (IP:55011-1-AP, 4ug; Detection:55011-1-AP 1:500) with L02 cells lysate 1400ug.



Immunofluorescent analysis of HepG2 cells using 55011-1-AP (HTRA1 antibody) at dilution of 1:25 and Alexa Fluor 488-conjugated AffiniPure Goat Anti-Rabbit IgG(H+L).



Immunohistochemical analysis of paraffin-embedded human placenta tissue slide using 55011-1-AP (HTRA1 antibody) at dilution of 1:200 (under 10x lens). Heat mediated antigen retrieval with Tris-EDTA buffer (pH 9.0).