

À des fins de recherche uniquement

# Anticorps Polyclonal de lapin anti-Annexin A1



Numéro de catalogue: 55018-1-AP

8 Publications

## Informations de base

Numéro de catalogue:

55018-1-AP

Taille:

150ul, Concentration: 300 µg/ml by Nanodrop and 260 µg/ml by Bradford method using BSA as the standard;

Hôte:

Lapin

Isotype:

IgG

Numéro d'acquisition GenBank:

NM\_000700

Identification du gène (NCBI):

301

Nom complet:

annexin A1

MW calculé

40 kDa

MW observés:

39 kDa

Méthode de purification:

Purification par affinité contre l'antigène

Dilutions recommandées:

WB 1:500-1:2000

IHC 1:20-1:200

## Applications

Applications testées:

FC, IHC, WB, ELISA

Demandes citées:

IF, IHC, WB

Spécificité de l'espèce:

Humain, rat, souris

Espèces citées:

Humain, singe, souris

**Remarque-IHC: il est suggéré de démasquer l'antigène avec un tampon de TE buffer pH 9,0; (\*) À défaut, le démasquage de l'antigène peut être effectué avec un tampon citrate pH 6,0.**

Contrôles positifs:

WB : cellule C2C12, cellules C6, cellules HeLa, cellules HepG2, cellules K-562, cellules NIH/3T3

IHC : tissu œsophagien humain, tissu de côlon humain

## Informations générales

ANXA1, also named as ANX1, LPC1 and p35, belongs to the annexin family. It is a member of the annexin family of Ca<sup>2+</sup>-binding and phospholipid-binding proteins, and it is particularly abundant in various populations of peripheral blood leukocytes. ANXA1 regulates phospholipase A2 activity. It seems to bind from two to four calcium ions with high affinity. ANXA1 is a pleiotrophic protein produced by many cell types including peripheral blood leucocytes. The antibody is specific to ANXA1.

## Publications notables

Autrice	Pubmed ID	Journal	Application
Peng Huang	27833268	Mediators Inflamm	WB, IF
Biaoxue Rong	25360220	Am J Transl Res	IHC
Rong Biaoxue	25300907	Expert Rev Mol Diagn	

## Stockage

Stockage:

Stocker à -20 °C

Tampon de stockage:

PBS avec azoture de sodium à 0,02 % et glycérol à 50 % pH 7,3

L'aliquotage n'est pas nécessaire pour le stockage à -20C

\*\*\* Les 20ul contiennent 0,1% de BSA.

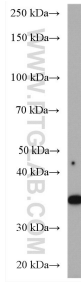
For technical support and original validation data for this product please contact:

T: 1 (888) 4PTGLAB (1-888-478-4522) (toll free in USA), or 1(312) 455-8498 (outside USA)

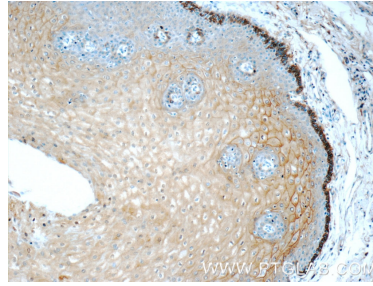
E: proteintech@ptglab.com  
W: ptglab.com

This product is exclusively available under Proteintech Group brand and is not available to purchase from any other manufacturer.

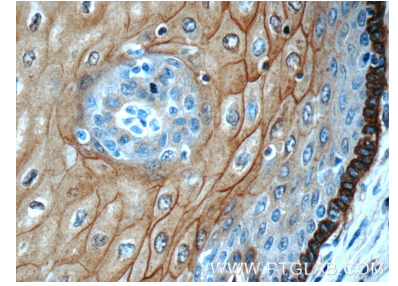
## Données de validation sélectionnées



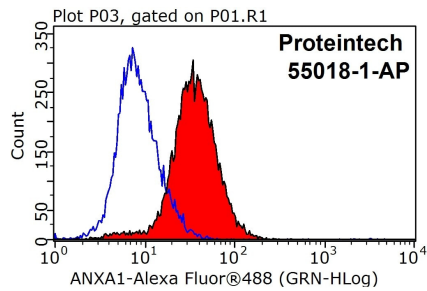
C2C12 cell were subjected to SDS PAGE followed by western blot with 55018-1-AP (Annexin A1 antibody) at dilution of 1:1000 incubated at room temperature for 1.5 hours.



Immunohistochemical analysis of paraffin-embedded human oesophagus tissue slide using 55018-1-AP (Annexin A1 antibody at dilution of 1:50 (under 10x lens).



Immunohistochemical analysis of paraffin-embedded human oesophagus tissue slide using 55018-1-AP (Annexin A1 antibody at dilution of 1:50 (under 40x lens).



1X10<sup>6</sup> HeLa cells were stained with 0.2ug Annexin A1 antibody (55018-1-AP, red) and control antibody (blue). Fixed with 90% MeOH blocked with 3% BSA (30 min). Alexa Fluor 488-conjugated AffiniPure Goat Anti-Rabbit IgG(H+L) with dilution 1:1000.