

À des fins de recherche uniquement

# Anticorps Polyclonal de lapin anti-PFKM



Numéro de catalogue: 55028-1-AP

Phare

47 Publications

## Informations de base

Numéro de catalogue:

55028-1-AP

Taille:

150ul, Concentration: 600 µg/ml by Nanodrop and 527 µg/ml by Bradford method using BSA as the standard;

Hôte:

Lapin

Isotype:

IgG

Numéro d'acquisition GenBank:

NM\_000289

Identification du gène (NCBI):

5213

Nom complet:

phosphofructokinase, muscle

MW calculé

85 kDa

MW observés:

75-85 kDa

Méthode de purification:

Purification par affinité contre l'antigène

Dilutions recommandées:

WB 1:2000-1:16000

IP 0.5-4.0 ug for IP and 1:500-1:3000 for WB

IHC 1:20-1:200

IF 1:10-1:100

## Applications

Applications testées:

IF, IHC, IP, WB, ELISA

Demandes citées:

IF, IHC, IP, WB

Spécificité de l'espèce:

Humain, rat, souris

Espèces citées:

bovin, Humain, porc, rat, souris

**Remarque-IHC: il est suggéré de démasquer l'antigène avec un tampon de TE buffer pH 9,0; (\*) À défaut, le démasquage de l'antigène peut être effectué avec un tampon citrate pH 6,0.**

Contrôles positifs:

WB : cellules HeLa, cellules HEK-293, cellules HepG2, tissu cardiaque de rat, tissu cardiaque de souris, tissu cérébral humain, tissu de muscle squelettique humain

IP : tissu de muscle squelettique de souris, tissu hépatique de souris

IHC : tissu de muscle squelettique humain,

IF : cellules HeLa,

## Informations générales

PFKM, also named as GSD7, PFK-1, PFK-M and PFKX, belongs to the phosphofructokinase family and Two domains subfamily. PFKM catalyze the reaction: ATP + D-fructose 6-phosphate = ADP + D-fructose 1,6-bisphosphate. It is a key regulatory enzyme in glycolysis. Defects in PFKM are the cause of glycogen storage disease type 7 (GSD7). PFKM has three isoforms with molecular mass of 85, 82 and 93 kDa. The antibody is specific to PFKM.

## Publications notables

Autrice	Pubmed ID	Journal	Application
Wei Xu	32935679	Food Funct	WB
Yanling Gou	36069580	Immunology	IHC
Yu Zhu	36052731	ACS Appl Mater Interfaces	WB

## Stockage

Stockage:

Stocker à -20°C. Stable pendant un an après l'expédition.

Tampon de stockage:

PBS avec azoture de sodium à 0,02 % et glycérol à 50 % pH 7,3

L'aliquotage n'est pas nécessaire pour le stockage à -20C

\*\*\* Les 20ul contiennent 0,1% de BSA.

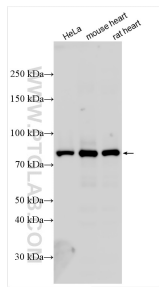
For technical support and original validation data for this product please contact:

T: 1 (888) 4PTGLAB (1-888-478-4522) (toll free in USA), or 1(312) 455-8498 (outside USA)

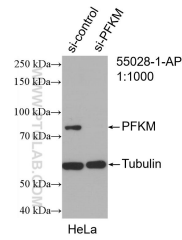
E: proteintech@ptglab.com  
W: ptglab.com

This product is exclusively available under Proteintech Group brand and is not available to purchase from any other manufacturer.

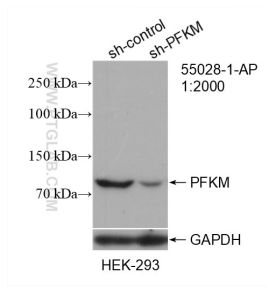
## Données de validation sélectionnées



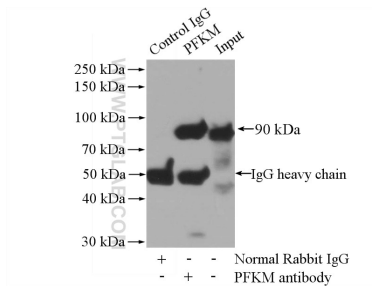
Various lysates were subjected to SDS PAGE followed by western blot with 55028-1-AP (PFKM antibody) at dilution of 1:8000 incubated at room temperature for 1.5 hours.



WB result of PFKM antibody (55028-1-AP; 1:1000; incubated at room temperature for 1.5 hours) with sh-Control and sh-PFKM transfected HeLa cells.



WB result of PFKM antibody (55028-1-AP; 1:2000; incubated at room temperature for 1.5 hours) with sh-Control and sh-PFKM transfected HEK-293 cells.



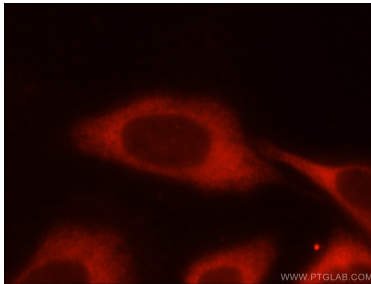
IP Result of anti-PFKM (IP:55028-1-AP, 4ug; Detection:55028-1-AP 1:1500) with mouse skeletal muscle tissue lysate 2200ug.



Immunohistochemical analysis of paraffin-embedded human skeletal muscle tissue slide using 55028-1-AP (PFKM Antibody) at dilution of 1:50 (under 10x lens).



Immunohistochemical analysis of paraffin-embedded human skeletal muscle tissue slide using 55028-1-AP (PFKM Antibody) at dilution of 1:50 (under 40x lens).



Immunofluorescent analysis of HeLa cells using 55028-1-AP (PFKM antibody) at dilution of 1:25 and Rhodamine-Goat anti-Rabbit IgG.