

À des fins de recherche uniquement

Anticorps Polyclonal de lapin anti-CDC25A



Numéro de catalogue: 55031-1-AP

Phare

26 Publications

Informations de base

Numéro de catalogue:

55031-1-AP

Taille:

150ul, Concentration: 500 µg/ml by Nanodrop and 533 µg/ml by Bradford method using BSA as the standard;

Hôte:

Lapin

Isotype:

IgG

Numéro d'acquisition GenBank:

NM_001789

Identification du gène (NCBI):

993

Nom complet:

cell division cycle 25 homolog A (S. pombe)

MW calculé

59 kDa

MW observés:

60 kDa

Méthode de purification:

Purification par affinité contre l'antigène

Dilutions recommandées:

WB 1:500-1:3000

IP 0.5-4.0 ug for IP and 1:200-1:1000 for WB

IHC 1:50-1:500

IF 1:50-1:500

Applications

Applications testées:

IF, IHC, IP, WB, ELISA

Demandes citées:

IF, IHC, IP, WB

Spécificité de l'espèce:

Humain, souris

Espèces citées:

Humain, souris

Contrôles positifs:

WB : cellules HepG2, tissu hépatique de souris

IP : cellules HeLa,

IHC : tissu de cancer du sein humain, tissu de gliome humain

IF : tissu de cancer du sein humain,

Remarque-IHC: il est suggéré de démasquer l'antigène avec un tampon de TE buffer pH 9,0; (*) À défaut, le démasquage de l'antigène peut être effectué avec un tampon citrate pH 6,0.

Informations générales

CDC25A belongs to the MPI phosphatase family. It is a tyrosine protein phosphatase which functions as a dosage-dependent inducer of mitotic progression. CDC25A directly dephosphorylates CDC2 and stimulates its kinase activity. It also dephosphorylates CDK2 in complex with cyclin E, in vitro. CDC25A overexpression in human cancers might contribute to tumorigenesis. This protein can be phosphorylated to reveal the molecular weight from 55 kDa to 70 kDa (PMID:21376736; 8156993). The antibody is specific to CDC25A.

Publications notables

| Autrice | Pubmed ID | Journal | Application |
|----------------|-----------|--------------------|-------------|
| Hang Li | 32943060 | Cell Commun Signal | WB,IHC |
| Yonglong Zhang | 31599189 | Cell Cycle | WB |
| Jinliang Wu | 27880067 | Cell Cycle | WB |

Stockage

Stockage:

Stocker à -20°C. Stable pendant un an après l'expédition.

Tampon de stockage:

NaHCO₃ 0,1 M, glycine 0,1 M, azoture de sodium à 0,02 % et glycérol à 50 %, pH 7,3.

L'aliquotage n'est pas nécessaire pour le stockage à -20C

*** Les 20ul contiennent 0,1% de BSA.

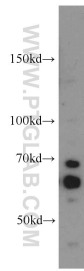
For technical support and original validation data for this product please contact:

T: 1 (888) 4PTGLAB (1-888-478-4522) (toll free in USA), or 1(312) 455-8498 (outside USA)

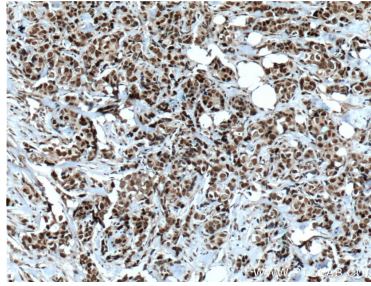
E: proteintech@ptglab.com
W: ptglab.com

This product is exclusively available under Proteintech Group brand and is not available to purchase from any other manufacturer.

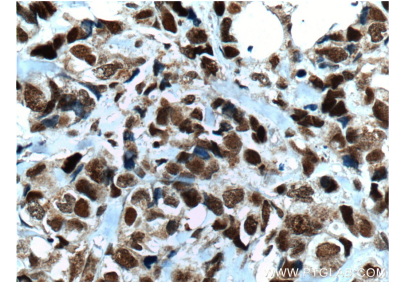
Données de validation sélectionnées



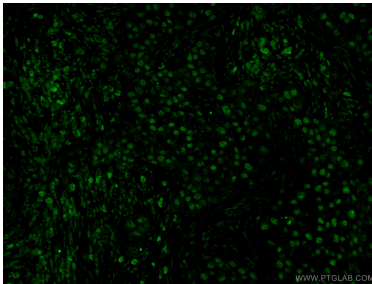
HepG2 cells were subjected to SDS PAGE followed by western blot with 55031-1-AP (CDC25A antibody) at dilution of 1:1500 incubated at room temperature for 1.5 hours.



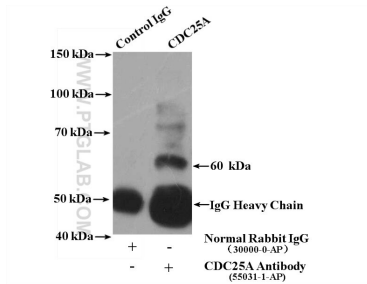
Immunohistochemical analysis of paraffin-embedded human breast cancer tissue slide using 55031-1-AP (CDC25A Antibody) at dilution of 1:200 (under 10x lens). Heat mediated antigen retrieval with Tris-EDTA buffer (pH 9.0).



Immunohistochemical analysis of paraffin-embedded human breast cancer tissue slide using 55031-1-AP (CDC25A Antibody) at dilution of 1:200 (under 40x lens). Heat mediated antigen retrieval with Tris-EDTA buffer (pH 9.0).



Immunofluorescent analysis of (4% PFA) fixed human breast cancer tissue using 55031-1-AP (CDC25A antibody) at dilution of 1:50 and Alexa Fluor 488-conjugated AffiniPure Goat Anti-Rabbit IgG(H+L).



IP Result of anti-CDC25A (IP:55031-1-AP, 4ug; Detection:55031-1-AP 1:300) with HeLa cells lysate 4000ug.