

À des fins de recherche uniquement

Anticorps Polyclonal de lapin anti-SOS1



Numéro de catalogue: 55041-1-AP

2 Publications

Informations de base

Numéro de catalogue:

55041-1-AP

Taille:

150ul, Concentration: 1200 µg/ml by Nanodrop and 493 µg/ml by Bradford method using BSA as the standard;

Hôte:

Lapin

Isotype:

IgG

Numéro d'acquisition GenBank:

NM_005633

Identification du gène (NCBI):

6654

Nom complet:

son of sevenless homolog 1 (Drosophila)

MW calculé

152 kDa

MW observés:

152 kDa

Méthode de purification:

Purification par affinité contre l'antigène

Dilutions recommandées:

WB 1:500-1:1000

IP 0.5-4.0 ug for IP and 1:500-1:1000 for WB

IHC 1:50-1:500

IF 1:50-1:500

Applications

Applications testées:

IF, IHC, IP, WB, ELISA

Demandes citées:

WB

Spécificité de l'espèce:

Humain, rat, souris

Espèces citées:

Humain

Contrôles positifs:

WB : cellules K-562, tissu cérébral de souris

IP : tissu cérébral de souris,

IHC : tissu de côlon de souris, tissu de cancer du poumon humain

IF : cellules HeLa,

Remarque-IHC: il est suggéré de démasquer l'antigène avec un tampon de TE buffer pH 9,0; (*) À défaut, le démasquage de l'antigène peut être effectué avec un tampon citrate pH 6,0.

Informations générales

SOS1 promotes the exchange of Ras-bound GDP by GTP. EPS8, E3B1 and SOS1 form a tricomplex in vivo that exhibits RAC-specific guanine nucleotide exchange factor activity in vitro. Defects in SOS1 are the cause of gingival fibromatosis 1 (GGF1). Defects in SOS1 are the cause of Noonan syndrome type 4 (NS4). The antibody is specific to SOS1.

Publications notables

Autrice	Pubmed ID	Journal	Application
Damian Kotat	35563688	Cells	WB
Qiwei Jiang	37294756	Sci Adv	WB

Stockage

Stockage:

Stocker à -20°C. Stable pendant un an après l'expédition.

Tampon de stockage:

NaHCO₃ 0,1 M, glycine 0,1 M, azoture de sodium à 0,02 % et glycérol à 50 %, pH 7,3.

L'aliquotage n'est pas nécessaire pour le stockage à -20C

*** Les 20ul contiennent 0,1% de BSA.

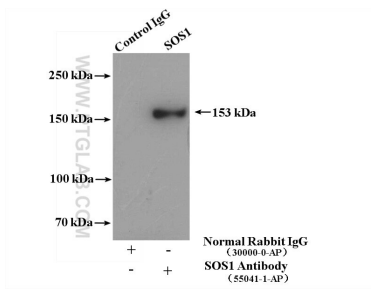
For technical support and original validation data for this product please contact:

T: 1 (888) 4PTGLAB (1-888-478-4522) (toll free in USA), or 1(312) 455-8498 (outside USA)

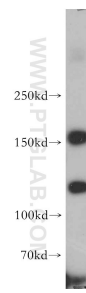
E: proteintech@ptglab.com
W: ptglab.com

This product is exclusively available under Proteintech Group brand and is not available to purchase from any other manufacturer.

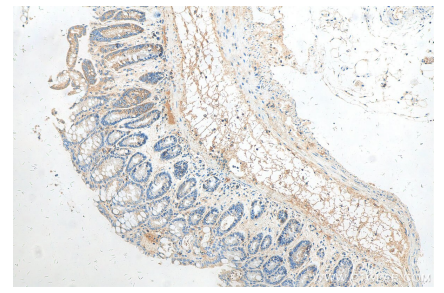
Données de validation sélectionnées



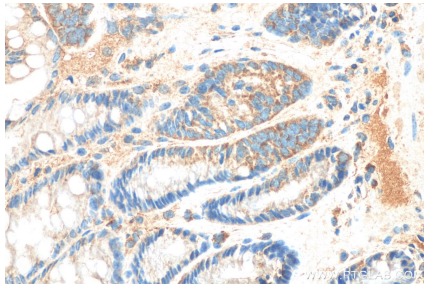
IP Result of anti-SOS1 (IP:55041-1-AP, 4ug; Detection:55041-1-AP 1:500) with mouse brain tissue lysate 4000ug.



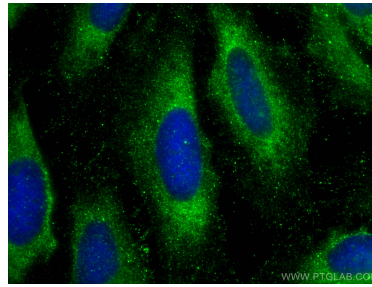
K-562 cells were subjected to SDS PAGE followed by western blot with 55041-1-AP (SOS1 antibody) at dilution of 1:500 incubated at room temperature for 1.5 hours.



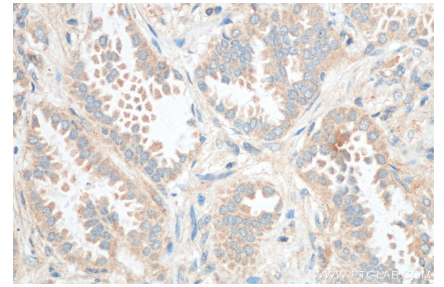
Immunohistochemical analysis of paraffin-embedded mouse colon tissue slide using 55041-1-AP (SOS1 antibody) at dilution of 1:200 (under 10x lens). Heat mediated antigen retrieval with Tris-EDTA buffer (pH 9.0).



Immunohistochemical analysis of paraffin-embedded mouse colon tissue slide using 55041-1-AP (SOS1 antibody) at dilution of 1:200 (under 40x lens). Heat mediated antigen retrieval with Tris-EDTA buffer (pH 9.0).



Immunofluorescent analysis of (-20°C Ethanol) fixed HeLa cells using SOS1 antibody (55041-1-AP) at dilution of 1:200 and CoraLite®488-Conjugated AffiniPure Goat Anti-Rabbit IgG(H+L).



Immunohistochemical analysis of paraffin-embedded human lung cancer tissue slide using 55041-1-AP (SOS1 antibody) at dilution of 1:200 (under 40x lens). Heat mediated antigen retrieval with Tris-EDTA buffer (pH 9.0).