

À des fins de recherche uniquement

Anticorps Polyclonal de lapin anti-Toca 1



Numéro de catalogue: 55055-1-AP

Informations de base

Numéro de catalogue: 55055-1-AP	Numéro d'acquisition GenBank: NM_017737	Méthode de purification: Purification par affinité contre l'antigène
Taille: 150ul , Concentration: 400 µg/ml by Nanodrop and 300 µg/ml by Bradford method using BSA as the standard;	Identification du gène (NCBI): 54874	Dilutions recommandées: WB 1:500-1:1000
Hôte: Lapin	Nom complet: formin binding protein 1-like	
Isotype: IgG	MW calculé: 70 kDa	
	MW observés: 63-75 kDa	

Applications

Applications testées: WB, ELISA	Contrôles positifs: WB : tissu cérébral de souris,
Spécificité de l'espèce: Humain, rat, souris	

Informations générales

Toca-1, also named as FNBP1L or C1orf39, belongs to the FNBP1 family. It is required to coordinate membrane tubulation with reorganization of the actin cytoskeleton during endocytosis. Toca-1 may bind to lipids such as phosphatidylinositol 4,5-bisphosphate and phosphatidylserine and promote membrane invagination and the formation of tubules. Also promotes CDC42-induced actin polymerization by activating the WASL/N-WASP-WASPIP/WIP complex, the predominant form of WASL/N-WASP in cells. The antibody is specific to Toca-1.

Stockage

Stockage:
Stocker à -20 °C.
Tampon de stockage:
PBS avec azoture de sodium à 0,02 % et glycérol à 50 % pH 7,3
L'aliquotage n'est pas nécessaire pour le stockage à -20C

***** Les 20ul contiennent 0,1% de BSA.**

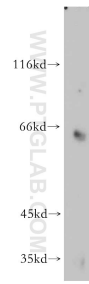
For technical support and original validation data for this product please contact:

T: 1 (888) 4PTGLAB (1-888-478-4522) (toll free in USA), or 1(312) 455-8498 (outside USA)

E: proteintech@ptglab.com
W: ptglab.com

This product is exclusively available under Proteintech Group brand and is not available to purchase from any other manufacturer.

Données de validation sélectionnées



mouse brain tissue were subjected to SDS PAGE followed by western blot with 55055-1-AP (Toca 1 antibody) at dilution of 1:300 incubated at room temperature for 1.5 hours.