

À des fins de recherche uniquement

Anticorps Polyclonal de lapin anti-SHANK1



Numéro de catalogue: 55059-1-AP

2 Publications

Informations de base

Numéro de catalogue:

55059-1-AP

Numéro d'acquisition GenBank:

NM_016148

Méthode de purification:

Purification par affinité contre l'antigène

Taille:

150ul, Concentration: 1000 µg/ml by Nanodrop and 420 µg/ml by Bradford method using BSA as the standard;

Identification du gène (NCBI):

50944

Dilutions recommandées:

WB 1:500-1:1000

IF 1:50-1:500

Hôte:

Lapin

Nom complet:

SH3 and multiple ankyrin repeat domains 1

MW calculé

225 kDa

MW observés:

159-225 kDa

Isotype:

IgG

Applications

Applications testées:

IF, WB, ELISA

Demandes citées:

WB

Spécificité de l'espèce:

Humain, rat, souris

Espèces citées:

rat, souris

Contrôles positifs:

WB : cellules HEK-293T, cellules Neuro-2a

IF : tissu oculaire de souris,

Informations générales

SHANK1 belongs to the SHANK family. It seems to be an adapter protein in the postsynaptic density (PSD) of excitatory synapses that interconnects receptors of the postsynaptic membrane including NMDA-type and metabotropic glutamate receptors via complexes with GKAP/PSD-95 and Homer, respectively, and the actin-based cytoskeleton. SHANK1 may play a role in the structural and functional organization of the dendritic spine and synaptic junction. The antibody is specific to SHANK1.

Publications notables

Autrice	Pubmed ID	Journal	Application
Zeyu Zhang	30297870	Cell Res	WB
Shan Hui	29171433	Neural Regen Res	WB

Stockage

Stockage:

Stocker à -20°C. Stable pendant un an après l'expédition.

Tampon de stockage:

PBS avec azoture de sodium à 0,02 % et glycérol à 50 % pH 7,3

L'aliquotage n'est pas nécessaire pour le stockage à -20C

*** Les 20ul contiennent 0,1% de BSA.

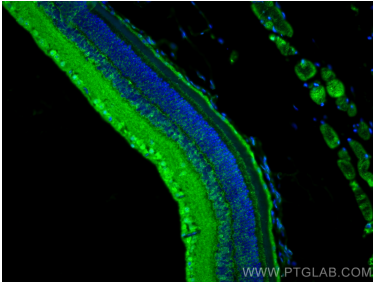
For technical support and original validation data for this product please contact:

T: 1 (888) 4PTGLAB (1-888-478-4522) (toll free in USA), or 1(312) 455-8498 (outside USA)

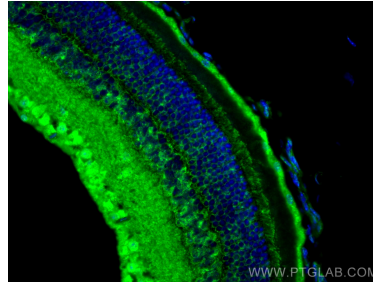
E: proteintech@ptglab.com
W: ptglab.com

This product is exclusively available under Proteintech Group brand and is not available to purchase from any other manufacturer.

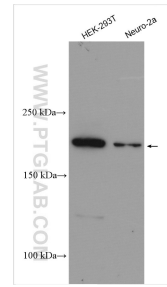
Données de validation sélectionnées



Immunofluorescent analysis of (4% PFA) fixed mouse eye tissue using SHANK1 antibody (55059-1-AP) at dilution of 1:200 and CoraLite®488-Conjugated AffiniPure Goat Anti-Rabbit IgG(H+L).



Immunofluorescent analysis of (4% PFA) fixed mouse eye tissue using SHANK1 antibody (55059-1-AP) at dilution of 1:200 and CoraLite®488-Conjugated AffiniPure Goat Anti-Rabbit IgG(H+L).



Various lysates were subjected to SDS PAGE followed by western blot with 55059-1-AP (SHANK1 antibody) at dilution of 1:800 incubated at room temperature for 1.5 hours.