

À des fins de recherche uniquement

Anticorps Polyclonal de lapin anti-MTCO2



Numéro de catalogue: 55070-1-AP

Phare

95 Publications

Informations de base

Numéro de catalogue:

55070-1-AP

Taille:

150ul, Concentration: 750 µg/ml by Nanodrop;

Hôte:

Lapin

Isotype:

IgG

Numéro d'acquisition GenBank:

YP_003024029

Identification du gène (NCBI):

4513

Nom complet:

cytochrome c oxidase II

MW calculé

26 kDa

MW observés:

23-26 kDa

Méthode de purification:

Purification par affinité contre l'antigène

Dilutions recommandées:

WB 1:2000-1:12000

IP 0.5-4.0 ug for IP and 1:500-1:2000 for WB

IHC 1:4000-1:16000

IF 1:50-1:500

Applications

Applications testées:

FC, IF, IHC, IP, WB, ELISA

Demandes citées:

IF, IHC, IP, WB

Spécificité de l'espèce:

Humain, rat, souris

Espèces citées:

Humain, poisson-zèbre, rat, singe, souris, Hamster

Remarque-IHC: il est suggéré de démasquer

l'antigène avec un tampon de TE buffer pH

9.0; (*) À défaut, le démasquage de

l'antigène peut être effectué avec un

tampon citrate pH 6,0.

Contrôles positifs:

WB : cellules A431, cellules HeLa, cellules MCF-7, échantillons divers, tissu cardiaque de rat, tissu cardiaque de souris, tissu hépatique de souris

IP : cellules HeLa,

IHC : tissu de cancer du côlon humain,

IF : cellules HepG2,

Informations générales

COX2, also named as COII, COXII and MTCO2, belongs to the cytochrome c oxidase subunit 2 family. It is the component of the respiratory chain that catalyzes the reduction of oxygen to water. Subunits 1-3 form the functional core of the enzyme complex. Subunit 2 transfers the electrons from cytochrome c via its binuclear copper A center to the bimetallic center of the catalytic subunit 1. Defects in COX2 are a cause of mitochondrial complex IV deficiency (MT-C4D). The antibody is specific to COX2.

Publications notables

Autrice	Pubmed ID	Journal	Application
Q E Xie	34571250	Mitochondrion	WB
Esther Paulo	34551310	Cell Rep	WB
Ya-Ling Yang	32961796	Int J Mol Sci	WB

Stockage

Stockage:

Stocker à -20°C. Stable pendant un an après l'expédition.

Tampon de stockage:

PBS avec azoture de sodium à 0,02 % et glycérol à 50 % pH 7,3

L'aliquotage n'est pas nécessaire pour le stockage à -20C

*** Les 20ul contiennent 0,1% de BSA.

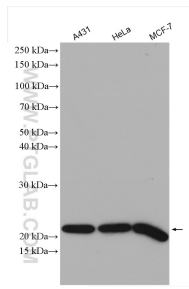
For technical support and original validation data for this product please contact:

T: 1 (888) 4PTGLAB (1-888-478-4522) (toll free in USA), or 1(312) 455-8498 (outside USA)

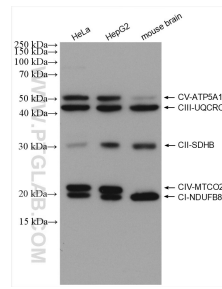
E: proteintech@ptglab.com
W: ptglab.com

This product is exclusively available under Proteintech Group brand and is not available to purchase from any other manufacturer.

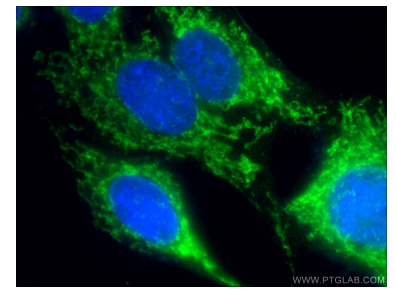
Données de validation sélectionnées



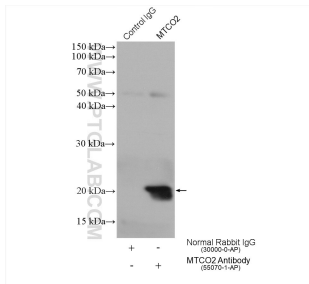
Various lysates were subjected to SDS PAGE followed by western blot with 55070-1-AP (MTCO2 antibody) at dilution of 1:6000 incubated at room temperature for 1.5 hours.



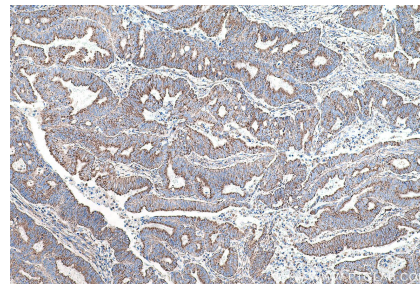
These five antibodies, ATP5A1 (14676-1-AP, 1:8000), UQCRC2 (14742-1-AP, 1:4000), SDHB (10620-1-AP, 1:8000), MTCO2 (55070-1-AP, 1:1000), NDUFB8 (14794-1-AP, 1:5000), can be assembled OXPHOS kit to detect the relative levels of the 5 OXPHOS complexes in mitochondrial preparations.



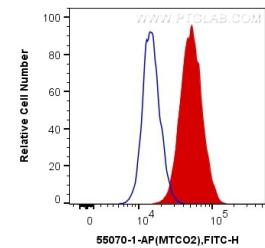
Immunofluorescent analysis of (-20°C Ethanol) fixed HepG2 cells using 55070-1-AP (MTCO2 antibody) at dilution of 1:50 and Alexa Fluor 488-conjugated AffiniPure Goat Anti-Rabbit IgG(H+L).



IP result of anti-MTCO2(IP:55070-1-AP, 4ug; Detection:55070-1-AP 1:1000) with HeLa cells lysate 1880 ug.



Immunohistochemical analysis of paraffin-embedded human colon cancer tissue slide using 55070-1-AP (MTCO2 antibody) at dilution of 1:8000 (under 10x lens). Heat mediated antigen retrieval with Tris-EDTA buffer (pH 9.0).



1×10^6 A431 cells were intracellularly stained with 0.4 ug Anti-Human MTCO2 (55070-1-AP) and CoraLite®488-Conjugated AffiniPure Goat Anti-Rabbit IgG(H+L) at dilution 1:1000 (red), or 0.4 ug Control Antibody. Cells were fixed with 4% PFA and permeabilized with Flow Cytometry Perm Buffer (PF00011-C).