

À des fins de recherche uniquement

Anticorps Polyclonal de lapin anti-SAP 97



Numéro de catalogue: 55085-1-AP

1 Publications

Informations de base

Numéro de catalogue: 55085-1-AP	Numéro d'acquisition GenBank: NM_004087	Méthode de purification: Purification par affinité contre l'antigène
Taille: 150ul, Concentration: 300 µg/ml by Nanodrop and 267 µg/ml by Bradford method using BSA as the standard;	Identification du gène (NCBI): 1739	Dilutions recommandées: WB 1:200-1:1000
Hôte: Lapin	Nom complet: discs, large homolog 1 (Drosophila)	
Isotype: IgG	MW calculé: 100 kDa	
	MW observés: 120 kDa, 130-140 kDa	

Applications

Applications testées: WB, ELISA	Contrôles positifs: WB : tissu pulmonaire de souris, cellules HeLa
Demandes citées: IF	
Spécificité de l'espèce: Humain, rat, souris	
Espèces citées: Humain, souris	

Informations générales

DLG1, also named as SAP97, hDlg and DLGH1, belongs to the MAGUK family. It is essential multidomain scaffolding protein required for normal development. DLG1 may play a role in adherens junction assembly, signal transduction, cell proliferation, synaptogenesis and lymphocyte activation. It regulates the excitability of cardiac myocytes by modulating the functional expression of Kv4 channels. DLG1 is a functional regulator of Kv1.5 channel. The DLG1-MPP7 complex promotes epithelial cell polarity and tight junction formation. The antibody is specific to DLG1.

Publications notables

Autrice	Pubmed ID	Journal	Application
Rik Westland	26352300	Kidney Int	IF

Stockage

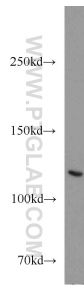
Stockage:
Stocker à -20 °C.
Tampon de stockage:
NaHCO₃ 0,1 M, glycine 0,1 M, azotate de sodium à 0,02 % et glycérol à 50 %, pH 7,3.
L'aliquotage n'est pas nécessaire pour le stockage à -20C

*** Les 20ul contiennent 0,1% de BSA.

For technical support and original validation data for this product please contact:
T: 1 (888) 4PTGLAB (1-888-478-4522) (toll free in USA), or 1(312) 455-8498 (outside USA)
E: proteintech@ptglab.com
W: ptglab.com

This product is exclusively available under Proteintech Group brand and is not available to purchase from any other manufacturer.

Données de validation sélectionnées



mouse lung tissue were subjected to SDS PAGE followed by western blot with 55085-1-AP (DLG1 antibody) at dilution of 1:300 incubated at room temperature for 1.5 hours.