

À des fins de recherche uniquement

Anticorps Polyclonal de lapin anti-PTCH2



Numéro de catalogue: 55091-1-AP

3 Publications

Informations de base

Numéro de catalogue: 55091-1-AP	Numéro d'acquisition GenBank: NM_003738	Méthode de purification: Purification par affinité contre l'antigène
Taille: 150ul , Concentration: 300 µg/ml by Nanodrop and 300 µg/ml by Bradford method using BSA as the standard;	Identification du gène (NCBI): 8643	Dilutions recommandées: WB 1:500-1:1000
Hôte: Lapin	Nom complet: patched homolog 2 (Drosophila)	
Isotype: IgG	MW calculé: 131 kDa	
	MW observés: 131-140 kDa	

Applications

Applications testées: WB, ELISA	Contrôles positifs: WB : cellules HepG2, tissu cérébral humain
Demandes citées: WB	
Spécificité de l'espèce: Humain, rat, souris	
Espèces citées: Humain, rat, souris	

Informations générales

PTCH1 (patched homolog 1) and PTCH2 are twelve-pass transmembrane proteins that act receptors of Hedgehog signaling pathway (PMID: 8906794; 9811851). Signals of Hedgehog family proteins (SHH, IHH and DHH in humans) are transduced through Patched family receptors (PTCH1 and PTCH2) and Smoothened (SMO) to Gli family transcription factors. Hedgehog pathway plays a critical role in embryonic development and tissue homeostasis, and its dysregulation has been implicated in many human diseases including congenital disorder and cancer (PMID: 23719536; 23532857). PTCH2 may function as a tumor suppressor in the Hedgehog signaling pathway. Alterations in PTCH2 gene have been associated with nevoid basal cell carcinoma syndrome, basal cell carcinoma, medulloblastoma, and susceptibility to congenital macrostomia. This antibody is specific to PTCH2.

Publications notables

Autrice	Pubmed ID	Journal	Application
Xin Chen	35028532	iScience	WB
Ya-Dong Zhang	29244790	Exp Mol Med	WB
Qiuyao Wu	37142671	Cell Res	WB

Stockage

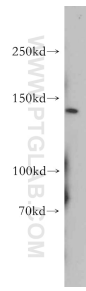
Stockage:
Stocker à -20 °C.
Tampon de stockage:
PBS avec azoture de sodium à 0,02 % et glycérol à 50 % pH 7,3
L'aliquotage n'est pas nécessaire pour le stockage à -20C

*** Les 20ul contiennent 0,1% de BSA.

For technical support and original validation data for this product please contact:
T: 1 (888) 4PTGLAB (1-888-478-4522) (toll free in USA), or 1(312) 455-8498 (outside USA)
E: proteintech@ptglab.com
W: ptglab.com

This product is exclusively available under Proteintech Group brand and is not available to purchase from any other manufacturer.

Données de validation sélectionnées



HepG2 cells were subjected to SDS PAGE followed by western blot with 55091-1-AP (PTCH2 antibody) at dilution of 1:500 incubated at room temperature for 1.5 hours.