

À des fins de recherche uniquement

# Anticorps Polyclonal de lapin anti-CDK3



Numéro de catalogue: 55103-1-AP

3 Publications

## Informations de base

Numéro de catalogue:

55103-1-AP

Taille:

150ul, Concentration: 800 µg/ml by Bradford method using BSA as the standard;

Hôte:

Lapin

Isotype:

IgG

Numéro d'acquisition GenBank:

NM\_001258

Identification du gène (NCBI):

1018

Nom complet:

cyclin-dependent kinase 3

MW calculé

35 kDa

MW observés:

40-45 kDa

Méthode de purification:

Purification par affinité contre l'antigène

Dilutions recommandées:

WB 1:1000-1:4000

IHC 1:100-1:400

## Applications

Applications testées:

FC, IHC, WB, ELISA

Demandes citées:

IHC, WB

Spécificité de l'espèce:

Humain, souris

Espèces citées:

Humain, souris

Contrôles positifs:

WB : tissu cérébral de souris, cellules Jurkat, cellules MCF-7, tissu cérébral de rat

IHC : tissu de cancer du sein humain,

**Remarque-IHC: il est suggéré de démasquer l'antigène avec un tampon de TE buffer pH 9,0; (\*) À défaut, le démasquage de l'antigène peut être effectué avec un tampon citrate pH 6,0.**

## Informations générales

CDK3 belongs to the protein kinase superfamily, CMGC Ser/Thr protein kinase family and CDC2/CDKX subfamily. It is probably involved in the control of the cell cycle. CDK3 interacts with a yet unknown type of cyclin. It can phosphorylate histone H1. Endogenous Cyclin C/Cdk3 complexes are critical to promote exit from quiescence in an Rb-dependent manner. Cyclin C/Cdk3 complexes is a key regulators of cell cycle reentry in human cells. (PMID: 15130482) The antibody is specific to CDK3.

## Publications notables

Autrice	Pubmed ID	Journal	Application
Wen Zhang	31214853	Protein J	WB
Ning Xu	35927229	Cell Death Discov	WB
Haoli Gong	37102261	Cancer Med	IHC

## Stockage

Stockage:

Stocker à -20 °C

Tampon de stockage:

NaHCO<sub>3</sub> 0,1 M, glycine 0,1 M, azoture de sodium à 0,02 % et glycérol à 50 %, pH 7,3.

L'aliquotage n'est pas nécessaire pour le stockage à -20C

\*\*\* Les 20ul contiennent 0,1% de BSA.

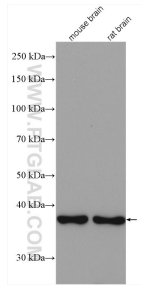
For technical support and original validation data for this product please contact:

T: 1 (888) 4PTGLAB (1-888-478-4522) (toll free in USA), or 1(312) 455-8498 (outside USA)

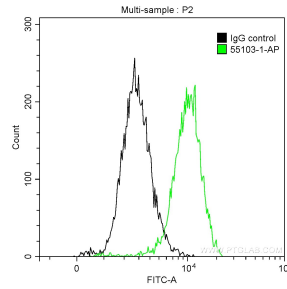
E: [proteintech@ptglab.com](mailto:proteintech@ptglab.com)  
W: [ptglab.com](http://ptglab.com)

This product is exclusively available under Proteintech Group brand and is not available to purchase from any other manufacturer.

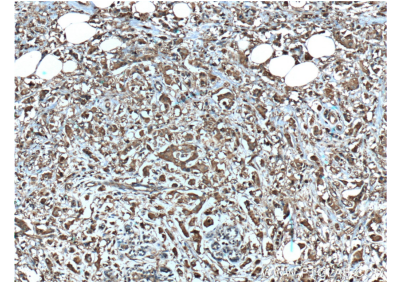
## Données de validation sélectionnées



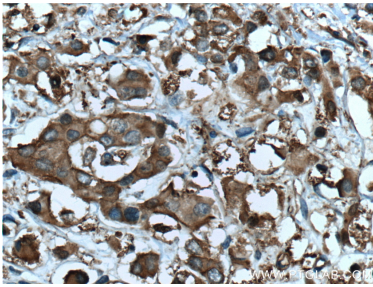
Various lysates were subjected to SDS PAGE followed by western blot with 55103-1-AP (CDK3 antibody) at dilution of 1:2000 incubated at room temperature for 1.5 hours.



$1 \times 10^6$  HeLa cells were intracellularly stained with 0.2 ug Anti-Human CDK3 (55103-1-AP) and CoraLite® 488-Conjugated AffiniPure Goat Anti-Rabbit IgG(H+L) at dilution 1:1000 (green), and 0.2 ug Control Antibody. Cells were fixed with 90% MeOH.



Immunohistochemical analysis of paraffin-embedded human breast cancer tissue slide using 55103-1-AP (CDK3 Antibody) at dilution of 1:200 (under 10x lens). Heat mediated antigen retrieval with Tris-EDTA buffer (pH 9.0).



Immunohistochemical analysis of paraffin-embedded human breast cancer tissue slide using 55103-1-AP (CDK3 Antibody) at dilution of 1:200 (under 40x lens). Heat mediated antigen retrieval with Tris-EDTA buffer (pH 9.0).