

À des fins de recherche uniquement

# Anticorps Polyclonal de lapin anti-MAGEA1



Numéro de catalogue: 55105-1-AP

## Informations de base

<b>Numéro de catalogue:</b> 55105-1-AP	<b>Numéro d'acquisition GenBank:</b> NM_004988	<b>Méthode de purification:</b> Purification par affinité contre l'antigène
<b>Taille:</b> 150ul , Concentration: 160 µg/ml by Nanodrop and 133 µg/ml by Bradford method using BSA as the standard;	<b>Identification du gène (NCBI):</b> 4100	<b>Dilutions recommandées:</b> WB 1:500-1:1000 IF 1:20-1:200
<b>Hôte:</b> Lapin	<b>Nom complet:</b> melanoma antigen family A, 1 (directs expression of antigen MZ2-E)	
<b>Isotype:</b> IgG	<b>MW calculé:</b> 34 kDa	
	<b>MW observés:</b> 46 kDa	

## Applications

<b>Applications testées:</b> IF, WB, ELISA	<b>Contrôles positifs:</b> WB : cellules A375, cellules MCF-7 IF : cellules A375,
<b>Spécificité de l'espèce:</b> Humain	

## Informations générales

MAGEA1, also named as CT1.1, MZ2-E, MAGE1 and MAGE1A, is the first gene reported to encode a CTL-defined human tumor antigen. It may play a role in embryonal development and tumor transformation or aspects of tumor progression. Antigen recognized on a melanoma by autologous cytolytic T-lymphocytes. MAGEA1 provided direct evidence for the power of the cDNA expression library as an effective strategy to identify genes encoding tumor antigens recognized by HLA-restricted T cells. (PMID:16951217) The antibody is specific to MAGEA1.

## Stockage

**Stockage:**  
Stocker à -20 °C.  
**Tampon de stockage:**  
PBS avec azoture de sodium à 0,02 % et glycérol à 50 % pH 7,3  
L'aliquotage n'est pas nécessaire pour le stockage à -20C

**\*\*\* Les 20ul contiennent 0,1% de BSA.**

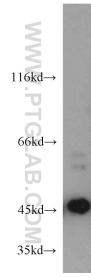
For technical support and original validation data for this product please contact:

T: 1 (888) 4PTGLAB (1-888-478-4522) (toll free in USA), or 1(312) 455-8498 (outside USA)

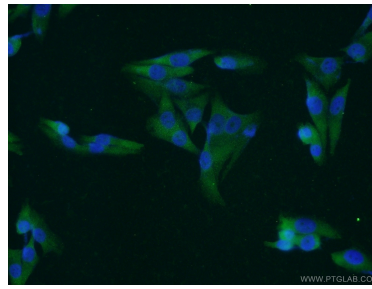
E: [proteintech@ptglab.com](mailto:proteintech@ptglab.com)  
W: [ptglab.com](http://ptglab.com)

This product is exclusively available under Proteintech Group brand and is not available to purchase from any other manufacturer.

## Données de validation sélectionnées



A375 cells were subjected to SDS PAGE followed by western blot with 55105-1-AP (MAGEA1 antibody) at dilution of 1:200 incubated at room temperature for 1.5 hours.



Immunofluorescent analysis of A375 cells using 55105-1-AP (MAGEA1 antibody) at dilution of 1:50 and Alexa Fluor 488-conjugated AffiniPure Goat Anti-Rabbit IgG(H+L).