

À des fins de recherche uniquement

Anticorps Polyclonal de lapin anti-INSRR



Numéro de catalogue: 55112-1-AP

Informations de base

| | | |
|--|---|--|
| Numéro de catalogue: 55112-1-AP | Numéro d'acquisition GenBank: NM_014215 | Méthode de purification: Purification par affinité contre l'antigène |
| Taille: 150ul , Concentration: 400 µg/ml by Nanodrop and 227 µg/ml by Bradford method using BSA as the standard; | Identification du gène (NCBI): 3645 | Dilutions recommandées: WB 1:500-1:2000 |
| Hôte: Lapin | Nom complet: IR related receptor | |
| Isotype: IgG | MW calculé: 144 kDa | |
| | MW observés: 150-155 kDa | |

Applications

| | |
|--|---|
| Applications testées: WB, ELISA | Contrôles positifs: WB : tissu rénal de souris, tissu cérébral humain |
| Spécificité de l'espèce: Humain, rat, souris | |

Informations générales

INSRR, also named as IRR, belongs to the protein kinase superfamily, Tyr protein kinase family and INS receptor subfamily. It probably binds an INS related protein and has a tyrosine-protein kinase activity. It phosphorylates the INS receptor substrates IRS-1 and IRS-2. INSRR is a heterotetrameric transmembrane receptor composed of two alpha and two beta chains linked by disulfide bonds. INSRR shares high homology with the INS (IR) and the IGF-1R, but doesn't bind any of IR and IGF-1R known ligands. The antibody is specific to INSRR.

Stockage

Stockage:
Stocker à -20 °C.
Tampon de stockage:
PBS avec azoture de sodium à 0,02 % et glycérol à 50 % pH 7,3
L'aliquotage n'est pas nécessaire pour le stockage à -20C

*** Les 20ul contiennent 0,1% de BSA.

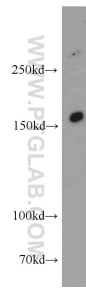
For technical support and original validation data for this product please contact:

T: 1 (888) 4PTGLAB (1-888-478-4522) (toll free in USA), or 1(312) 455-8498 (outside USA)

E: proteintech@ptglab.com
W: ptglab.com

This product is exclusively available under Proteintech Group brand and is not available to purchase from any other manufacturer.

Données de validation sélectionnées



mouse kidney tissue were subjected to SDS PAGE followed by western blot with 55112-1-AP (INSRR antibody) at dilution of 1:500 incubated at room temperature for 1.5 hours.