

À des fins de recherche uniquement

# Anticorps Polyclonal de lapin anti-EGR1



Numéro de catalogue: 55117-1-AP

Phare

19 Publications

## Informations de base

Numéro de catalogue:

55117-1-AP

Taille:

150ul , Concentration: 450 µg/ml by Nanodrop and 293 µg/ml by Bradford method using BSA as the standard;

Hôte:

Lapin

Isotype:

IgG

Numéro d'acquisition GenBank:

NM\_001964

Identification du gène (NCBI):

1958

Nom complet:

early growth response 1

MW calculé

58 kDa

MW observés:

70-80 kDa

Méthode de purification:

Purification par affinité contre l'antigène

Dilutions recommandées:

WB 1:500-1:1000

IHC 1:50-1:500

IF 1:200-1:800

## Applications

Applications testées:

FC, IF, IHC, WB, ELISA

Demandes citées:

IF, IHC, WB

Spécificité de l'espèce:

Humain, souris

Espèces citées:

Humain, souris

Contrôles positifs:

WB : cellules A549, cellules MCF-7, cellules PC-3

IHC : tissu placentaire humain, tissu de cancer du col de l'utérus humain

IF : cellules MCF-7,

**Remarque-IHC: il est suggéré de démasquer l'antigène avec un tampon de TE buffer pH 9,0; (\*) À défaut, 'le démasquage de l'antigène peut être effectué avec un tampon citrate pH 6,0.**

## Informations générales

Early growth response 1 (EGR1) is a member of EGR family which are transcriptional factors that contain three repetitive zinc finger DNA binding domains which bind to EGR response elements (ER) to regulate target gene expression. The expression of EGR family members is induced by growth factors, with EGR1 expression being induced by NGF. Increased EGR1 expression activates transcription of other signaling molecules, including CDK5 and tyrosine hydroxylase, and exerts long term effects on neural cell growth and differentiation. Egr-1 binds to the DNA sequence 5'-CGCCCCGC-3' (Egr-site), thereby activating transcription of target genes whose products are required for mitogenesis and differentiation. Western blotting of nuclear and cytoplasmic fractions of CNS tissue verified the cytoplasmic Egr1 as 110-kDa dimer or after denaturation as a 57-kDa version, which is reflecting its theoretical molecular weight of 57 kDa. In the nucleus Egr1 is found as 75-kDa homo- or heterodimer and as 35-kDa variant under strong denaturation.

## Publications notables

Autrice	Pubmed ID	Journal	Application
Shuyue Sheng	34608568	In Vitro Cell Dev Biol Anim	WB
Yan-Lin Yang	30462533	Am J Physiol Cell Physiol	WB
Yin Wang	32444791	Nat Commun	IF

## Stockage

Stockage:

Stocker à -20°C. Stable pendant un an après l'expédition.

Tampon de stockage:

PBS avec azote de sodium à 0,02 % et glycérol à 50 % pH 7,3

L'aliquotage n'est pas nécessaire pour le stockage à -20C

\*\*\* Les 20ul contiennent 0,1% de BSA.

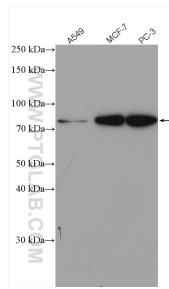
For technical support and original validation data for this product please contact:

T: 1 (888) 4PTGLAB (1-888-478-4522) (toll free in USA), or 1(312) 455-8498 (outside USA)

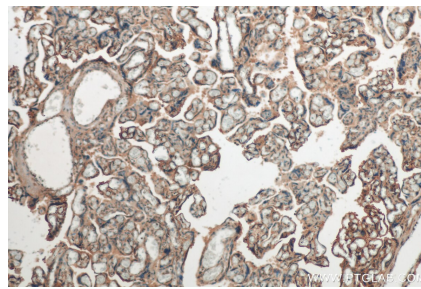
E: proteintech@ptglab.com  
W: ptglab.com

This product is exclusively available under Proteintech Group brand and is not available to purchase from any other manufacturer.

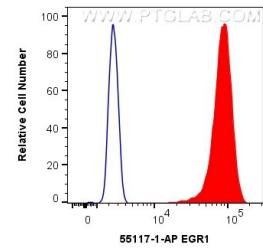
## Données de validation sélectionnées



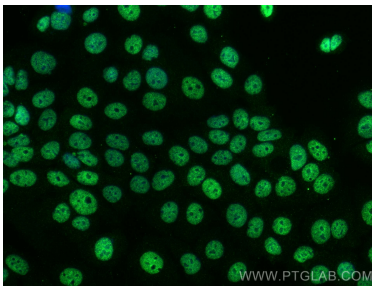
Various lysates were subjected to SDS PAGE followed by western blot with 55117-1-AP (EGR1 antibody) at dilution of 1:800 incubated at room temperature for 1.5 hours.



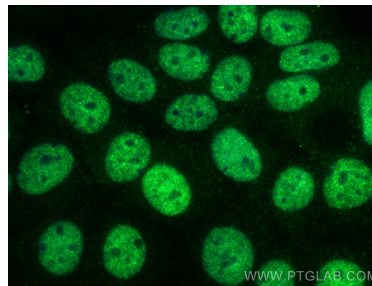
Immunohistochemical analysis of paraffin-embedded human placenta tissue slide using 55117-1-AP (EGR1 antibody) at dilution of 1:200 (under 10x lens). Heat mediated antigen retrieval with Tris-EDTA buffer (pH 9.0).



$1 \times 10^6$  MCF-7 cells were intracellularly stained with 0.4 ug Anti-Human EGR1 (55117-1-AP) and CoraLite@488-Conjugated AffiniPure Goat Anti-Rabbit IgG(H+L) at dilution 1:1000 (red), or 0.4 ug Control Antibody. Cells were fixed and permeabilized with Transcription Factor Staining Buffer Kit (PF00011).



Immunofluorescent analysis of (4% PFA) fixed MCF-7 cells using EGR1 antibody (55117-1-AP) at dilution of 1:400 and CoraLite@488-Conjugated AffiniPure Goat Anti-Rabbit IgG(H+L).



Immunofluorescent analysis of (4% PFA) fixed MCF-7 cells using EGR1 antibody (55117-1-AP) at dilution of 1:400 and CoraLite@488-Conjugated AffiniPure Goat Anti-Rabbit IgG(H+L).