

À des fins de recherche uniquement

Anticorps Polyclonal de lapin anti-CD336



Numéro de catalogue: 55118-1-AP

Informations de base

Numéro de catalogue: 55118-1-AP	Numéro d'acquisition GenBank: NM_004828	Méthode de purification: Purification par affinité contre l'antigène
Taille: 150ul , Concentration: 650 µg/ml by Nanodrop and 307 µg/ml by Bradford method using BSA as the standard;	Identification du gène (NCBI): 9436	Dilutions recommandées: WB 1:500-1:1000
Hôte: Lapin	Nom complet: natural cytotoxicity triggering receptor 2	
Isotype: IgG	MW calculé: 31 kDa	
	MW observés: 36-44 kDa	

Applications

Applications testées: WB, ELISA	Contrôles positifs: WB : tissu splénique humain,
Spécificité de l'espèce: Humain	

Informations générales

CD336, also named as NCR2, LY95 and NKp44, belongs to the natural cytotoxicity receptor (NCR) family. It is cytotoxicity-activating receptor that may contribute to the increased efficiency of activated natural killer (NK) cells to mediate tumor cell lysis. It is expressed on activated human NK cells. CD336 displays a single extracellular Ig-like V domain and a transmembrane portion containing the charged residue (Lysine), likely involved in the association with KARAP/DAP12 molecules. The antibody is specific to CD336.

Stockage

Stockage:
Stocker à -20 °C.
Tampon de stockage:
PBS avec azoture de sodium à 0,02 % et glycérol à 50 % pH 7,3
L'aliquotage n'est pas nécessaire pour le stockage à -20C

***** Les 20ul contiennent 0,1% de BSA.**

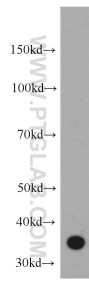
For technical support and original validation data for this product please contact:

T: 1 (888) 4PTGLAB (1-888-478-4522) (toll free in USA), or 1(312) 455-8498 (outside USA)

E: proteintech@ptglab.com
W: ptglab.com

This product is exclusively available under Proteintech Group brand and is not available to purchase from any other manufacturer.

Données de validation sélectionnées



human spleen tissue were subjected to SDS PAGE followed by western blot with 55118-1-AP (CD336 antibody) at dilution of 1:500 incubated at room temperature for 1.5 hours.