

À des fins de recherche uniquement

Anticorps Polyclonal de lapin anti-S1PR1/EDG1



Numéro de catalogue: 55133-1-AP

Phare

23 Publications

Informations de base

Numéro de catalogue:

55133-1-AP

Taille:

150ul, Concentration: 1000 µg/ml by Nanodrop;

Hôte:

Lapin

Isotype:

IgG

Numéro d'acquisition GenBank:

NM_001400

Identification du gène (NCBI):

1901

Nom complet:

sphingosine-1-phosphate receptor 1

MW calculé

43 kDa

MW observés:

40-50 kDa

Méthode de purification:

Purification par affinité contre l'antigène

Dilutions recommandées:

WB 1:1000-1:6000

IP 0.5-4.0 ug for IP and 1:200-1:1000 for WB

Applications

Applications testées:

IP, WB, ELISA

Demandes citées:

IF, IHC, IP, WB

Spécificité de l'espèce:

Humain, souris

Espèces citées:

Humain, rat, souris

Contrôles positifs:

WB : tissu cérébral de souris, tissu cérébral de rat

IP : tissu cérébral de souris,

Informations générales

S1PR1 (sphingosine-1-phosphate receptor 1), also known as S1P1 or EDG1, is one of five G-protein-coupled receptors for sphingosine-1-phosphate (S1P) (PMID: 18787560). S1P1 and its receptors have important regulatory functions in normal physiology and disease processes, particularly involving the immune, central nervous, and cardiovascular systems (PMID: 21339489). S1PR1 is widely expressed on various cell types, including endothelial cells and lymphocytes (PMID: 14737169). S1P-S1PR1 plays a major role in lymphocyte egress and chemotaxis, cell proliferation and survival and tumor angiogenesis and metastasis (PMID: 21102457). The antibody is specific to S1PR1.

Publications notables

Autrice	Pubmed ID	Journal	Application
Shuang Tong	24073762	Virology	IHC
Ting Fang	33101013	Front Pharmacol	WB
Zhi Zheng	30476824	Int Immunopharmacol	WB

Stockage

Stockage:

Stocker à -20°C. Stable pendant un an après l'expédition.

Tampon de stockage:

PBS avec azoture de sodium à 0,02 % et glycérol à 50 % pH 7,3

L'aliquotage n'est pas nécessaire pour le stockage à -20C

*** Les 20ul contiennent 0,1% de BSA.

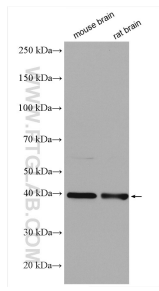
For technical support and original validation data for this product please contact:

T: 1 (888) 4PTGLAB (1-888-478-4522) (toll free in USA), or 1(312) 455-8498 (outside USA)

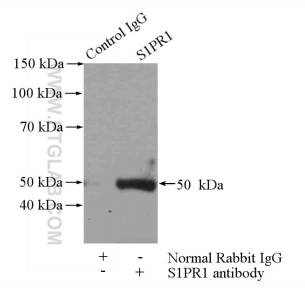
E: proteintech@ptglab.com
W: ptglab.com

This product is exclusively available under Proteintech Group brand and is not available to purchase from any other manufacturer.

Données de validation sélectionnées



Various lysates were subjected to SDS PAGE followed by western blot with 55133-1-AP (S1PR1/EDG1 antibody) at dilution of 1:3000 incubated at room temperature for 1.5 hours.



IP Result of anti-S1PR1/EDG1 (IP:55133-1-AP, 4ug; Detection:55133-1-AP 1:300) with mouse brain tissue lysate 2640ug.