

À des fins de recherche uniquement

Anticorps Polyclonal de lapin anti-smooth muscle actin specific



Numéro de catalogue: 55135-1-AP

221 Publications

Informations de base

Numéro de catalogue:

55135-1-AP

Taille:

150ul, Concentration: 600 µg/ml by Nanodrop;

Hôte:

Lapin

Isotype:

IgG

Numéro d'acquisition GenBank:

NM_001613

Identification du gène (NCBI):

59

Nom complet:

actin, alpha 2, smooth muscle, aorta

MW calculé

42 kDa

MW observés:

42 kDa

Méthode de purification:

Purification par affinité contre l'antigène

Dilutions recommandées:

WB 1:500-1:4000

IHC 1:20-1:200

IF 1:50-1:500

Applications

Applications testées:

IF, IHC, WB, ELISA

Demandes citées:

IF, IHC, WB

Spécificité de l'espèce:

Humain, rat, souris

Espèces citées:

Humain, Lapin, rat, souris

Remarque-IHC: il est suggéré de démasquer l'antigène avec un tampon de TE buffer pH 9,0; (*) À défaut, 'le démasquage de l'antigène peut être effectué avec un tampon citrate pH 6,0.

Contrôles positifs:

WB : tissu de côlon de souris, côlon de rat, poumon de rat, poumon de souris, tissu rénal de souris

IHC : tissu cardiaque humain, tissu de cancer du côlon humain, tissu de cancer du foie humain, tissu de cirrhose hépatique humaine, tissu de côlon de rat, tissu de côlon de souris, tissu de côlon humain, tissu hépatique de souris

IF : tissu cardiaque de souris,

Informations générales

ACTA2, also named as a-SMA, AAT6; ACTSA belongs to the actin family. Actins are highly conserved proteins that are involved in various types of cell motility and are ubiquitously expressed in all eukaryotic cells. Defects in ACTA2 are the cause of aortic aneurysm familial thoracic type 6 (AAT6). The immunogen of this antibody is a specific domain of ACTA2. This antibody stains the aorta only.

Publications notables

Autrice	Pubmed ID	Journal	Application
Yuan Gao	33173749	Adv Sci (Weinh)	IF
Wei Wang	32976932	Cell Signal	IF
H-J Wang	32959695	Hum Exp Toxicol	WB

Stockage

Stockage:

Stocker à -20 °C

Tampon de stockage:

PBS avec azoture de sodium à 0,02 % et glycérol à 50 % pH 7,3

L'aliquotage n'est pas nécessaire pour le stockage à -20C

*** Les 20ul contiennent 0,1% de BSA.

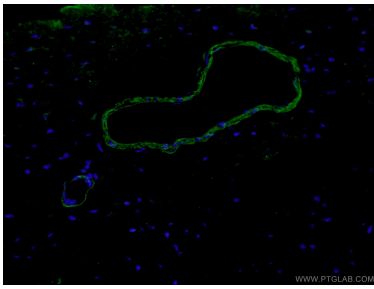
For technical support and original validation data for this product please contact:

T: 1 (888) 4PTGLAB (1-888-478-4522) (toll free in USA), or 1(312) 455-8498 (outside USA)

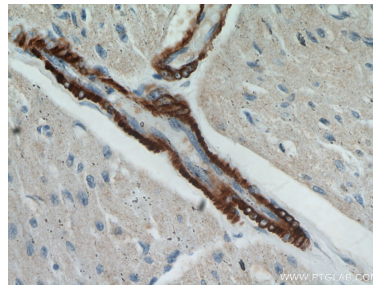
E: proteintech@ptglab.com
W: ptglab.com

This product is exclusively available under Proteintech Group brand and is not available to purchase from any other manufacturer.

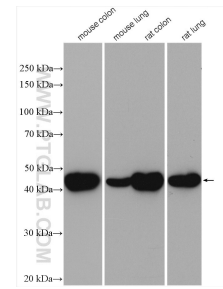
Données de validation sélectionnées



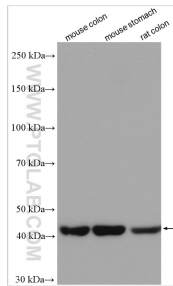
Immunofluorescent analysis of (4% PFA) fixed mouse heart tissue using 55135-1-AP (Alpha SMA-specific antibody) at dilution of 1:200 and Alexa Fluor 488-Conjugated AffiniPure Goat Anti-Rabbit IgG(H+L).



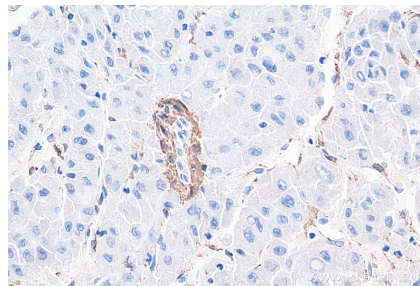
Immunohistochemical analysis of paraffin-embedded human heart using 55135-1-AP (ACTA2-Specific antibody) at dilution of 1:100 (under 40x lens).



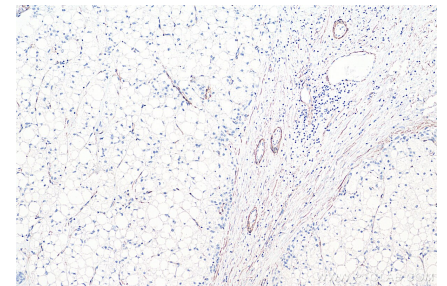
Various lysates were subjected to SDS PAGE followed by western blot with 55135-1-AP (smooth muscle actin-specific antibody) at dilution of 1:2000 incubated at room temperature for 1.5 hours.



Various lysates were subjected to SDS PAGE followed by western blot with 55135-1-AP (smooth muscle actin specific antibody) at dilution of 1:5000 incubated at room temperature for 1.5 hours.



Immunohistochemical analysis of paraffin-embedded human liver cancer tissue slide using 55135-1-AP (smooth muscle actin specific antibody) at dilution of 1:1000 (under 40x lens). Heat mediated antigen retrieval with Tris-EDTA buffer (pH 9.0).



Immunohistochemical analysis of paraffin-embedded human liver cancer tissue slide using 55135-1-AP (smooth muscle actin specific antibody) at dilution of 1:1000 (under 10x lens). Heat mediated antigen retrieval with Tris-EDTA buffer (pH 9.0).