

À des fins de recherche uniquement

Anticorps Polyclonal de lapin anti-PPP1CB



Numéro de catalogue: 55136-1-AP

Phare

2 Publications

Informations de base

Numéro de catalogue:

55136-1-AP

Taille:

150ul, Concentration: 1600 µg/ml by Nanodrop and 653 µg/ml by Bradford method using BSA as the standard;

Hôte:

Lapin

Isotype:

IgG

Numéro d'acquisition GenBank:

NM_002709

Identification du gène (NCBI):

Nom complet: protein phosphatase 1, catalytic subunit, beta isoform

MW calculé

37 kDa

MW observés:

37-40 kDa, 33 kDa

Méthode de purification:

Purification par affinité contre l'antigène

Dilutions recommandées:

WB 1:1000-1:8000

IF 1:50-1:500

Applications

Applications testées:

IF, WB, ELISA

Demandes citées:

WB

Spécificité de l'espèce:

Humain, rat, souris

Espèces citées:

Humain

Contrôles positifs:

WB : cellules A549, cellules BxPC-3, cellules NIH/3T3, cellules SH-SY5Y, tissu cérébral de souris

IF : cellules A549,

Informations générales

PPP1CB, also named as PP-1B, belongs to the PPP phosphatase family and PP-1 subfamily. Protein phosphatase (PP1) is essential for cell division, it participates in the regulation of glycogen metabolism, muscle contractility and protein synthesis. PPP1CB is involved in regulation of ionic conductances and long-term synaptic plasticity. This antibody is specific to PPP1CB.

Publications notables

Autrice	Pubmed ID	Journal	Application
Zhanying Hu	32702076	PLoS Pathog	WB
Yang Guo	34280391	Exp Eye Res	WB

Stockage

Stockage:

Stocker à -20 °C

Tampon de stockage:

PBS avec azoture de sodium à 0,02 % et glycérol à 50 % pH 7,3

L'aliquotage n'est pas nécessaire pour le stockage à -20C

*** Les 20ul contiennent 0,1% de BSA.

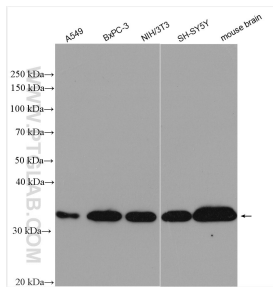
For technical support and original validation data for this product please contact:

T: 1 (888) 4PTGLAB (1-888-478-4522) (toll free in USA), or 1(312) 455-8498 (outside USA)

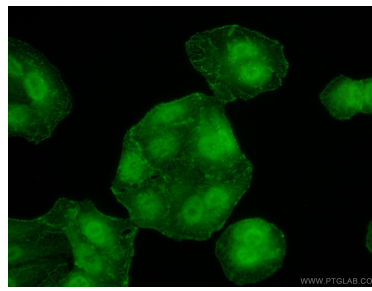
E: proteintech@ptglab.com
W: ptglab.com

This product is exclusively available under Proteintech Group brand and is not available to purchase from any other manufacturer.

Données de validation sélectionnées



Various lysates were subjected to SDS PAGE followed by western blot with 55136-1-AP (PPP1CB antibody) at dilution of 1:4000 incubated at room temperature for 1.5 hours.



Immunofluorescent analysis of (10% Formaldehyde) fixed A549 cells using 55136-1-AP (PPP1CB antibody) at dilution of 1:50 and Alexa Fluor 488-conjugated AffiniPure Goat Anti-Rabbit IgG(H+L).