

À des fins de recherche uniquement

Anticorps Polyclonal de lapin anti-PPP3CB-specific



Numéro de catalogue: 55148-1-AP

Phare

4 Publications

Informations de base

Numéro de catalogue:

55148-1-AP

Taille:

150µL, Concentration: 300 µg/ml by Nanodrop and 220 µg/ml by Bradford method using BSA as the standard;

Hôte:

Lapin

Isotype:

IgG

Numéro d'acquisition GenBank:

NM_021132

Identification du gène (NCBI):

5532

Nom complet:

protein phosphatase 3 (formerly 2B), catalytic subunit, beta isoform

MW calculé

59 kDa

MW observés:

59 kDa

Méthode de purification:

Purification par affinité contre l'antigène

Dilutions recommandées:

WB 1:1000-1:6000

IP 0.5-4.0 ug for IP and 1:500-1:1000 for WB

IHC 1:20-1:200

IF 1:10-1:100

Applications

Applications testées:

IF, IHC, IP, WB, ELISA

Demandes citées:

IF, IHC, WB

Spécificité de l'espèce:

Humain, rat, souris

Espèces citées:

Humain, rat, souris

Contrôles positifs:

WB: cellules NIH/3T3, tissu cérébral de rat, tissu cérébral de souris, tissu cérébral humain fœtal

IP: tissu cérébral de souris,

IHC: tissu cardiaque humain, tissu rénal de souris

IF: cellules A431,

Remarque-IHC: il est suggéré de démasquer l'antigène avec un tampon de TE buffer pH 9,0; (*) À défaut, le démasquage de l'antigène peut être effectué avec un tampon citrate pH 6,0.

Informations générales

PPP3CB is one of the three isoforms of the A subunit of calcineurin (CnA). Calcineurin is a calcium-dependent serine/threonine phosphatase. It consists of two subunits: subunit A (CnA) and subunit B (CnB). For CnA, three isoforms PPP3CA (CnAα), PPP3CB (CnAβ) and PPP3CC (CnAγ) have been identified. PPP3CB is a calcium-dependent, calmodulin-stimulated protein phosphatase. It may have a role in the calmodulin activation of calcineurin. This antibody is specific to PPP3CB.

Publications notables

Autrice	Pubmed ID	Journal	Application
Junnan Wu	26436650	J Clin Invest	WB,IHC,IF
Yue Zhao	28540409	J Mol Med (Berl)	WB,IHC
Yue Qin	35388181	Mol Psychiatry	WB

Stockage

Stockage:

Stocker à -20°C. Stable pendant un an après l'expédition.

Tampon de stockage:

PBS avec azoture de sodium à 0,02 % et glycérol à 50 % pH 7,3

L'aliquotage n'est pas nécessaire pour le stockage à -20C

***** Les 20ul contiennent 0,1% de BSA.**

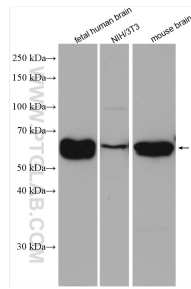
For technical support and original validation data for this product please contact:

T: 1 (888) 4PTGLAB (1-888-478-4522) (toll free in USA), or 1(312) 455-8498 (outside USA)

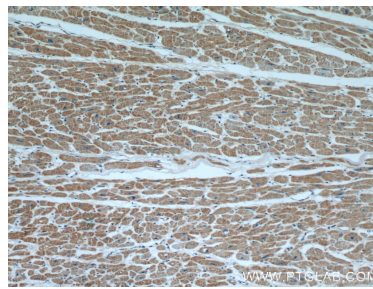
E: proteintech@ptglab.com
W: ptglab.com

This product is exclusively available under Proteintech Group brand and is not available to purchase from any other manufacturer.

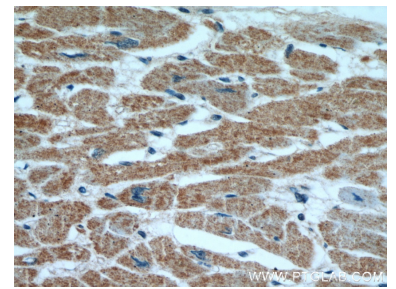
Données de validation sélectionnées



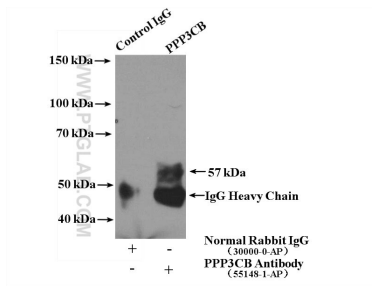
Various lysates were subjected to SDS PAGE followed by western blot with 55148-1-AP (PPP3CB-specific antibody) at dilution of 1:3000 incubated at room temperature for 1.5 hours.



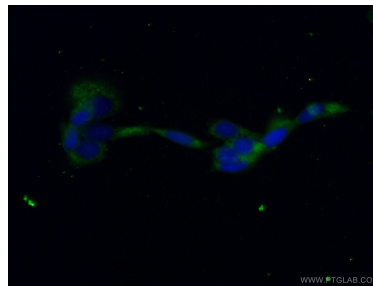
Immunohistochemical analysis of paraffin-embedded human heart using 55148-1-AP (PPP3CB-specific antibody) at dilution of 1:50 (under 10x lens).



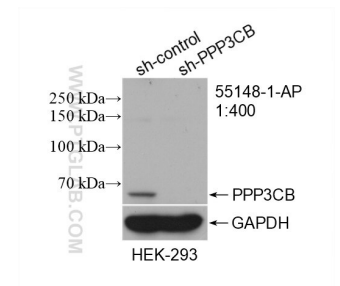
Immunohistochemical analysis of paraffin-embedded human heart using 55148-1-AP (PPP3CB-specific antibody) at dilution of 1:50 (under 40x lens).



IP Result of anti-PPP3CB-specific (IP:55148-1-AP, 4ug; Detection:55148-1-AP 1:500) with mouse brain tissue lysate 4000ug.



Immunofluorescent analysis of (-20°C Ethanol) fixed A431 cells using 55148-1-AP (PPP3CB-specific antibody) at dilution of 1:25 and Alexa Fluor 488-conjugated AffiniPure Goat Anti-Rabbit IgG(H+L).



WB result of PPP3CB-specific antibody (55148-1-AP; 1:400; incubated at room temperature for 1.5 hours) with sh-Control and sh-PPP3CB-specific transfected HEK-293 cells.