

À des fins de recherche uniquement

Anticorps Polyclonal de lapin anti-PPP1CC



Numéro de catalogue: 55150-1-AP

3 Publications

Informations de base

Numéro de catalogue:

55150-1-AP

Taille:

150ul, Concentration: 920 µg/ml by Nanodrop and 920 µg/ml by Bradford method using BSA as the standard;

Hôte:

Lapin

Isotype:

IgG

Numéro d'acquisition GenBank:

NM_002710

Identification du gène (NCBI):

5501

Nom complet:

protein phosphatase 1, catalytic subunit, gamma isoform

MW calculé

38 kDa

MW observés:

35 kDa

Méthode de purification:

Purification par affinité contre l'antigène

Dilutions recommandées:

WB 1:500-1:1000

IP 0.5-4.0 ug for IP and 1:500-1:1000 for WB

IHC 1:20-1:200

IF 1:10-1:100

Applications

Applications testées:

IF, IHC, IP, WB, ELISA

Demandes citées:

WB

Spécificité de l'espèce:

Humain, rat, souris

Espèces citées:

Humain, souris

Contrôles positifs:

WB : tissu cérébral de souris, cellules L02, tissu cérébral de rat

IP : tissu cérébral de souris,

IHC : tissu cardiaque humain, tissu hépatique humain

IF : cellules HeLa,

Remarque-IHC: il est suggéré de démasquer l'antigène avec un tampon de TE buffer pH 9,0; (*) À défaut, le démasquage de l'antigène peut être effectué avec un tampon citrate pH 6,0.

Informations générales

PPP1CC, also named as PP-1G, belongs to the PPP phosphatase family and PP-1 subfamily. Protein phosphatase 1 (PP1) is essential for cell division, and participates in the regulation of glycogen metabolism, muscle contractility and protein synthesis. It is involved in regulation of ionic conductances and long-term synaptic plasticity. PPP1CC may play an important role in dephosphorylating substrates such as the postsynaptic density-associated Ca²⁺/calmodulin dependent protein kinase II. The antibody is specific to PPP1CC.

Publications notables

Autrice	Pubmed ID	Journal	Application
Ye-Ya Tan	34124052	Front Cell Dev Biol	WB
Vinita Yadav	28637872	J Biol Chem	WB
Yin Zhang	34907157	Cell Death Dis	WB

Stockage

Stockage:

Stocker à -20 °C

Tampon de stockage:

PBS avec azotate de sodium à 0,02 % et glycérol à 50 % pH 7,3

L'aliquotage n'est pas nécessaire pour le stockage à -20C

*** Les 20ul contiennent 0,1% de BSA.

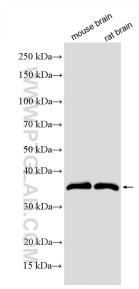
For technical support and original validation data for this product please contact:

T: 1 (888) 4PTGLAB (1-888-478-4522) (toll free in USA), or 1(312) 455-8498 (outside USA)

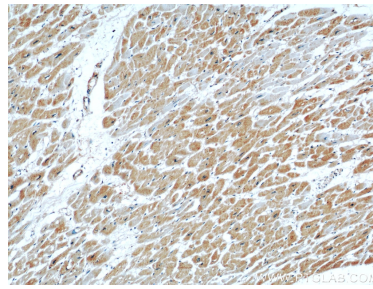
E: proteintech@ptglab.com
W: ptglab.com

This product is exclusively available under Proteintech Group brand and is not available to purchase from any other manufacturer.

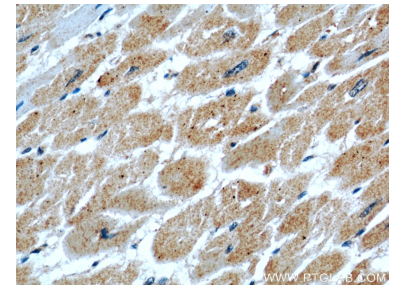
Données de validation sélectionnées



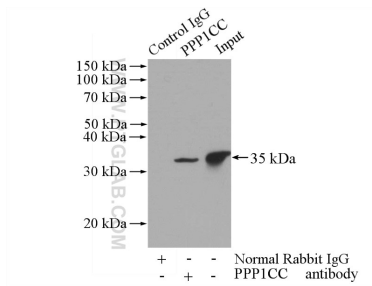
Various lysates were subjected to SDS PAGE followed by western blot with 55150-1-AP (PPP1CC antibody) at dilution of 1:600 incubated at room temperature for 1.5 hours.



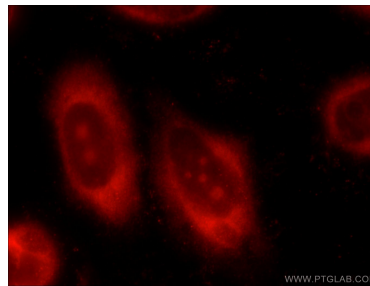
Immunohistochemical analysis of paraffin-embedded human heart using 55150-1-AP (PPP1CC antibody) at dilution of 1:50 (under 10x lens).



Immunohistochemical analysis of paraffin-embedded human heart using 55150-1-AP (PPP1CC antibody) at dilution of 1:50 (under 40x lens).



IP Result of anti-PPP1CC (IP:55150-1-AP, 4 μ g; Detection:55150-1-AP 1:500) with mouse brain tissue lysate 3440 μ g.



Immunofluorescent analysis of HeLa cells using 55150-1-AP (PPP1CC antibody) at dilution of 1:25 and Rhodamine-Goat anti-Rabbit IgG.