

À des fins de recherche uniquement

Anticorps Polyclonal de lapin anti-LNPEP



Numéro de catalogue: 55154-1-AP

Informations de base

Numéro de catalogue: 55154-1-AP	Numéro d'acquisition GenBank: NM_005575	Méthode de purification: Purification par affinité contre l'antigène
Taille: 150ul , Concentration: 1000 µg/ml by Nanodrop and 667 µg/ml by Bradford method using BSA as the standard;	Identification du gène (NCBI): 4012	Dilutions recommandées: WB 1:500-1:1000 IHC 1:20-1:200
Hôte: Lapin	Nom complet: leucyl/cystinyl aminopeptidase	
Isotype: IgG	MW calculé: 117 kDa	
	MW observés: 117-125 kDa	

Applications

Applications testées:

IHC, WB, ELISA

Spécificité de l'espèce:

Humain

Contrôles positifs:

WB : tissu cérébral humain, cellules COLO 320, tissu cardiaque humain

IHC : tissu cardiaque humain, tissu rénal humain

Remarque-IHC: il est suggéré de démasquer l'antigène avec un tampon de TE buffer pH 9,0; (*) À défaut, 'le démasquage de l'antigène peut être 'effectué avec un tampon citrate pH 6,0.

Informations générales

LNPEP, also named as OTASE, IRAP, P-LAP and Otase, may be involved in the inactivation of neuronal peptides in the brain. LNPEP cleaves Met-enkephalin and dynorphin. It binds angiotensin IV and may be the angiotensin IV receptor in the brain. It can be detected a protein with molecular mass of 165 kDa in several human tissues including heart, small intestine, kidney and 140 kDa in brain. LNPEP contains 18 potential N-glycosylation sites so that the differential usage of the glycosylation site in the brain causes the difference in the molecular mass of the enzyme. (PMID:11389728). Two forms of LNPEP are purified from human placenta: one is a monomeric, 61-kDa protein and the other is a heterodimeric protein with 64- and 97-kDa subunits (PMID:10601849). It can form a homodimer of 280 kDa (PMID:10601849). This antibody is specific to LNPEP.

Stockage

Stockage:

Stocker à -20 °C

Tampon de stockage:

PBS avec azoture de sodium à 0,02 % et glycérol à 50 % pH 7,3

L'aliquotage n'est pas nécessaire pour le stockage à -20C

*** Les 20ul contiennent 0,1% de BSA.

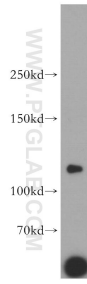
For technical support and original validation data for this product please contact:

T: 1 (888) 4PTGLAB (1-888-478-4522) (toll free in USA), or 1(312) 455-8498 (outside USA)

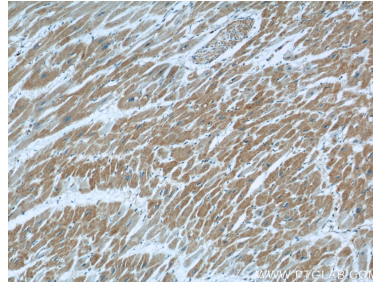
E: proteintech@ptglab.com
W: ptglab.com

This product is exclusively available under Proteintech Group brand and is not available to purchase from any other manufacturer.

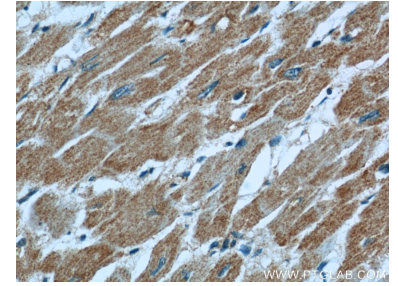
Données de validation sélectionnées



human brain tissue were subjected to SDS PAGE followed by western blot with 55154-1-AP (LNPEP antibody) at dilution of 1:800 incubated at room temperature for 1.5 hours.



Immunohistochemical analysis of paraffin-embedded human heart using 55154-1-AP (LNPEP antibody) at dilution of 1:50 (under 10x lens).



Immunohistochemical analysis of paraffin-embedded human heart using 55154-1-AP (LNPEP antibody) at dilution of 1:50 (under 40x lens).