

À des fins de recherche uniquement

Anticorps Polyclonal de lapin anti-PPP3CC-specific



Numéro de catalogue: 55163-1-AP

1 Publications

Informations de base

Numéro de catalogue:

55163-1-AP

Taille:

150ul, Concentration: 600 µg/ml by Nanodrop and 200 µg/ml by Bradford method using BSA as the standard;

Hôte:

Lapin

Isotype:

IgG

Numéro d'acquisition GenBank:

NM_005605

Identification du gène (NCBI):

5533

Nom complet:

protein phosphatase 3 (formerly 2B), catalytic subunit, gamma isoform

MW calculé

58 kDa

MW observés:

58 kDa

Méthode de purification:

Purification par affinité contre l'antigène

Dilutions recommandées:

WB 1:500-1:2000

IF 1:50-1:500

Applications

Applications testées:

IF, WB, ELISA

Demandes citées:

WB

Spécificité de l'espèce:

Humain, souris

Espèces citées:

Humain

Contrôles positifs:

WB : tissu cérébral humain foetal, tissu cérébral humain, tissu testiculaire humain

IF : cellules U2OS,

Informations générales

PPP3CC, also named as CALNA3 and CNA3, belongs to the PPP phosphatase family and PP-2B subfamily. It is a calcium-dependent, calmodulin-stimulated protein phosphatase. It may have a role in the calmodulin activation of calcineurin. This antibody is specific to PPP3CC.

Publications notables

Autrice	Pubmed ID	Journal	Application
Hong Cao	35235867	Acta Biomater	WB

Stockage

Stockage:

Stocker à -20 °C.

Tampon de stockage:

PBS avec azoture de sodium à 0,02 % et glycérol à 50 % pH 7,3

L'aliquotage n'est pas nécessaire pour le stockage à -20C

*** Les 20ul contiennent 0,1% de BSA.

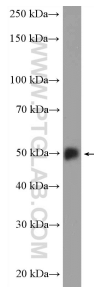
For technical support and original validation data for this product please contact:

T: 1 (888) 4PTGLAB (1-888-478-4522) (toll free in USA), or 1(312) 455-8498 (outside USA)

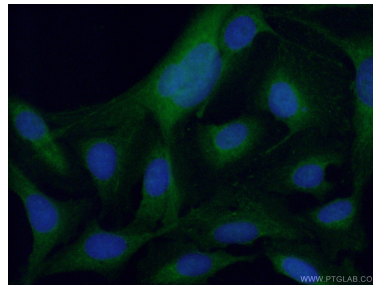
E: proteintech@ptglab.com
W: ptglab.com

This product is exclusively available under Proteintech Group brand and is not available to purchase from any other manufacturer.

Données de validation sélectionnées



fetal human brain tissue were subjected to SDS PAGE followed by western blot with 55163-1-AP (PPP3CC-specific antibody at dilution of 1:1000 incubated at room temperature for 1.5 hours.



Immunofluorescent analysis of (4% PFA) fixed U2OS cells using 55163-1-AP (PPP3CC-specific antibody) at dilution of 1:50 and Alexa Fluor 488-conjugated AffiniPure Goat Anti-Rabbit IgG(H+L).