

À des fins de recherche uniquement

Anticorps Polyclonal de lapin anti-THOC2



Numéro de catalogue: 55178-1-AP

Phare

2 Publications

Informations de base

Numéro de catalogue:

55178-1-AP

Taille:

150ul, Concentration: 133 µg/ml by Bradford method using BSA as the standard;

Hôte:

Lapin

Isotype:

IgG

Numéro d'acquisition GenBank:

NM_020449

Identification du gène (NCBI):

57187

Nom complet:

THO complex 2

MW calculé

183 kDa

MW observés:

150 kDa

Méthode de purification:

Purification par affinité contre l'antigène

Dilutions recommandées:

WB 1:200-1:1000

IP 0.5-4.0 ug for IP and 1:200-1:1000 for WB

IF 1:20-1:200

Applications

Applications testées:

IF, IP, WB, ELISA

Demandes citées:

WB

Spécificité de l'espèce:

Humain

Espèces citées:

Humain

Contrôles positifs:

WB : cellules HeLa, cellules Jurkat

IP : cellules HeLa,

IF : cellules HeLa,

Informations générales

THOC2 also termed as THO complex 2 or CXorf3 is 1593 amino acid protein, which belongs to the THOC2 family. THOC2 is a component of heteromultimeric THO/TREX (transcription/export) complex, which is a multi-protein structure consisting of THOC1, THOC2, THOC3, BAT1 and ALY. The TREX complex associates with spliced mRNA and not with unspliced pre-mRNA. It is recruited to spliced mRNAs by a transcription-independent mechanism.

Publications notables

Autrice	Pubmed ID	Journal	Application
Mattioli Francesca	30476144	Hum Mol Genet	WB
Toshie Sakuma	24618812	Viruses	WB

Stockage

Stockage:

Stocker à -20 °C

Tampon de stockage:

PBS avec azoture de sodium à 0,02 % et glycérol à 50 % pH 7,3

L'aliquotage n'est pas nécessaire pour le stockage à -20C

*** Les 20ul contiennent 0,1% de BSA.

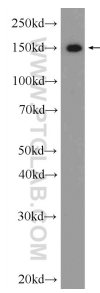
For technical support and original validation data for this product please contact:

T: 1 (888) 4PTGLAB (1-888-478-4522) (toll free in USA), or 1(312) 455-8498 (outside USA)

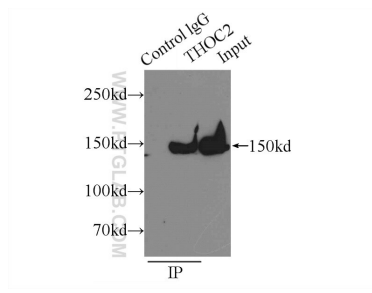
E: proteintech@ptglab.com
W: ptglab.com

This product is exclusively available under Proteintech Group brand and is not available to purchase from any other manufacturer.

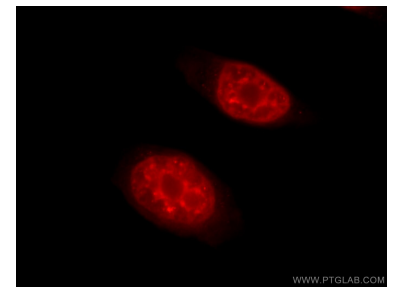
Données de validation sélectionnées



HeLa cells were subjected to SDS PAGE followed by western blot with 55178-1-AP (THOC2 Antibody) at dilution of 1:300 incubated at room temperature for 1.5 hours.



IP Result of anti-THOC2 (IP:55178-1-AP, 5ug; Detection:55178-1-AP 1:300) with HeLa cells lysate 1800ug.



Immunofluorescent analysis of HeLa cells using 55178-1-AP (THOC2 antibody) at dilution of 1:50 and Rhodamine-Goat anti-Rabbit IgG.