

À des fins de recherche uniquement

# Anticorps Polyclonal de lapin anti-PDE6C



Numéro de catalogue: 55183-1-AP

## Informations de base

Numéro de catalogue:

55183-1-AP

Taille:

150ul, Concentration: 200 µg/ml by Nanodrop and 133 µg/ml by Bradford method using BSA as the standard;

Hôte:

Lapin

Isotype:

IgG

Numéro d'acquisition GenBank:

NM\_006204

Identification du gène (NCBI):

5146

Nom complet:

phosphodiesterase 6C, cGMP-specific, cone, alpha prime

MW calculé

99 kDa

MW observés:

52 kDa, 99 kDa

Méthode de purification:

Purification par affinité contre l'antigène

Dilutions recommandées:

WB 1:200-1:1000

## Applications

Applications testées:

WB, ELISA

Spécificité de l'espèce:

Humain

Contrôles positifs:

WB : cellules Y79,

## Informations générales

PDE6C, also named as PDEA2, belongs to the cyclic nucleotide phosphodiesterase family. It catalyze the reaction: Guanosine 3',5'-cyclic phosphate + H<sub>2</sub>O = guanosine 5'-phosphate. Defects in PDE6C are the cause of cone dystrophy type 4 (COD4). Mutations in the PDE6C gene encoding the catalytic subunit of the cone photoreceptor phosphodiesterase as a cause of autosomal recessive achromatopsia. (PMID:19887631) This antibody is specific to PDE6C.

## Stockage

Stockage:

Stocker à -20 °C.

Tampon de stockage:

PBS avec azoture de sodium à 0,02 % et glycérol à 50 % pH 7,3

L'aliquotage n'est pas nécessaire pour le stockage à -20C

**\*\*\* Les 20ul contiennent 0,1% de BSA.**

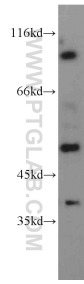
For technical support and original validation data for this product please contact:

T: 1 (888) 4PTGLAB (1-888-478-4522) (toll free in USA), or 1(312) 455-8498 (outside USA)

E: [proteintech@ptglab.com](mailto:proteintech@ptglab.com)  
W: [ptglab.com](http://ptglab.com)

This product is exclusively available under Proteintech Group brand and is not available to purchase from any other manufacturer.

## Données de validation sélectionnées



Y79 cells were subjected to SDS PAGE followed by western blot with 55183-1-AP (PDE6C antibody) at dilution of 1:200 incubated at room temperature for 1.5 hours.