

À des fins de recherche uniquement

Anticorps Polyclonal de lapin anti-ATP1A1-Specific



Numéro de catalogue: 55187-1-AP

Phare

12 Publications

Informations de base

Numéro de catalogue:

55187-1-AP

Taille:

150ul, Concentration: 600 µg/ml by Nanodrop;

Hôte:

Lapin

Isotype:

IgG

Numéro d'acquisition GenBank:

NM_000701

Identification du gène (NCBI):

476

Nom complet:

ATPase, Na⁺/K⁺ transporting, alpha 1 polypeptide

MW calculé

113 kDa

MW observés:

100-110 kDa

Méthode de purification:

Purification par affinité contre l'antigène

Dilutions recommandées:

WB 1:1000-1:8000

IHC 1:50-1:500

IF 1:500-1:2000

Applications

Applications testées:

FC, IF, IHC, WB, ELISA

Demandes citées:

IF, WB

Spécificité de l'espèce:

Humain, souris

Espèces citées:

Humain, rat, souris

Contrôles positifs:

WB : cellules HEK-293, cellules HepG2, cellules MCF-7, cellules Neuro-2a, tissu cardiaque de souris

IHC : tissu de cancer du foie humain, tissu rénal de souris, tissu rénal humain

IF : cellules HEK-293, cellules Caco-2

Remarque-IHC: il est suggéré de démasquer l'antigène avec un tampon de TE buffer pH 9,0; (*) À défaut, le démasquage de l'antigène peut être effectué avec un tampon citrate pH 6,0.

Informations générales

ATP1A1 is the catalytic component of Na⁺/K⁺-ATPase which is a membrane bound enzyme primarily involved in generation of Na⁺ and K⁺ gradients across plasma membranes and in determination of cytoplasmic Na⁺ levels. ATP1A1 is a ubiquitously expressed membrane protein and often used as the marker or internal control for plasma membrane protein. This antibody is specific to ATP1A1.

Publications notables

Autrice	Pubmed ID	Journal	Application
Jun Lin	34514733	Adv Sci (Weinh)	WB
Yan Xu	27857155	Sci Rep	IF
Yuetao Wen	35609730	Neurosci Res	WB

Stockage

Stockage:

Stocker à -20°C. Stable pendant un an après l'expédition.

Tampon de stockage:

PBS avec azoture de sodium à 0,02 % et glycérol à 50 % pH 7,3

L'aliquotage n'est pas nécessaire pour le stockage à -20C

*** Les 20ul contiennent 0,1% de BSA.

For technical support and original validation data for this product please contact:

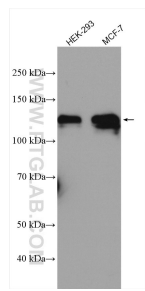
T: 1 (888) 4PTGLAB (1-888-478-4522) (toll free in USA), or 1(312) 455-8498 (outside USA)

E: proteintech@ptglab.com

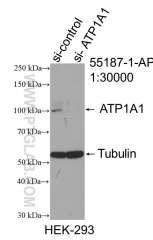
W: ptglab.com

This product is exclusively available under Proteintech Group brand and is not available to purchase from any other manufacturer.

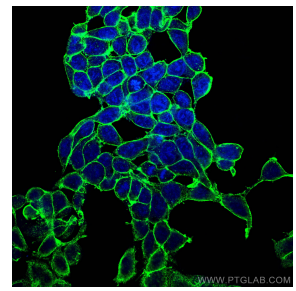
Données de validation sélectionnées



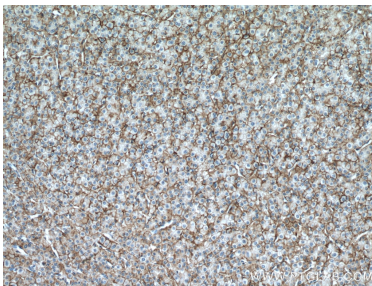
Various lysates were subjected to SDS PAGE followed by western blot with 55187-1-AP (ATP1A1-Specific antibody) at dilution of 1:4000 incubated at room temperature for 1.5 hours.



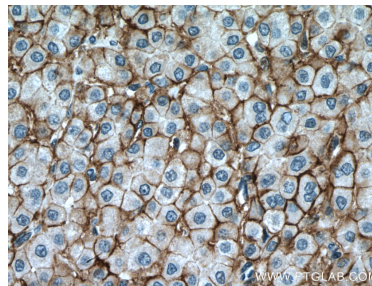
WB result of ATP1A1-Specific antibody (55187-1-AP; 1:30000; incubated at room temperature for 1.5 hours) with sh-Control and sh-ATP1A1-Specific transfected HEK-293 cells.



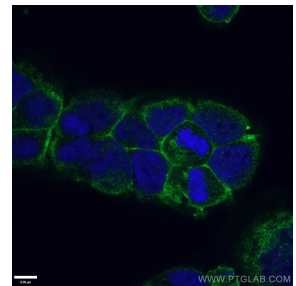
Immunofluorescent analysis of (-20°C Methanol) fixed HEK-293 cells using ATP1A1-Specific antibody (55187-1-AP) at dilution of 1:1000 and CoraLite@488-Conjugated AffiniPure Goat Anti-Rabbit IgG(H+L).



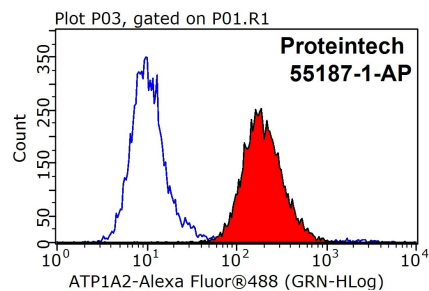
Immunohistochemical analysis of paraffin-embedded human liver cancer tissue slide using 55187-1-AP (ATP1A1-Specific antibody) at dilution of 1:200 (under 10x lens). Heat mediated antigen retrieval with Tris-EDTA buffer (pH 9.0).



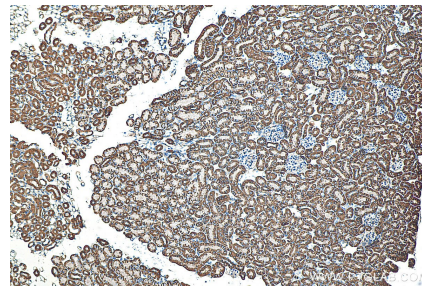
Immunohistochemical analysis of paraffin-embedded human liver cancer tissue slide using 55187-1-AP (ATP1A1-Specific antibody) at dilution of 1:200 (under 40x lens). Heat mediated antigen retrieval with Tris-EDTA buffer (pH 9.0).



Immunofluorescent analysis of (4% PFA) fixed Caco-2 cells using 55187-1-AP (ATP1A1-Specific antibody) at dilution of 1:100 and CoraLite488-Conjugated AffiniPure Goat Anti-Rabbit IgG(H+L).



1X10⁶ HEK-293 cells were stained with 0.2ug ATP1A1-Specific antibody (55187-1-AP, red) and control antibody (blue). Fixed with 90% MeOH blocked with 3% BSA (30 min). Alexa Fluor 488-conjugated AffiniPure Goat Anti-Rabbit IgG(H+L) with dilution 1:1000.



Immunohistochemical analysis of paraffin-embedded mouse kidney tissue slide using 55187-1-AP (ATP1A1-Specific antibody) at dilution of 1:400 (under 10x lens). Heat mediated antigen retrieval with Tris-EDTA buffer (pH 9.0).