

À des fins de recherche uniquement

Anticorps Polyclonal de lapin anti-ATGL



Numéro de catalogue: 55190-1-AP

Phare

43 Publications

Informations de base

Numéro de catalogue:

55190-1-AP

Taille:

150ul, Concentration: 700 µg/ml by Nanodrop;

Hôte:

Lapin

Isotype:

IgG

Numéro d'acquisition GenBank:

NM_020376

Identification du gène (NCBI):

57104

Nom complet:

patatin-like phospholipase domain containing 2

MW calculé

55 kDa

MW observés:

55 kDa

Méthode de purification:

Purification par affinité contre l'antigène

Dilutions recommandées:

WB 1:500-1:1000

IP 0.5-4.0 µg for IP and 1:500-1:1000 for WB

Applications

Applications testées:

IP, WB, ELISA

Demandes citées:

CoIP, IF, IHC, IP, WB

Spécificité de l'espèce:

Humain, rat, souris

Espèces citées:

Humain, porc, poulet, rat, souris

Contrôles positifs:

WB : cellules 3T3-L1, cellules A431, cellules HeLa, tissu cardiaque de rat, tissu cardiaque de souris, tissu cardiaque humain, tissu de muscle squelettique de rat, tissu de muscle squelettique de souris, tissu testiculaire de souris

IP : tissu testiculaire de souris,

Informations générales

ATGL, also named as PNPLA2, TTS2 and Desnutrin, catalyzes the initial step in triglyceride hydrolysis in adipocyte and non-adipocyte lipid droplets. It also has acylglycerol transacylase activity. ATGL may act coordinately with LIPE/HLS within the lipolytic cascade. It regulates adiposome size and may be involved in the degradation of adiposomes. May play an important role in energy homeostasis. Defects in ATGL are the cause of neutral lipid storage disease with myopathy (NLSDM). This antibody is specific to ATGL.

Publications notables

Autrice	Pubmed ID	Journal	Application
Binbin Zhou	36169888	Mol Neurobiol	WB
Yuzuru Iizuka	34588391	Exp Anim	WB
Zhao Yang	36120828	J Biochem Mol Toxicol	WB

Stockage

Stockage:

Stocker à -20 °C.

Tampon de stockage:

PBS avec azoture de sodium à 0,02 % et glycérol à 50 % pH 7,3

L'aliquotage n'est pas nécessaire pour le stockage à -20C

*** Les 20ul contiennent 0,1% de BSA.

For technical support and original validation data for this product please contact:

T: 1 (888) 4PTGLAB (1-888-478-4522) (toll free in USA), or 1(312) 455-8498 (outside USA)

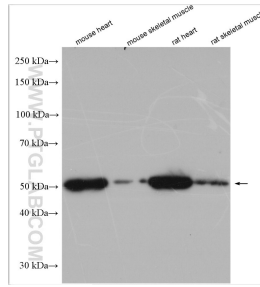
E: proteintech@ptglab.com
W: ptglab.com

This product is exclusively available under Proteintech Group brand and is not available to purchase from any other manufacturer.

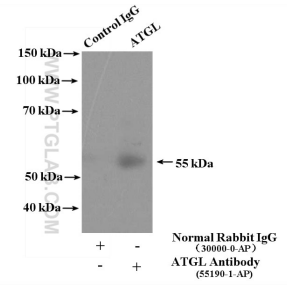
Données de validation sélectionnées



3T3-L1 cells were subjected to SDS PAGE followed by western blot with 55190-1-AP (ATGL antibody) at dilution of 1:500 incubated at room temperature for 1.5 hours.



Various lysates were subjected to SDS PAGE followed by western blot with 55190-1-AP (ATGL antibody) at dilution of 1:6000 incubated at room temperature for 1.5 hours.



IP Result of anti-ATGL (IP:55190-1-AP, 4ug; Detection:55190-1-AP 1:500) with mouse testis tissue lysate 4000ug.