

À des fins de recherche uniquement

Anticorps Polyclonal de lapin anti-CSNK1A1



Numéro de catalogue: 55192-1-AP

11 Publications

Informations de base

Numéro de catalogue:

55192-1-AP

Taille:

150ul , Concentration: 450 µg/ml by Nanodrop and 453 µg/ml by Bradford method using BSA as the standard;

Hôte:

Lapin

Isotype:

IgG

Numéro d'acquisition GenBank:

NM_001892

Identification du gène (NCBI):

1452

Nom complet:

casein kinase 1, alpha 1

MW calculé

42 kDa

MW observés:

42-45 kDa

Méthode de purification:

Purification par affinité contre l'antigène

Dilutions recommandées:

WB 1:500-1:2000

IHC 1:50-1:500

IF 1:10-1:100

Applications

Applications testées:

IF, IHC, WB, ELISA

Demandes citées:

CoIP, IF, IHC, IP, WB

Spécificité de l'espèce:

Humain, rat, souris

Espèces citées:

Humain, souris

Contrôles positifs:

WB : cellules MCF7, cellules HeLa, cellules NIH/3T3

IHC : tissu de cancer du sein humain, tissu de cancer du poumon humain

IF : cellules A549,

Remarque-IHC: il est suggéré de démasquer l'antigène avec un tampon de TE buffer pH 9,0; (*) À défaut, 'le démasquage de l'antigène peut être 'effectué avec un tampon citrate pH 6,0.

Informations générales

CSNK1A1, also named as CK1, belongs to the protein kinase superfamily, CK1 Ser/Thr protein kinase family and Casein kinase I subfamily. Casein kinases are operationally defined by their preferential utilization of acidic proteins such as caseins as substrates. CSNK1A1 can phosphorylate a large number of proteins. It participates in Wnt signaling. CSNK1A1 phosphorylates CTNNB1 at 'Ser-45'. May play a role in segregating chromosomes during mitosis. This antibody is specific to CSNK1A1.

Publications notables

Autrice	Pubmed ID	Journal	Application
Xue Deng	34726688	J Cell Biol	WB
Xiaomin Liu	35550648	Stem Cell Res Ther	WB,IF
Yuyuan Zi	35280671	Int J Biol Sci	WB

Stockage

Stockage:

Stocker à -20°C. Stable pendant un an après l'expédition.

Tampon de stockage:

PBS avec azoture de sodium à 0,02 % et glycérol à 50 % pH 7,3

L'aliquotage n'est pas nécessaire pour le stockage à -20C

*** Les 20ul contiennent 0,1% de BSA.

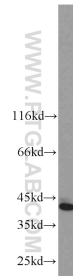
For technical support and original validation data for this product please contact:

T: 1 (888) 4PTGLAB (1-888-478-4522) (toll free in USA), or 1(312) 455-8498 (outside USA)

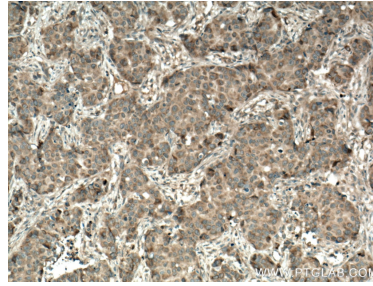
E: proteintech@ptglab.com
W: ptglab.com

This product is exclusively available under Proteintech Group brand and is not available to purchase from any other manufacturer.

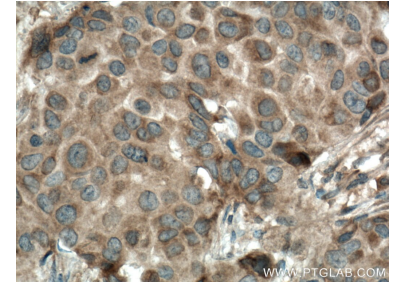
Données de validation sélectionnées



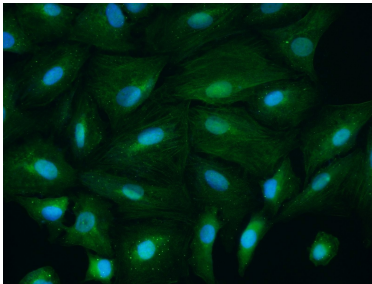
MCF7 cells were subjected to SDS PAGE followed by western blot with 55192-1-AP (CSNK1A1 antibody) at dilution of 1:1000 incubated at room temperature for 1.5 hours.



Immunohistochemical analysis of paraffin-embedded human breast cancer tissue slide using 55192-1-AP (CSNK1A1 antibody) at dilution of 1:200 (under 10x lens. Heat mediated antigen retrieval with Tris-EDTA buffer (pH 9.0).



Immunohistochemical analysis of paraffin-embedded human breast cancer tissue slide using 55192-1-AP (CSNK1A1 antibody) at dilution of 1:200 (under 40x lens. Heat mediated antigen retrieval with Tris-EDTA buffer (pH 9.0).



Immunofluorescent analysis of A549 cells using 55192-1-AP (CSNK1A1 antibody) at dilution of 1:25 and Alexa Fluor 488-conjugated AffiniPure Goat Anti-Rabbit IgG(H+L).