

À des fins de recherche uniquement

Anticorps Polyclonal de lapin anti-CaMKII beta-Specific



Numéro de catalogue: 55218-1-AP

Informations de base

Numéro de catalogue:

55218-1-AP

Taille:

150ul , Concentration: 400 µg/ml by Nanodrop and 280 µg/ml by Bradford method using BSA as the standard;

Hôte:

Lapin

Isotype:

IgG

Numéro d'acquisition GenBank:

NM_001220

Identification du gène (NCBI):

816

Nom complet:

calcium/calmodulin-dependent protein kinase II beta

MW calculé

73 kDa

MW observés:

55-60 kDa

Méthode de purification:

Purification par affinité contre l'antigène

Dilutions recommandées:

WB 1:1000-1:6000

IHC 1:20-1:200

IF 1:20-1:200

Applications

Applications testées:

IF, IHC, WB, ELISA

Spécificité de l'espèce:

Humain, rat, souris

Remarque-IHC: il est suggéré de démasquer l'antigène avec un tampon de TE buffer pH 9,0; (*) À défaut, 'le démasquage de l'antigène peut être effectué avec un tampon citrate pH 6,0.

Contrôles positifs:

WB : cellules A549, cellules HeLa, tissu cérébral de souris, tissu de cervelet de souris

IHC : tissu de muscle squelettique humain, tissu cérébral humain

IF : cellules HEK-293,

Informations générales

CaMKII beta (Calcium/calmodulin-dependent protein kinase type II subunit beta), also named as CAMK2B, CAM2 or CAMKB, belongs to the protein kinase superfamily, CAMK Ser/Thr protein kinase family and CaMK subfamily. It is a member of the NMDAR signaling complex in excitatory synapses, it may regulate NMDAR-dependent potentiation of the AMPAR and synaptic plasticity. It plays a distinct role in the induction of energy in T lymphocytes, by differential regulation of IL10 and IL2 gene transcription suggesting MEF2A as a molecular target which can integrate different calcium signals (PMID:22578382). CAMK2B has 8 isoforms produced by alternative splicing with the molecular weight 50-73 kDa. This antibody is specific to CAMK2B and can recognize all the isoforms except isoform 7.

Stockage

Stockage:

Stocker à -20 °C.

Tampon de stockage:

PBS avec azotate de sodium à 0,02 % et glycérol à 50 % pH 7,3

L'aliquotage n'est pas nécessaire pour le stockage à -20C

*** Les 20ul contiennent 0,1% de BSA.

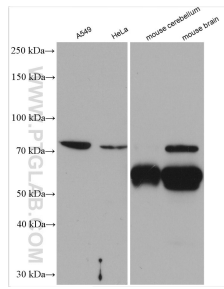
For technical support and original validation data for this product please contact:

T: 1 (888) 4PTGLAB (1-888-478-4522) (toll free in USA), or 1(312) 455-8498 (outside USA)

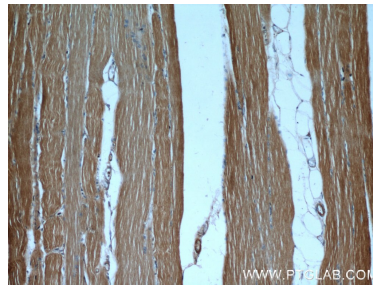
E: proteintech@ptglab.com
W: ptglab.com

This product is exclusively available under Proteintech Group brand and is not available to purchase from any other manufacturer.

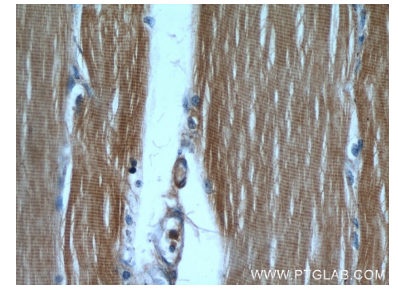
Données de validation sélectionnées



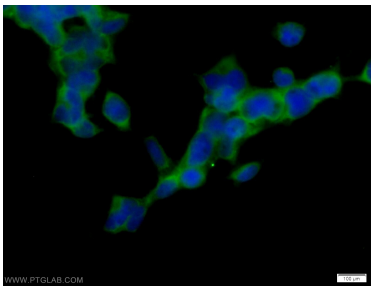
Various lysates were subjected to SDS PAGE followed by western blot with 55218-1-AP (CaMKII beta-Specific antibody) at dilution of 1:3000 incubated at room temperature for 1.5 hours.



Immunohistochemical analysis of paraffin-embedded human skeletal muscle using 55218-1-AP (CaMKII beta antibody) at dilution of 1:50 (under 10x lens).



Immunohistochemical analysis of paraffin-embedded human skeletal muscle using 55218-1-AP (CaMKII beta antibody) at dilution of 1:50 (under 40x lens).



Immunofluorescent analysis of HEK-293 cells using 55218-1-AP (CaMKII beta antibody) at dilution of 1:50 and Alexa Fluor 488-conjugated AffiniPure Goat Anti-Rabbit IgG(H+L).