

À des fins de recherche uniquement

Anticorps Polyclonal de lapin anti-AKT



Numéro de catalogue: 55230-1-AP

3 Publications

Informations de base

Numéro de catalogue:

55230-1-AP

Taille:

150ul, Concentration: 450 µg/ml by Nanodrop and 307 µg/ml by Bradford method using BSA as the standard;

Hôte:

Lapin

Isotype:

IgG

Numéro d'acquisition GenBank:

NM_001014431

Identification du gène (NCBI):

207

Nom complet:

v-akt murine thymoma viral oncogene homolog 1

MW calculé

56 kDa

MW observés:

56-62 kDa

Méthode de purification:

Purification par affinité contre l'antigène

Dilutions recommandées:

WB 1:500-1:1000

IHC 1:50-1:500

Applications

Applications testées:

IHC, WB, ELISA

Demandes citées:

WB

Spécificité de l'espèce:

Humain, souris

Espèces citées:

Humain, souris

Contrôles positifs:

WB : cellules HeLa, cellules A549

IHC : tissu de cancer du sein humain, tissu de cancer de la prostate humaine

Remarque-IHC: il est suggéré de démasquer l'antigène avec un tampon de TE buffer pH 9,0; (*) À défaut, le démasquage de l'antigène peut être effectué avec un tampon citrate pH 6,0.

Informations générales

AKT1, also named as PKB and RAC, belongs to the protein kinase superfamily, AGC Ser/Thr protein kinase family and RAC subfamily. It plays a role as a key modulator of the AKT-mTOR signaling pathway controlling the tempo of the process of newborn neurons integration during adult neurogenesis, including correct neuron positioning, dendritic development and synapse formation. AKT1 promotes glycogen synthesis by mediating the insulin-induced activation of glycogen synthase. It plays a role in glucose transport by mediating insulin-induced translocation of the GLUT4 glucose transporter to the cell surface. AKT1 mediates the antiapoptotic effects of IGF-1. (PMID:16139227) This antibody is specific to AKT1. It has no cross reaction to AKT2 and AKT3.

Publications notables

| Autrice | Pubmed ID | Journal | Application |
|--------------|-----------|---------------|-------------|
| Yuwen Wang | 29845189 | Mol Med Rep | WB |
| Lu Lu Li | 35688466 | J Immunol | WB |
| Xiaohang Gao | 36902420 | Int J Mol Sci | WB |

Stockage

Stockage:

Stocker à -20 °C

Tampon de stockage:

PBS avec azoture de sodium à 0,02 % et glycérol à 50 % pH 7,3

L'aliquotage n'est pas nécessaire pour le stockage à -20C

*** Les 20ul contiennent 0,1% de BSA.

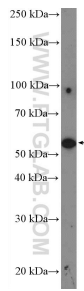
For technical support and original validation data for this product please contact:

T: 1 (888) 4PTGLAB (1-888-478-4522) (toll free in USA), or 1(312) 455-8498 (outside USA)

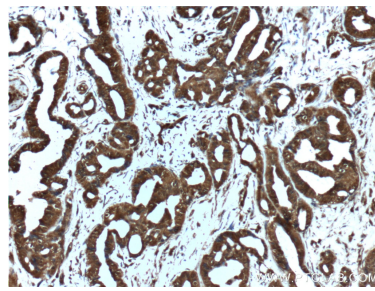
E: proteintech@ptglab.com
W: ptglab.com

This product is exclusively available under Proteintech Group brand and is not available to purchase from any other manufacturer.

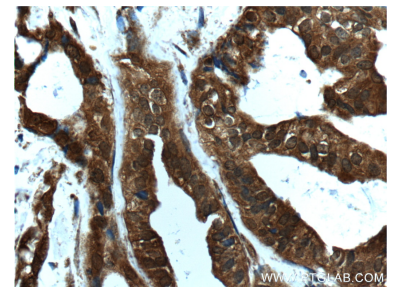
Données de validation sélectionnées



HeLa cells were subjected to SDS PAGE followed by western blot with 55230-1-AP (AKT1 Antibody) at dilution of 1:600 incubated at room temperature for 1.5 hours.



Immunohistochemical analysis of paraffin-embedded human breast cancer tissue slide using 55230-1-AP (AKT1 Antibody) at dilution of 1:200 (under 10x lens).



Immunohistochemical analysis of paraffin-embedded human breast cancer tissue slide using 55230-1-AP (AKT1 Antibody) at dilution of 1:200 (under 40x lens).