

À des fins de recherche uniquement

Anticorps Polyclonal de lapin anti-NSE/ENO2-specific



Numéro de catalogue: 55235-1-AP

Phare

1 Publications

Informations de base

Numéro de catalogue:

55235-1-AP

Taille:

150ul , Concentration: 133 µg/ml by Bradford method using BSA as the standard;

Hôte:

Lapin

Isotype:

IgG

Numéro d'acquisition GenBank:

NM_001975

Identification du gène (NCBI):

2026

Nom complet:

enolase 2 (gamma, neuronal)

MW calculé

47 kDa

MW observés:

47 kDa

Méthode de purification:

Purification par affinité contre l'antigène

Dilutions recommandées:

WB 1:1000-1:4000

IHC 1:20-1:200

Applications

Applications testées:

IHC, WB, ELISA

Demandes citées:

WB

Spécificité de l'espèce:

Humain, rat, souris

Espèces citées:

souris

Contrôles positifs:

WB : cellules SH-SY5Y, cellules HEK-293, cellules HepG2, cellules U-251, tissu cérébral de souris

IHC : tissu cérébral humain, tissu de cancer de l'estomac humain

Remarque-IHC: il est suggéré de démasquer l'antigène avec un tampon de TE buffer pH 9,0; (*) À défaut, le démasquage de l'antigène peut être effectué avec un tampon citrate pH 6,0.

Informations générales

NSE, also named as ENO2, belongs to the enolase family. Enolases are cytoplasmic glycolytic enzymes that may be involved in differentiation. The enolase has three isoenzymes, alpha, beta and gamma. The alpha form is expressed in most tissues, whereas the beta form is expressed in muscle tissue. The gamma enolase (ENO2), a homodimer, is primarily localized in neurons and neuroendocrine cells and is a cancer diagnostic marker for brain tumors (PMID:7520111). ENO2 plays a role in the glycolysis-related energy pathway and might be involved in higher metabolic activity during the day than at night, at least in part. This antibody is specific to ENO2 and has no cross reaction to ENO1 and ENO3.

Publications notables

Autrice	Pubmed ID	Journal	Application
Chunli Xu	31257504	Mol Med Rep	WB

Stockage

Stockage:

Stocker à -20 °C.

Tampon de stockage:

PBS avec azoture de sodium à 0,02 % et glycérol à 50 % pH 7,3

L'aliquotage n'est pas nécessaire pour le stockage à -20C

*** Les 20ul contiennent 0,1% de BSA.

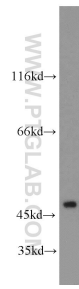
For technical support and original validation data for this product please contact:

T: 1 (888) 4PTGLAB (1-888-478-4522) (toll free in USA), or 1(312) 455-8498 (outside USA)

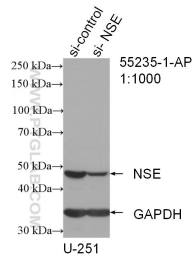
E: proteintech@ptglab.com
W: ptglab.com

This product is exclusively available under Proteintech Group brand and is not available to purchase from any other manufacturer.

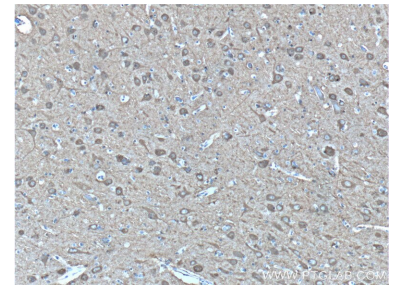
Données de validation sélectionnées



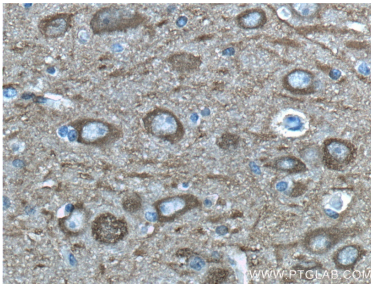
SH-SY5Y cells were subjected to SDS PAGE followed by western blot with 55235-1-AP (NSE/ENO2-specific antibody) at dilution of 1:2000 incubated at room temperature for 1.5 hours.



WB result of NSE/ENO2-specific antibody (55235-1-AP; 1:1000; incubated at room temperature for 1.5 hours) with sh-Control and sh-NSE/ENO2-specific transfected U-251 cells.



Immunohistochemical analysis of paraffin-embedded human brain tissue slide using 55235-1-AP (NSE/ENO2-specific antibody at dilution of 1:200 (under 10x lens).



Immunohistochemical analysis of paraffin-embedded human brain tissue slide using 55235-1-AP (NSE/ENO2-specific antibody at dilution of 1:200 (under 40x lens).