

À des fins de recherche uniquement

# Anticorps Polyclonal de lapin anti-Caspase 12



Numéro de catalogue: 55238-1-AP

Phare

85 Publications

## Informations de base

Numéro de catalogue:

55238-1-AP

Taille:

150ul, Concentration: 550 µg/ml by Nanodrop and 400 µg/ml by Bradford method using BSA as the standard;

Hôte:

Lapin

Isotype:

IgG

Numéro d'acquisition GenBank:

NR\_000035

Identification du gène (NCBI):

120329

Nom complet:

caspase 12 (gene/pseudogene)

MW calculé

39 kDa

MW observés:

36-42 kDa, 50 kDa

Méthode de purification:

Purification par affinité contre l'antigène

Dilutions recommandées:

WB 1:500-1:2000

IP 0.5-4.0 ug for IP and 1:500-1:2000 for WB

IHC 1:50-1:500

IF 1:50-1:500

## Applications

Applications testées:

IF, IHC, IP, WB, ELISA

Demandes citées:

IF, IHC, WB

Spécificité de l'espèce:

Humain

Espèces citées:

Humain, porc, Hamster

Contrôles positifs:

WB : cellules HEK-293, multi-cellules

IP : cellules HEK-293,

IHC : tissu d'hyperplasie de la prostate humain, tissu cardiaque humain

IF : cellules HeLa,

**Remarque-IHC: il est suggéré de démasquer l'antigène avec un tampon de TE buffer pH 9.0; (\*) À défaut, le démasquage de l'antigène peut être effectué avec un tampon citrate pH 6,0.**

## Informations générales

Caspase 12 is an enzyme known as a cysteine protease. It belongs to a family of enzymes called caspases that cleave their substrates at C-terminal aspartic acid residues. It is most highly related to members of the ICE subfamily of caspases that process inflammatory cytokines. Caspase-12 is located in the endoplasmic reticulum (ER). It is responsible for ER-stress-induced apoptosis, such as high calcium concentration, low oxygen and low glucose levels. Caspase-12 Antibody detects endogenous levels of full-length caspase-12 protein (50 kDa) and its cleaved product (40-44 kDa). This antibody does not cross-react with other caspases.

## Publications notables

Autrice	Pubmed ID	Journal	Application
Xiaowei Niu	30232231	Biosci Rep	WB
Yu Wang	32897804	Pharm Biol	WB
Meng Wang	33014875	Front Oncol	WB

## Stockage

Stockage:

Stocker à -20°C. Stable pendant un an après l'expédition.

Tampon de stockage:

PBS avec azoture de sodium à 0,02 % et glycérol à 50 % pH 7,3

L'aliquotage n'est pas nécessaire pour le stockage à -20C

\*\*\* Les 20ul contiennent 0,1% de BSA.

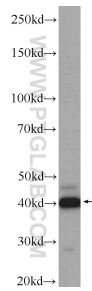
For technical support and original validation data for this product please contact:

T: 1 (888) 4PTGLAB (1-888-478-4522) (toll free in USA), or 1(312) 455-8498 (outside USA)

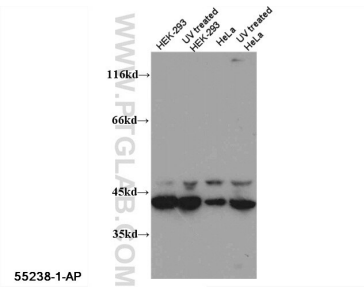
E: [proteintech@ptglab.com](mailto:proteintech@ptglab.com)  
W: [ptglab.com](http://ptglab.com)

This product is exclusively available under Proteintech Group brand and is not available to purchase from any other manufacturer.

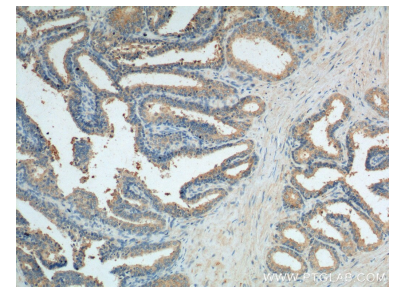
## Données de validation sélectionnées



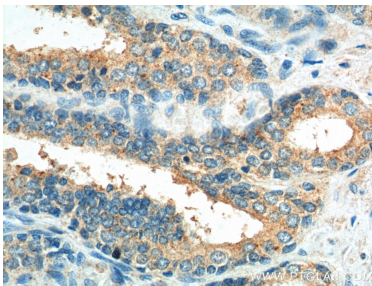
HEK-293 cells were subjected to SDS PAGE followed by western blot with 55238-1-AP (CASP12 antibody) at dilution of 1:1000 incubated at room temperature for 1.5 hours.



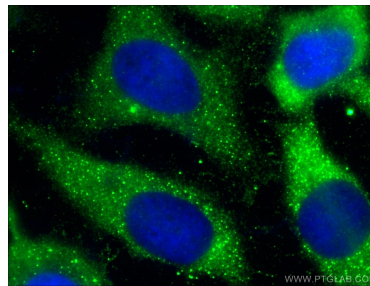
WB result of 55238-1-AP (CASP12 antibody) with various lysates.



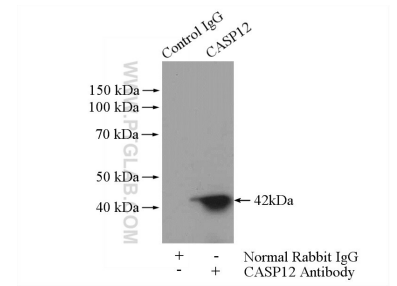
Immunohistochemical analysis of paraffin-embedded human prostate hyperplasia tissue slide using 55238-1-AP (Caspase 12 Antibody) at dilution of 1:200 (under 10x lens).



Immunohistochemical analysis of paraffin-embedded human prostate hyperplasia tissue slide using 55238-1-AP (Caspase 12 Antibody) at dilution of 1:200 (under 40x lens).



Immunofluorescent analysis of (10% Formaldehyde) fixed HeLa cells using 55238-1-AP (Caspase 12 antibody) at dilution of 1:50 and Alexa Fluor 488-conjugated AffiniPure Goat Anti-Rabbit IgG(H+L).



IP Result of anti-Caspase 12 (IP:55238-1-AP, 4ug; Detection:55238-1-AP 1:1000) with HEK-293 cells lysate 2000ug.