

À des fins de recherche uniquement

# Anticorps Polyclonal de lapin anti-CARM1



Numéro de catalogue: 55246-1-AP

Phare

10 Publications

## Informations de base

Numéro de catalogue:

55246-1-AP

Taille:

150ul, Concentration: 273 µg/ml by Bradford method using BSA as the standard;

Hôte:

Lapin

Isotype:

IgG

Numéro d'acquisition GenBank:

NM\_199141

Identification du gène (NCBI):

10498

Nom complet:

coactivator-associated arginine methyltransferase 1

MW calculé

66 kDa

MW observés:

63-66 kDa, 55 kDa

Méthode de purification:

Purification par affinité contre l'antigène

Dilutions recommandées:

IHC 1:50-1:500

IF 1:20-1:200

## Applications

Applications testées:

IF, IHC, ELISA

Demandes citées:

CoIP, IF, IHC, IP, WB

Spécificité de l'espèce:

Humain, rat, singe, souris

Espèces citées:

Humain, souris

Contrôles positifs:

IHC : tissu de cancer du sein humain, tissu de cancer du col de l'utérus humain, tissu de mélanome malin humain

IF : cellules NIH/3T3,

**Remarque-IHC: il est suggéré de démasquer l'antigène avec un tampon de TE buffer pH 9,0; (\*) À défaut, le démasquage de l'antigène peut être effectué avec un tampon citrate pH 6,0.**

## Informations générales

CARM1, also named as PRMT4, belongs to the protein arginine N-methyltransferase family. It is a dual functional coregulator that facilitates transcription initiation by methylation of Arg17 and Arg26 of histone H3 and also dictates the subsequent coactivator complex disassembly by methylation of the steroid receptor coactivator family coactivators and p300/cAMP-response element-binding protein. CARM1 functions as a coactivator for many nuclear receptors, such as oestrogen receptor, androgen receptor, thyroid receptor and farnesoid X-receptor. It also coactivates other transcription factors such as myocyte enhancer factor 2C (MEF2C), β-catenin, p53, nuclear factor (NF)-κB and the cAMP-responsive element-binding factor. The enzymatic activity and coactivator function of CARM1 has been found to be inactivated through phosphorylation at a conserved serine residue at mitosis stage. This antibody was generated against a synthetic peptide corresponding to a fragment of human CARM1. It is expected to specifically recognize the CRAM1. In certain type of cells, like HeLa, double bands can be detected with this antibody. This may due to the additional PTM sites in cells themselves.

## Publications notables

Autrice	Pubmed ID	Journal	Application
Limei Ji	34455779	J Med Chem	WB
Guixin Wu	35557817	RSC Adv	WB
Cheng Wang	35623249	Eur J Med Chem	WB

## Stockage

Stockage:

Stocker à -20 °C

Tampon de stockage:

PBS avec azoture de sodium à 0,02 % et glycérol à 50 % pH 7,3

L'aliquotage n'est pas nécessaire pour le stockage à -20C

\*\*\* Les 20ul contiennent 0,1% de BSA.

For technical support and original validation data for this product please contact:

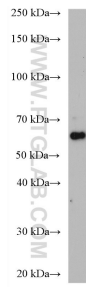
T: 1 (888) 4PTGLAB (1-888-478-4522) (toll free in USA), or 1(312) 455-8498 (outside USA)

E: proteintech@ptglab.com

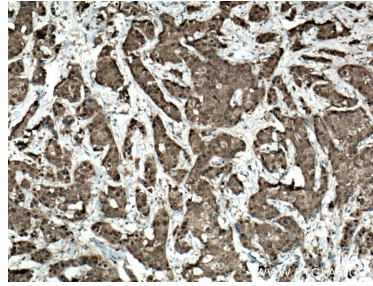
W: ptglab.com

**This product is exclusively available under Proteintech Group brand and is not available to purchase from any other manufacturer.**

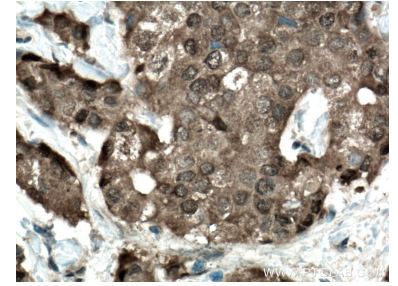
## Données de validation sélectionnées



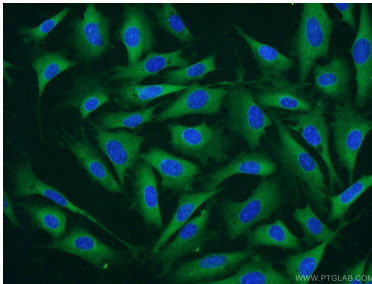
NIH/3T3 cells were subjected to SDS PAGE followed by western blot with 55246-1-AP (CARM1 antibody) at dilution of 1:1000 incubated at room temperature for 1.5 hours.



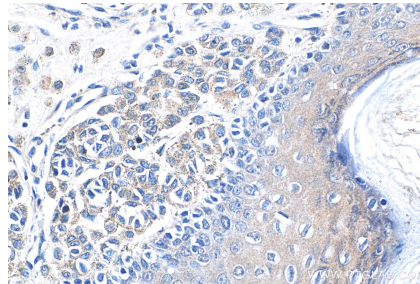
Immunohistochemical analysis of paraffin-embedded human breast cancer tissue slide using 55246-1-AP (CARM1 antibody) at dilution of 1:200 (under 10x lens. Heat mediated antigen retrieval with Tris-EDTA buffer (pH 9.0).



Immunohistochemical analysis of paraffin-embedded human breast cancer tissue slide using 55246-1-AP (CARM1 antibody) at dilution of 1:200 (under 40x lens. Heat mediated antigen retrieval with Tris-EDTA buffer (pH 9.0).



Immunofluorescent analysis of NIH/3T3 cells using 55246-1-AP (CARM1 antibody) at dilution of 1:50 and Alexa Fluor 488-conjugated AffiniPure Goat Anti-Rabbit IgG(H+L).



Immunohistochemical analysis of paraffin-embedded human malignant melanoma tissue slide using 55246-1-AP (CARM1 antibody) at dilution of 1:200 (under 40x lens).