

À des fins de recherche uniquement

Anticorps Polyclonal de lapin anti- Neurobeachin



Numéro de catalogue: 55287-1-AP

Informations de base

Numéro de catalogue:

55287-1-AP

Taille:

150ul , Concentration: 230 µg/ml by
Nanodrop;

Hôte:

Lapin

Isotype:

IgG

Numéro d'acquisition GenBank:

NM_015678

Identification du gène (NCBI):

26960

Nom complet:

neurobeachin

MW calculé

328 kDa

MW observés:

280-300 kDa

Méthode de purification:

Purification par affinité contre
l'antigène

Dilutions recommandées:

WB 1:500-1:1000

Applications

Applications testées:

WB, ELISA

Spécificité de l'espèce:

Humain, souris

Contrôles positifs:

WB : tissu cérébral de souris,

Informations générales

Neurobeachin is a member of a large, diverse group of A-kinase anchor proteins that target the activity of protein kinase A to specific subcellular sites by binding to its type II regulatory subunits. Brain-specific expression and coat protein-like membrane recruitment of a highly similar protein in mouse suggest an involvement in neuronal post-Golgi membrane traffic. Mutations in this gene may be associated with a form of autism. This gene and its expression are frequently disrupted in patients with multiple myeloma.

Stockage

Stockage:

Stocker à -20°C. Stable pendant un an après l'expédition.

Tampon de stockage:

PBS avec azoture de sodium à 0,02 % et glycérol à 50 % pH 7,3

L'aliquotage n'est pas nécessaire pour le stockage à -20C

***** Les 20ul contiennent 0,1% de BSA.**

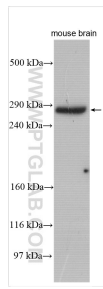
For technical support and original validation data for this product please contact:

T: 1 (888) 4PTGLAB (1-888-478-4522) (toll free
in USA), or 1(312) 455-8498 (outside USA)

E: proteintech@ptglab.com
W: ptglab.com

This product is exclusively available under Proteintech Group brand and is not available to purchase from any other manufacturer.

Données de validation sélectionnées



mouse brain tissue were subjected to SDS PAGE followed by western blot with 55287-1-AP (Neurobeachin antibody) at dilution of 1:600 incubated at room temperature for 1.5 hours.