

À des fins de recherche uniquement

# Anticorps Polyclonal de lapin anti-MMP21



Numéro de catalogue: 55289-1-AP

2 Publications

## Informations de base

<b>Numéro de catalogue:</b> 55289-1-AP	<b>Numéro d'acquisition GenBank:</b> NM_147191	<b>Méthode de purification:</b> Purification par affinité contre l'antigène
<b>Taille:</b> 150ul , Concentration: 1000 µg/ml by Nanodrop and 293 µg/ml by Bradford method using BSA as the standard;	<b>Identification du gène (NCBI):</b> 118856	<b>Dilutions recommandées:</b> WB 1:500-1:1000 IF 1:20-1:200
<b>Hôte:</b> Lapin	<b>Nom complet:</b> matrix metallopeptidase 21	
<b>Isotype:</b> IgG	<b>MW calculé:</b> 65 kDa	
	<b>MW observés:</b> 67 kDa	

## Applications

<b>Applications testées:</b> IF, WB, ELISA	<b>Contrôles positifs:</b> WB : tissu hépatique de souris, cellules L02
<b>Demandes citées:</b> IHC, WB	<b>IF :</b> cellules L02,
<b>Spécificité de l'espèce:</b> Humain, souris	
<b>Espèces citées:</b> Humain, souris	

## Informations générales

MMP21 belongs to the peptidase M10A family. It may have an important and specific function in tumor progression and embryogenesis. It cleaves alpha-1-antitrypsin. The proenzyme without the signal peptide has a calculated molecular mass of 62 kD; following activation by furin, the processed enzyme has a calculated molecular mass of 49 kD (PMID:12617721), and MMP21 protein was detected in fetal neuroectoderm, in placenta, and in leukocytes (OMIM). This antibody is specific to MMP21.

## Publications notables

Autrice	Pubmed ID	Journal	Application
Xi-Ji Qin	36123719	Hum Genomics	WB
Jiangfan Zhou	35398966	Cancer Sci	WB, IHC

## Stockage

**Stockage:**  
Stocker à -20 °C  
**Tampon de stockage:**  
PBS avec azoture de sodium à 0,02 % et glycérol à 50 % pH 7,3  
L'aliquotage n'est pas nécessaire pour le stockage à -20C

\*\*\* Les 20ul contiennent 0,1% de BSA.

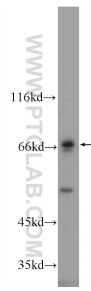
For technical support and original validation data for this product please contact:

T: 1 (888) 4PTGLAB (1-888-478-4522) (toll free in USA), or 1(312) 455-8498 (outside USA)

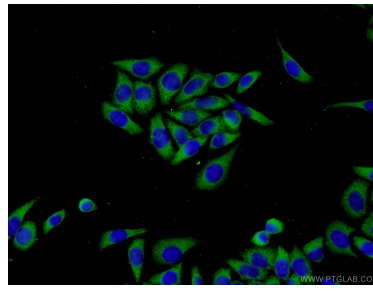
E: [proteintech@ptglab.com](mailto:proteintech@ptglab.com)  
W: [ptglab.com](http://ptglab.com)

This product is exclusively available under Proteintech Group brand and is not available to purchase from any other manufacturer.

## Données de validation sélectionnées



mouse liver tissue were subjected to SDS PAGE followed by western blot with 55289-1-AP (MMP21 Antibody) at dilution of 1:600 incubated at room temperature for 1.5 hours.



Immunofluorescent analysis of L02 cells using 55289-1-AP (MMP21 antibody) at dilution of 1:50 and Alexa Fluor 488-conjugated AffiniPure Goat Anti-Rabbit IgG(H+L).