

À des fins de recherche uniquement

# Anticorps Polyclonal de lapin anti- CHRNA10



Numéro de catalogue: 55291-1-AP

## Informations de base

<b>Numéro de catalogue:</b> 55291-1-AP	<b>Numéro d'acquisition GenBank:</b> NM_020402	<b>Méthode de purification:</b> Purification par affinité contre l'antigène
<b>Taille:</b> 150ul, Concentration: 600 µg/ml by Nanodrop and 407 µg/ml by Bradford method using BSA as the standard;	<b>Identification du gène (NCBI):</b> 57053	<b>Dilutions recommandées:</b> WB 1:200-1:1000
<b>Hôte:</b> Lapin	<b>Nom complet:</b> cholinergic receptor, nicotinic, alpha 10	
<b>Isotype:</b> IgG	<b>MW calculé:</b> 50 kDa	
	<b>MW observés:</b> 50-52 kDa	

## Applications

<b>Applications testées:</b> WB, ELISA	<b>Contrôles positifs:</b> WB : cellules Raji, cellules Jurkat
<b>Spécificité de l'espèce:</b> Humain, rat, souris	

## Informations générales

CHRNA10, also named as NACHRA10, belongs to the ligand-gated ion channel (TC 1.A.9) family, Acetylcholine receptor (TC 1.A.9.1) subfamily and Alpha-10/CHRNA10 sub-subfamily. It is an ionotropic receptor with a probable role in the modulation of auditory stimuli. In the ear, CHRNA10 may lead to a reduction in basilar membrane motion, altering the activity of auditory nerve fibers and reducing the range of dynamic hearing. It may protect against acoustic trauma. This antibody is specific to CHRNA10.

## Stockage

**Stockage:**  
Stocker à -20 °C.  
**Tampon de stockage:**  
PBS avec azoture de sodium à 0,02 % et glycérol à 50 % pH 7,3  
L'aliquotage n'est pas nécessaire pour le stockage à -20C

**\*\*\* Les 20ul contiennent 0,1% de BSA.**

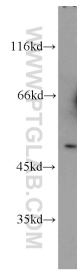
For technical support and original validation data for this product please contact:

T: 1 (888) 4PTGLAB (1-888-478-4522) (toll free in USA), or 1(312) 455-8498 (outside USA)

E: [proteintech@ptglab.com](mailto:proteintech@ptglab.com)  
W: [ptglab.com](http://ptglab.com)

This product is exclusively available under Proteintech Group brand and is not available to purchase from any other manufacturer.

## Données de validation sélectionnées



Raji cells were subjected to SDS PAGE followed by western blot with 55291-1-AP (CHRNA10 antibody) at dilution of 1:300 incubated at room temperature for 1.5 hours.